



## Dark Sky Ordinance

*Fairview is dedicated to preserving the idyllic natural setting of this region. In 2006, we adopted a series of restrictions and guidelines designed to limit glare, reduce unnecessary light and control other light pollution. Our Dark Sky Ordinance helps to ensure adequate lighting only where it is needed in order to reduce spillover light between properties, increase safety for travelers and increase aesthetic value for our town. Our residents are able to take full advantage of a starry sky surrounded by plenty of nature, an experience unique to other cities in the DFW area.*

---

**Purpose and Intent:** To regulate the installation and use of outdoor lighting fixtures in the town. This will improve night-time public safety, utility and security by restricting the night-time emission of light rays. These emissions are sources of light that trespass and cause unnecessary glare which are detrimental to the safety and security of persons, property and vehicular traffic.

---

**Below is a compressed checklist for District 1 to act as an aid in compliance and not to replace or severe any of the requirements of Chapter 3 Building Regulations, Article 5 of the Commercial Plan Development District (CPDD) Standards and Guidelines, hereon referred to as the CPDD Security and Guidelines:**

- Lighting glare from any lighting source will not be directly visible from public view or from a residential unit and a maximum average of 1-foot candle at residential property lines has not been exceeded
- All fixtures are full cutoff. Any proposed fixtures not meeting the full cutoff requirement must be approved by minor warrant. All outdoor lighting fixtures approved by minor warrant shall not exceed 20,000 lumens per developed acre
- Lighting levels conform with standards established in Article 3.14 of the Town of Fairview Code of Ordinances and Article 5 of the CPDD Standards and Guidelines
- Lighting elements do not include flood, cobra head (unless LED), HID - mercury vapor and sodium vapor, high pressure sodium and fluorescent lights (except fluorescent bulbs that screw into standard socket fixtures)

**Below is a compressed checklist for District 2 to act as an aid in compliance and not to replace or severe any of the requirements of Chapter 3 Building Regulations, Article 3.14 of the Town of Fairview Code of Ordinances:**

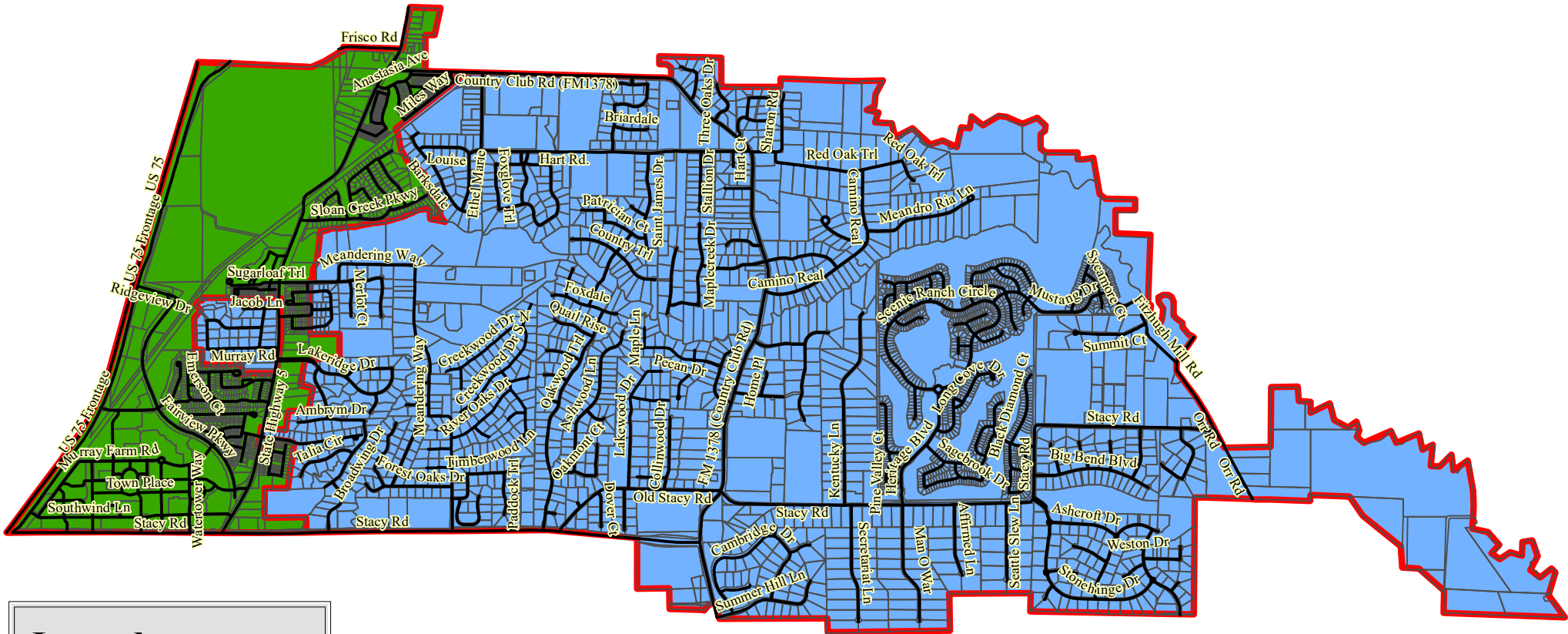
- All outdoor lighting fixtures have been designed, located, installed, aimed downward or towards structures, retro fitted if necessary, and maintained in order to prevent glare, light trespass, and light pollution
- Light trespass at property lines does not exceed the maximum of 0.20-foot candles
- Light fixtures conform with shielding requirements applicable to fully shielded, partially shielded, and unshielded
- Lighting levels conform with standards established in Article 3.14 of the Town of Fairview Code of Ordinances
- All lamp types for new security lights are LED, metal halide, high-pressure sodium or low-pressure sodium. Security lights intended to illuminate a perimeter (such as a fence line) shall include motion sensors and be designed to be off unless triggered by an intruder located within five feet of the perimeter. The zone of activation sensors must be within the property boundaries of the property wishing to be illuminated.
- A maximum limit of 50,000 lumens per developed acre for all lighting irrespective of shielding conditions has not been exceeded. Unshielded and partially shielded lighting are limited to a maximum of 10,000 lumens per developed acre
- All floodlighting, that is not motion activated, is full cutoff or permanently directed downward
- Upward lighting is used in the form of one narrow cone spotlight for flags, statues, public art or other objects of interest that cannot be illuminated with down-lighting
- Accent lighting may shine upward if the light is contained by the structure and the lamps are low intensity

**OUTDOOR LIGHTING STANDARDS ARE DIFFERENT FOR DISTRICT 1 AND 2, BE SURE AND CHECK WHICH STANDARDS APPLY TO YOUR DEVELOPMENT.**

Thank you for helping Fairview maintain its beauty at night as well as the daytime country living that we have all come to enjoy.



# Town of Fairview Lighting Districts



**Legend**

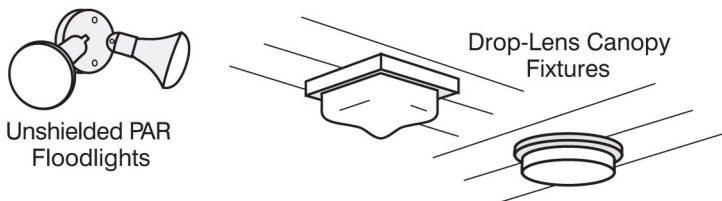
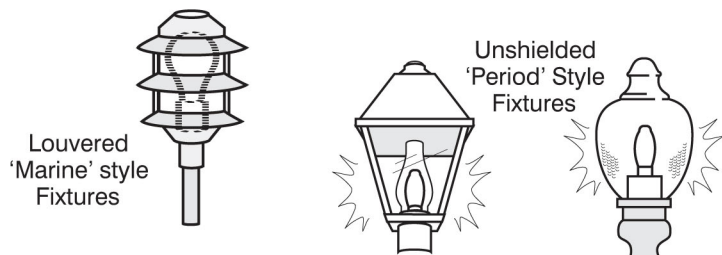
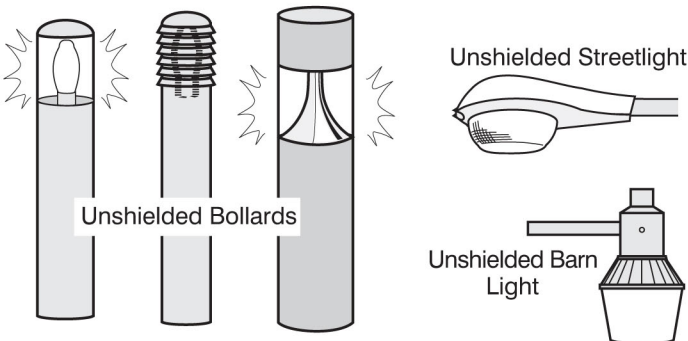
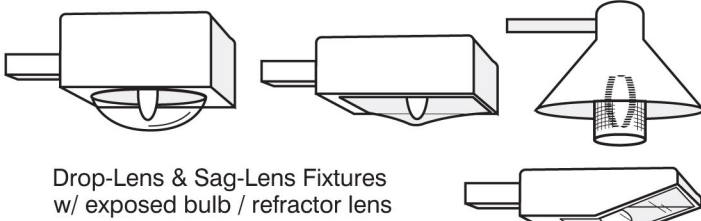
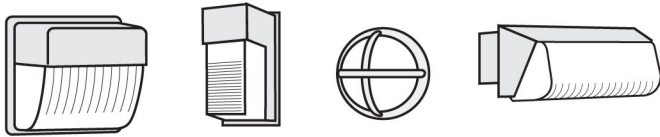
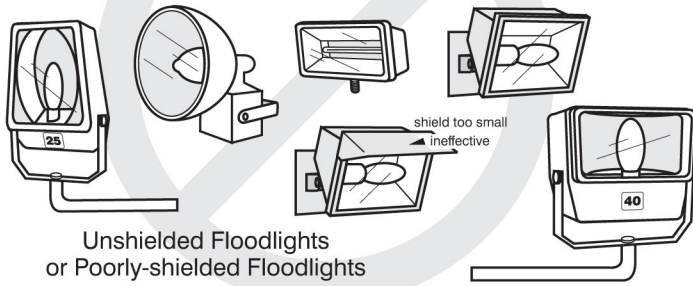
- Streets
- Fairview Parcels
- District 1
- District 2



# Examples of Acceptable / Unacceptable Lighting Fixtures

## Unacceptable / Discouraged

Fixtures that produce glare and light trespass



## Acceptable

Fixtures that shield the light source to minimize glare and light trespass and to facilitate better vision at night

