

# MONTHLY FINANCIAL REPORT

For the period ending January 31, 2016  
(Unaudited)

**TO:** Town Manager's Office  
**FROM:** Jason B. Weeks, Chief Financial Officer  
**DATE:** February 17, 2016

## BACKGROUND

Financial reports are prepared for the General Fund, Water and Wastewater Fund, Solid Waste Fund, Debt Service Fund, Stormwater Fund, and Fairview EDC & CDC Funds. Summaries of revenues and expenditures for the current year as well as previous year, and percentage of collected/used are presented. This report covers the fourth month of fiscal year 2015-2016; therefore, it is generally desirable for year-to-date revenue totals to have achieved 33% of the budgeted amount and expenditures should generally not exceed 33% of the budgeted amounts. However, because property taxes are primarily received during the first trimester of the budget year and other revenues such as franchise fees are cyclical, revenues will not always equate to the projected percentage. Likewise, total expenditures may not always equate to the projected percentage, because payments for contracted services, insurance, and debt service payments are paid in lump sum amounts, while transfers to other funds occur quarterly.

## GENERAL FUND

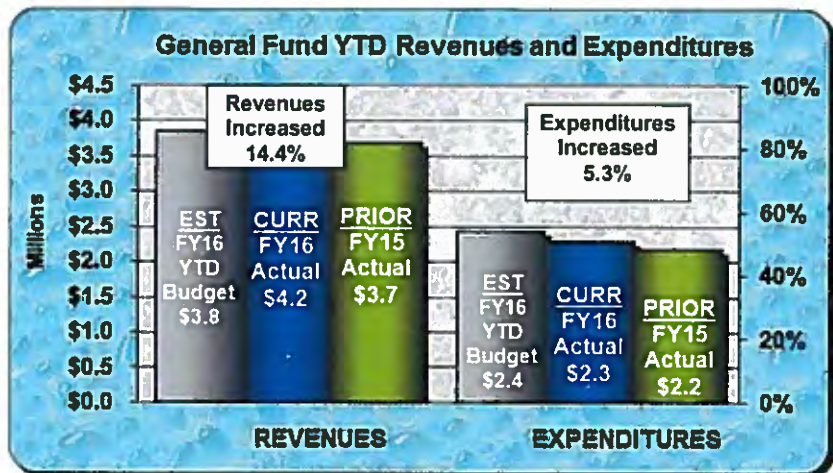
Revenue collections in the General Fund for the fourth month of fiscal year 2016 total \$4,228,823 and represent 54.9% of the total annual budget. Actual total collection this year is \$532,924 higher than last year.

The top revenue category that is higher than last year include: Property Taxes is the top revenue category that was higher than last year with a total of \$2,587,215, which is \$310,895 higher than last year due to the 8% increase in assessed valuations.

Transfers from other funds were higher than last year with by \$635,000, which are related to the funds set aside at the end of the previous fiscal year in the Capital Projects Fund. The Town has transferred these funds back to the General Fund for capital and one-time expenditures budgeted in the current fiscal year.

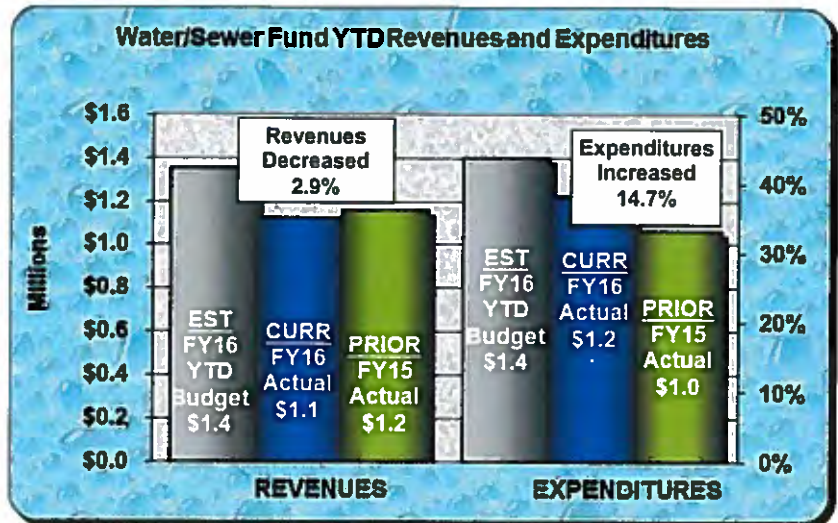
The top revenue categories that is lower than last year include: Miscellaneous, with a total of \$45,570, which is \$394,611 lower than last year due the Town receiving \$380,000 debt proceeds in the previous fiscal year to purchase EMS vehicles and equipment.

General Fund expenditures total \$2,287,557 and represent 29.7% of the total annual budget. Expenditures are \$114,967 higher than the previous year. Expenditures for all divisions are within the acceptable range. The Town transferred \$160,490 to the Technology Fund, which is \$64,101 higher than the previous fiscal year due to added budgeted technology expenditures this fiscal year.



## WATER AND SEWER FUND

The Water and Sewer Fund revenues total \$1,123,271 and represent 20.7% of the total annual budget. This amount is \$33,534 lower than last year. Water sales in November were higher by \$18,214 than the previous, while Miscellaneous revenue was higher by \$21,523 than previous year due a higher refund from North Texas Municipal Water District on over-payment for billed water. Due to timing of the transfer from the Debt Service Fund, a decrease of \$57,357 occurs in the transfer category when compared to the prior fiscal year.



Expenses for the Water and Sewer Fund total \$1,222,753 and represent 19.1% of the original annual budget. This amount is \$156,411 higher than last year. An increase of \$93,412 occurred due to the increase in water purchase rates and sewer treatment rates established by North Texas Municipal Water District. Due to the timing of the transfer to the General Fund, an increase of \$31,000 occurs in the Transfer category when compared to the prior fiscal year.

## OTHER OPERATING FUNDS

The increased expenditures in the Fairview EDC and Fairview CDC funds of \$174,489 and \$160,240 respectively are primarily due to reduced payments this fiscal year on the 380 Agreement with the Villages of Fairview. The revenues and expenditures for all the other operating funds are within an acceptable percentage range. Revenues and expenditures will be monitored and reported to ensure that spending will not exceed the approved budget amounts.

## OTHER INFORMATION

Number of water accounts in January 2016 totaled – 3,458

Number of sewer accounts in January 2016 totaled – 1,880

Number of solid waste accounts in January 2016 totaled – 3,537

Water sales in thousand gallons for the month of January 2016 – 23,273

## **SALES TAX ANALYSIS**

Sales tax revenue collections for the entire Town of Fairview (Town, Fairview EDC and Fairview CDC portions) for fourth month of fiscal year 2016 total \$968,811. Actual total collection this year is \$24,931 or 2.6% higher than last year.

The Town of Fairview received \$237,372 in sales tax revenue during the month of January 2016. This amount represents a decrease of \$2,161 or 0.9% more than January 2015. Due to the timing, the sales tax received in the month of February 2016 can be reported in this financial report too. The Town of Fairview received \$487,537 during the month of February 2016. This amount represents an increase of \$39,813 or 8.9% more than February 2015. The February 2016 payment represents the December 2015 quarter-end and month-end sales, which is representative of the "Christmas season". In addition, the amount received in February 2016 is the largest sales tax payment received in the history of Fairview.

## **MUNICIPAL COURT OUTSTANDING FINE & FEE COLLECTIONS**

The January 2016 report from Perdue, Brandon, Fielder, Collins & Mott, LLP:

- ✓ 152 Letters mailed
- ✓ 18 address corrections & 8 phone number changes
- ✓ 8 telephone contacts
- ✓ 90 new accounts were added (\$31,757)
- ✓ \$5,670 was collected on 21 outstanding accounts
- ✓ 4,559 accounts (\$1,560,280) outstanding at the end of January 2016
- ✓ REFERENCE "Docket Age Report Summary" within Financial packet
  - Total Dollar Amount Turned Over – amount of past due court fines and fees turned over to Perdue, Brandon, Fielder, Collins & Mott for collection
  - Total Dollar Amount Paid – total amount collected on past due account, which includes the Town's portion and the collection fee portion
  - Total Dollar Amount Non Cash – amount of past due court fines and fees turned over for collections that have been disposed of by sources other than cash collections (i.e. reduced fines, dismissals, etc.)

**TOWN OF FAIRVIEW  
COMBINED REVENUE & EXPENDITURE REPORT  
FOR THE PERIOD ENDING JANUARY 31, 2016**

	<u>Budget</u> FY15-16	<u>ESTIMAUED</u> YTD Budget* 1/31/2016	<u>CURRENT</u> YTD Actual 1/31/2016	YTD Used/ Collected 1/31/2016	<u>PRIOR</u> YTD Actual 1/31/2015	YTD Used/ Collected 1/31/2015	Changes from Last Year
<b>GENERAL FUND</b>							
<b>Revenues:</b>							
Property Taxes	\$3,208,619	\$2,459,964	\$2,587,215	80.6%	\$2,276,320	76.6%	\$310,895
Sales & Use Taxes	1,400,000	447,634	484,405	34.6%	471,940	33.7%	12,465
Mixed Beverage Tax	75,000	37,631	37,317	49.8%	37,712	50.3%	(395)
Franchises	649,500	197,781	36,853	5.7%	88,569	13.6%	(51,716)
Licenses & Permits	312,450	90,416	93,365	29.9%	73,747	20.7%	19,618
Charges for Service	273,000	268,795	61,122	22.4%	23,678	13.7%	37,444
Fines & Fees	403,750	129,896	94,194	23.3%	131,827	32.6%	(37,633)
Investment Income	15,000	5,590	8,757	58.4%	6,900	43.1%	1,857
Miscellaneous	155,106	62,118	45,570	29.4%	440,181	79.5%	(394,611)
Transfer from Capital Projects Fund	635,000	-	635,000	100.0%	-	0.0%	635,000
Transfer from Water & Sewer Fund	542,500	135,625	135,625	25.0%	135,625	25.0%	-
Transfer from Stormwater Fund	37,600	7,050	9,400	25.0%	9,400	25.0%	-
<b>Total Revenues</b>	<b>\$7,707,525</b>	<b>\$3,842,500</b>	<b>\$4,228,823</b>	<b>54.9%</b>	<b>\$3,695,899</b>	<b>51.5%</b>	<b>\$532,924</b>
<b>Expenditures:</b>							
Mayor & Council	\$19,250	\$6,390	\$2,837	14.7%	\$3,108	16.5%	(\$271)
Administration	586,933	190,794	157,205	26.8%	154,242	28.8%	2,963
Accounting	553,044	177,126	159,735	28.9%	148,003	28.9%	11,732
Town Secretary	104,560	26,466	25,436	24.3%	22,981	24.4%	2,455
Planning & Zoning	139,899	46,145	24,592	17.6%	40,781	31.0%	(16,189)
Police	1,948,214	647,857	564,943	29.0%	514,696	30.0%	50,247
Fire	2,553,793	830,070	880,792	34.5%	923,070	34.5%	(42,278)
Public Works	355,835	108,069	71,230	20.0%	54,214	23.0%	17,016
Inspections	110,761	36,005	32,659	29.5%	29,109	29.6%	3,550
Municipal Court	187,498	61,536	53,313	28.4%	53,117	31.4%	196
Parks & Recreation	87,663	28,900	32,172	36.7%	29,739	30.6%	2,433
Non-Departmental	896,573	236,456	122,153	13.6%	103,141	33.6%	19,012
Transfer to Capital Projects Fund	-	-	-	0.0%	-	0.0%	-
Transfer to Technology Fund	160,490	37,750	160,490	100.0%	96,389	94.1%	64,101
<b>Total Expenditures</b>	<b>\$7,704,513</b>	<b>\$2,433,564</b>	<b>\$2,287,557</b>	<b>29.7%</b>	<b>\$2,172,590</b>	<b>30.4%</b>	<b>\$114,967</b>
<b>Net Revenue over Expenditures</b>			<b>1,941,266</b>		<b>1,523,309</b>		
<b>Beginning Fund Balance</b>			<b>4,058,948</b>		<b>3,879,356</b>		
<b>Ending Fund Balance</b>			<b>6,000,214</b>		<b>5,402,665</b>		

\* YTD Budget is the average percentage of the past four years.

**TOWN OF FAIRVIEW  
COMBINED REVENUE & EXPENDITURE REPORT  
FOR THE PERIOD ENDING JANUARY 31, 2016**

	Budget FY15-16	ESTIMAUED YTD Budget* 1/31/2016	CURRENT YTD Actual 1/31/2016	YTD Used/ Collected 1/31/2016	PRIOR YTD Actual 1/31/2015	YTD Used/ Collected 1/31/2015	Changes from Last Year
<b>WATER &amp; SEWER FUND</b>							
<b>Revenues:</b>							
Water Service	\$3,500,000	\$852,772	\$758,595	21.7%	\$740,381	26.4%	\$18,214
Sewer Service	823,278	253,670	181,572	22.1%	189,695	28.3%	(8,123)
Tower Lease	196,430	65,412	53,233	27.1%	61,259	34.6%	(8,026)
Investment Income	250	94	300	120.0%	65	26.0%	235
Miscellaneous	158,102	89,308	124,571	78.8%	103,048	69.3%	21,523
Transfer from Debt Service Fund	722,692	90,336	-	0.0%	57,357	25.0%	(57,357)
Transfer from Stormwater Fund	20,000	2,500	5,000	25.0%	5,000	25.0%	-
<b>Total Revenues</b>	<b>\$5,420,752</b>	<b>\$1,354,093</b>	<b>\$1,123,271</b>	<b>20.7%</b>	<b>\$1,156,805</b>	<b>28.6%</b>	<b>(\$33,534)</b>
<b>Expenses:</b>							
Water Department	\$3,026,556	\$868,979	\$807,164	26.7%	\$705,544	25.9%	\$101,620
Utilities	191,642	54,910	60,989	31.8%	49,311	26.9%	11,678
Sewer Department	1,432,915	356,381	206,791	14.4%	161,585	11.6%	45,206
General Fund Franchise Fee	317,500	59,531	79,375	25.0%	79,375	25.0%	-
Transfer to General Fund	225,000	34,438	56,250	25.0%	25,250	11.2%	31,000
Transfer to Technology Fund	1,870	111	1,870	100.0%	-	0.0%	1,870
Non-Departmental	1,211,744	28,487	10,314	0.9%	45,277	4.0%	(34,963)
<b>Total Expenses</b>	<b>\$6,407,227</b>	<b>\$1,402,837</b>	<b>\$1,222,753</b>	<b>19.1%</b>	<b>\$1,066,342</b>	<b>17.8%</b>	<b>\$156,411</b>
<b>SOLID WASTE FUND</b>							
Total Revenues	\$653,800	\$44,718	\$180,953	27.7%	\$176,272	27.4%	\$4,681
Total Expenses	\$628,700	\$40,920	\$146,538	23.3%	\$144,613	24.8%	\$1,925
<b>DEBT SERVICE FUND</b>							
Total Revenues	\$2,147,729	\$1,407,870	\$1,609,969	75.0%	\$1,494,080	71.7%	\$115,889
Total Expenses	\$2,464,525	\$45,244	\$4,000	0.2%	\$61,734	3.1%	(\$57,734)
<b>STORMWATER FUND</b>							
Total Revenues	\$332,796	\$104,973	\$86,724	26.1%	\$85,353	28.5%	\$1,371
Total Expenses	\$303,834	\$64,868	\$88,016	29.0%	\$66,106	12.0%	\$21,910
<b>FAIRVIEW EDC</b>							
Total Revenues	\$700,350	\$220,555	\$242,715	34.7%	\$236,081	33.7%	\$6,634
Total Expenditures	\$719,809	\$218,241	\$232,332	32.3%	\$57,843	7.3%	\$174,489
<b>FAIRVIEW CDC</b>							
Total Revenues	\$706,350	\$222,191	\$242,725	34.4%	\$237,064	33.6%	\$5,661
Total Expenditures	\$706,168	\$235,910	\$218,218	30.9%	\$57,978	8.5%	\$160,240

\* YTD Budget is the average percentage of the past four years.

# Docket Age Report Summary

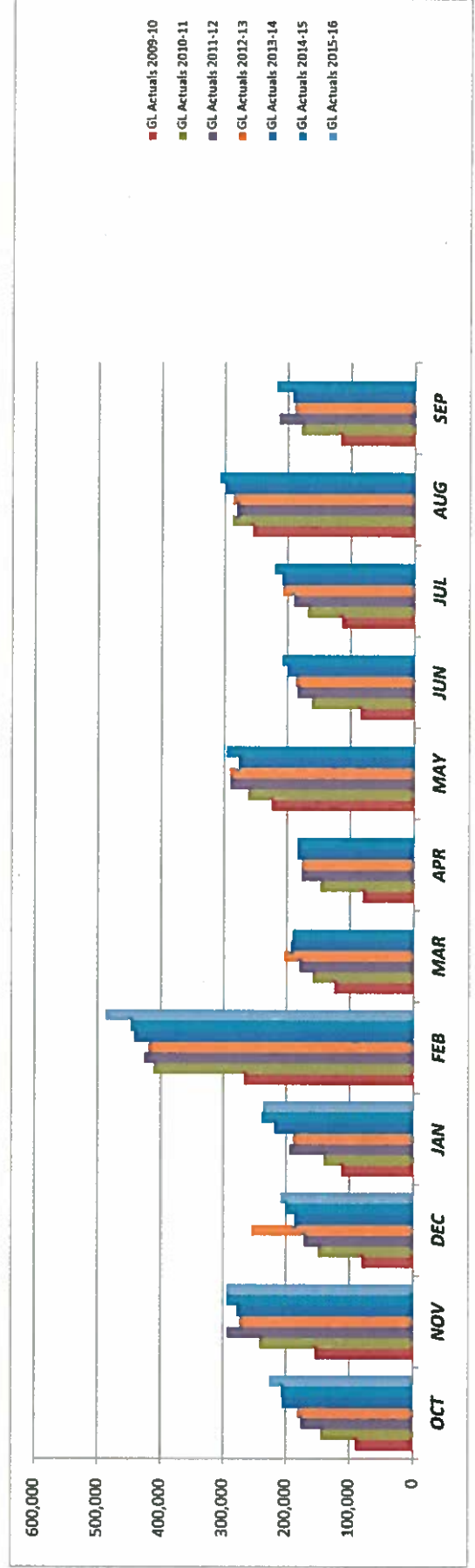
## For: Fairview City Fines And Fees

Year Of Offense	Offense Age In Years	Total Dollar Amount Turned Over	Total Dollar Amount Due	Total Dollar Amount Paid	Percent Paid	Total Dollar Amount Non Cash	Percent Non Cash	Total Dollar Amount Liquidated	Percent Liquidated
2015	1	\$222,107.46	\$202,001.19	\$15,092.25	6.80%	\$5,014.02	2.26%	\$20,106.27	9.05%
2014	2	\$262,271.08	\$178,210.48	\$57,652.35	21.98%	\$26,408.25	10.07%	\$84,060.60	32.05%
2013	3	\$168,080.36	\$135,405.41	\$22,714.54	13.51%	\$9,960.41	5.93%	\$32,674.95	19.44%
2012	4	\$140,364.18	\$118,267.78	\$16,690.81	11.89%	\$5,405.59	3.85%	\$22,096.40	15.74%
2011	5	\$143,366.79	\$116,448.58	\$22,102.81	15.42%	\$4,815.40	3.36%	\$26,918.21	18.78%
2010	6	\$193,648.35	\$167,222.47	\$14,935.87	7.71%	\$11,490.01	5.93%	\$26,425.88	13.65%
2009	7	\$113,850.70	\$100,051.60	\$10,563.80	9.28%	\$3,235.30	2.84%	\$13,799.10	12.12%
2008	8	\$179,315.50	\$156,486.60	\$10,296.70	5.74%	\$12,532.20	6.99%	\$22,828.90	12.73%
2007	9	\$112,820.81	\$99,520.65	\$9,967.51	8.83%	\$3,332.65	2.95%	\$13,300.16	11.79%
2006	10	\$101,307.05	\$95,852.25	\$3,201.45	3.16%	\$2,253.35	2.22%	\$5,454.80	5.38%
2005	11	\$127,595.61	\$122,742.01	\$2,173.60	1.70%	\$2,680.00	2.10%	\$4,853.60	3.80%
2004	12	\$68,165.11	\$59,253.10	\$3,645.00	5.35%	\$5,267.01	7.73%	\$8,912.01	13.07%
2003	13	\$6,905.60	\$6,905.60	\$0.00	0.00%	\$0.00	0.00%	\$0.00	0.00%
2002	14	\$1,490.20	\$1,490.20	\$0.00	0.00%	\$0.00	0.00%	\$0.00	0.00%
2001	15	\$362.25	\$362.25	\$0.00	0.00%	\$0.00	0.00%	\$0.00	0.00%
		\$1,841,651.05	\$1,560,220.17	\$189,036.69	10.26%	\$92,394.19	5.02%	\$281,430.88	15.28%

Town of Fairview  
**MONTHLY ACTUAL TOTALS - Sales Tax**  
 Current & Previous Year Comparison and Variance Analysis

Fiscal	HISTORICAL DATA												CURRENT FISCAL YEAR DATA				
	2008-09	2009-10	2010-11	2011-12	2012-13	2013-14	2014-15	2015-16	2015-16	2015-16	2015-16	2015-16	2015-16	2015-16	2015-16	2015-16	2015-16
	GL Actuals	GL Actuals	GL Actuals	GL Actuals	GL Actuals	GL Actuals	GL Actuals	GL Actuals	Variance	Variance %	Act16/Act15	Variance	Variance %	Act16/Act15	Variance	Variance %	Act16/Act15
OCT	44,176	89,622	144,634	176,236	182,274	206,397	207,714	227,044.25	19,330.73	97%	19,330.73	101%	101%	19,330.73	101%	101%	101%
NOV	66,135	154,330	242,466	293,730	274,682	278,331	294,830	294,899.15	69.58	126%	69.58	106%	106%	69.58	106%	106%	106%
DEC	46,867	80,805	149,830	171,561	255,516	186,361	201,803	209,495.17	7,691.69	90%	7,691.69	108%	108%	7,691.69	108%	108%	108%
JAN	38,306	113,062	141,004	195,205	190,100	219,267	239,533	237,372.18	(2,160.60)	102%	(2,160.60)	109%	109%	(2,160.60)	109%	109%	109%
FEB	73,258	267,143	411,537	425,768	419,733	442,581	447,724	487,536.75	39,812.98	209%	39,812.98	101%	101%	39,812.98	101%	101%	101%
MAR	79,499	124,856	159,365	179,558	204,454	192,849	190,576										
APR	55,317	79,764	146,718	177,017	177,293	183,889	183,441										
MAY	90,745	225,006	262,382	290,745	291,880	277,257	296,919										
JUN	76,520	84,888	161,430	184,353	187,635	200,325	207,986										
JUL	79,370	114,742	168,467	191,018	207,953	208,906	220,746										
AUG	107,738	255,586	288,290	280,682	287,558	299,768	308,568										
SEP	88,613	117,066	179,026	214,290	189,947	193,075	218,837										
<b>TOTALS</b>	<b>846,545</b>	<b>1,706,868</b>	<b>2,455,148</b>	<b>2,780,161</b>	<b>2,869,024</b>	<b>2,889,005</b>	<b>3,018,675</b>	<b>1,456,348</b>	<b>64,744</b>	<b>624%</b>	<b>64,744</b>	<b>525%</b>	<b>525%</b>	<b>64,744</b>	<b>525%</b>	<b>525%</b>	<b>525%</b>

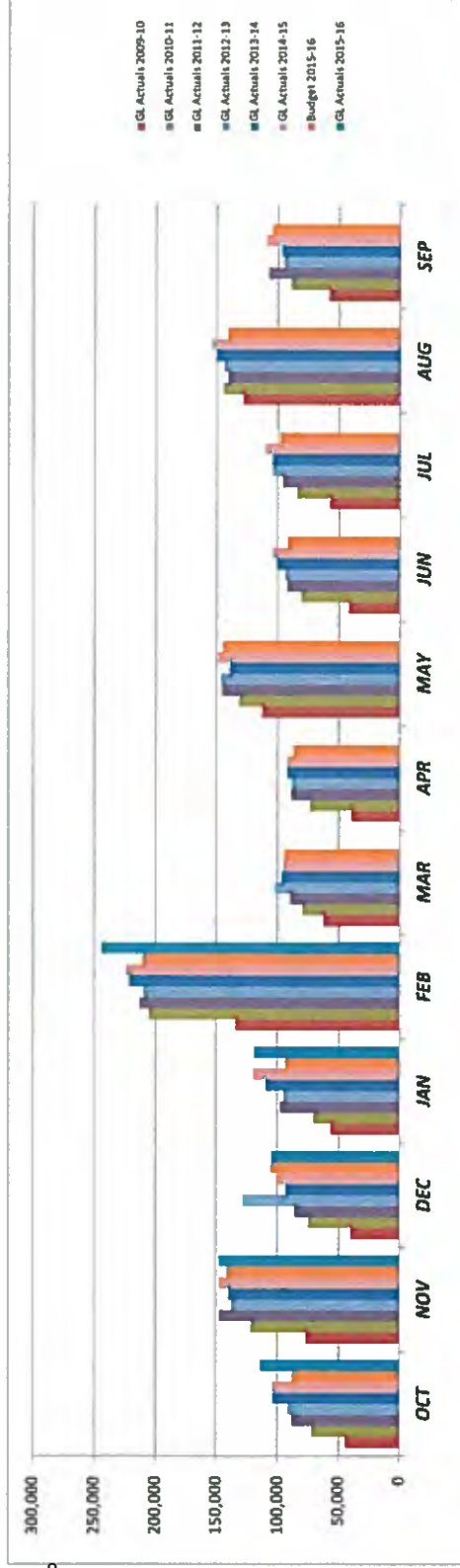
Monthly Sales Tax Collections



**Town of Fairview  
General Fund - Sales Tax  
Current & Previous Year Comparison and Variance Analysis**

Fiscal	CURRENT FISCAL YEAR DATA											
	GL Actuals 2009-10	GL Actuals 2010-11	GL Actuals 2011-12	GL Actuals 2012-13	GL Actuals 2013-14	GL Actuals 2014-15	Budget 2015-16	GL Actuals 2015-16	Variance Actual/Budg 2015-16	Variance % Actual/Budg 2015-16	Variance Curr to Prev 2015-16	Variance % Curr to Prev 2015-16
OCT	44,811	72,317	88,138	91,137	103,198	103,857	88,098	113,522.13	25,423.88	129%	9,665.37	109%
NOV	77,165	121,233	146,865	137,341	139,166	147,415	140,999	147,449.58	6,450.33	105%	34.79	100%
DEC	40,402	74,915	85,780	127,758	93,181	100,902	105,223	104,747.59	(475.66)	100%	3,845.85	104%
JAN	56,531	70,502	97,602	95,050	109,633	119,766	93,716	118,686.09	24,969.84	127%	(1,080.30)	99%
FEB	133,571	205,769	212,884	209,866	221,290	223,862	210,750	243,768.38	33,018.13	116%	19,906.49	109%
MAR	62,428	79,683	89,779	102,227	96,424	95,288	94,486					
APR	39,882	73,359	88,509	88,647	91,945	91,720	87,051					
MAY	112,503	131,191	145,372	145,940	138,628	148,459	144,541					
JUN	42,444	80,715	92,177	93,817	100,163	103,993	91,498					
JUL	57,371	84,233	95,509	103,977	104,453	110,373	98,266					
AUG	127,793	144,145	140,341	143,779	149,884	154,284	140,909					
SEP	58,533	89,513	107,145	94,973	96,537	109,419	104,460					
<b>TOTALS</b>	<b>853,434</b>	<b>1,227,574</b>	<b>1,390,081</b>	<b>1,434,512</b>	<b>1,444,502</b>	<b>1,509,337</b>	<b>1,400,000</b>	<b>728,174</b>	<b>89,387</b>	<b>575%</b>	<b>32,372</b>	<b>521%</b>

**Monthly Sales Tax Collections**

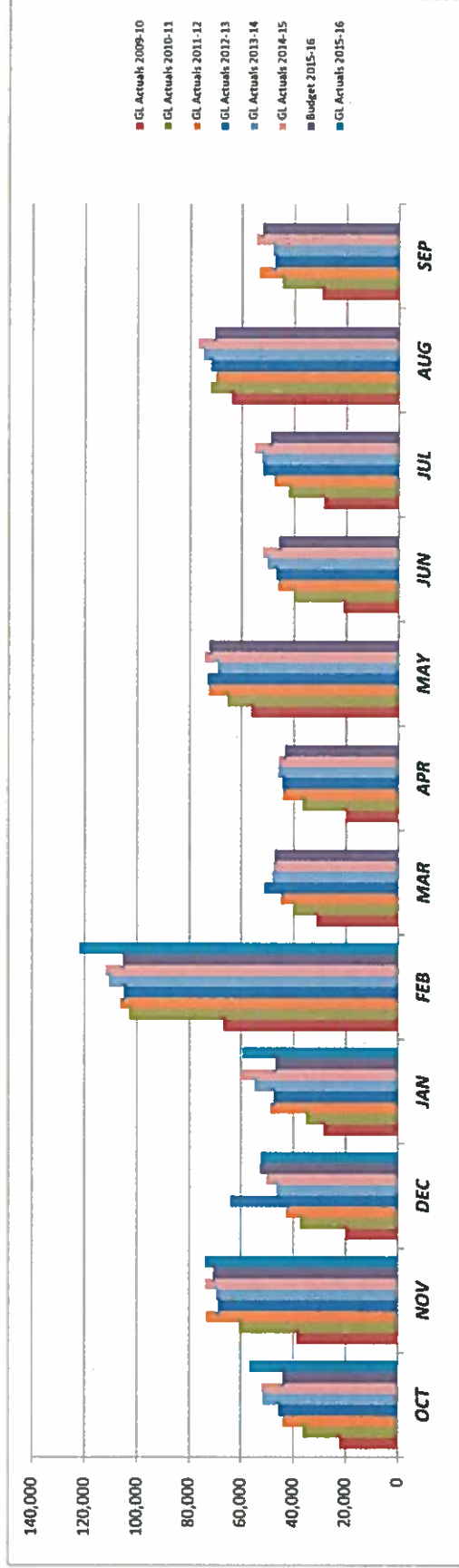




**Town of Fairview  
Economic Development Corporation Fund - Sales Tax  
Current & Previous Year Comparison and Variance Analysis**

Fiscal	CURRENT FISCAL YEAR DATA															
	2015-16						2014-15									
	GL Actuals	GL Actuals	GL Actuals	GL Actuals	GL Actuals	Budget	GL Actuals	GL Actuals	GL Actuals	GL Actuals	GL Actuals	Variance				
	2009-10	2010-11	2011-12	2012-13	2013-14	2014-15	2015-16	2015-16	2015-16	2015-16	2015-16	2015-16	2015-16	2015-16	Variance	Variance %
OCT	22,405	36,159	44,059	45,568	51,599	51,928	44,049	56,761.06	12,711.94	129%	4,832.68	109%				
NOV	38,583	60,617	73,433	68,670	69,583	73,707	70,500	73,724.79	3,225.16	105%	17.40	100%				
DEC	20,201	37,458	42,890	63,879	46,590	50,451	52,612	52,373.79	(237.83)	100%	1,922.92	104%				
JAN	28,265	35,251	48,801	47,525	54,817	59,883	46,858	59,343.05	12,484.92	127%	(540.15)	99%				
FEB	66,786	102,884	106,442	104,933	110,645	111,931	105,375	121,884.19	16,509.06	116%	9,953.25	109%				
MAR	31,214	39,841	44,889	51,114	48,212	47,644	47,243									
APR	19,941	36,679	44,254	44,323	45,972	45,860	43,526									
MAY	56,251	65,595	72,686	72,970	69,314	74,230	72,271									
JUN	21,222	40,357	46,088	46,909	50,081	51,997	45,749									
JUL	28,686	42,117	47,755	51,988	52,226	55,186	49,133									
AUG	63,896	72,072	70,170	71,890	74,942	77,142	70,455									
SEP	29,266	44,757	53,572	47,487	48,269	54,709	52,230									
<b>TOTALS</b>	<b>426,717</b>	<b>613,787</b>	<b>695,040</b>	<b>717,256</b>	<b>722,251</b>	<b>754,669</b>	<b>700,000</b>	<b>364,087</b>	<b>44,693</b>	<b>575%</b>	<b>16,186</b>	<b>521%</b>				

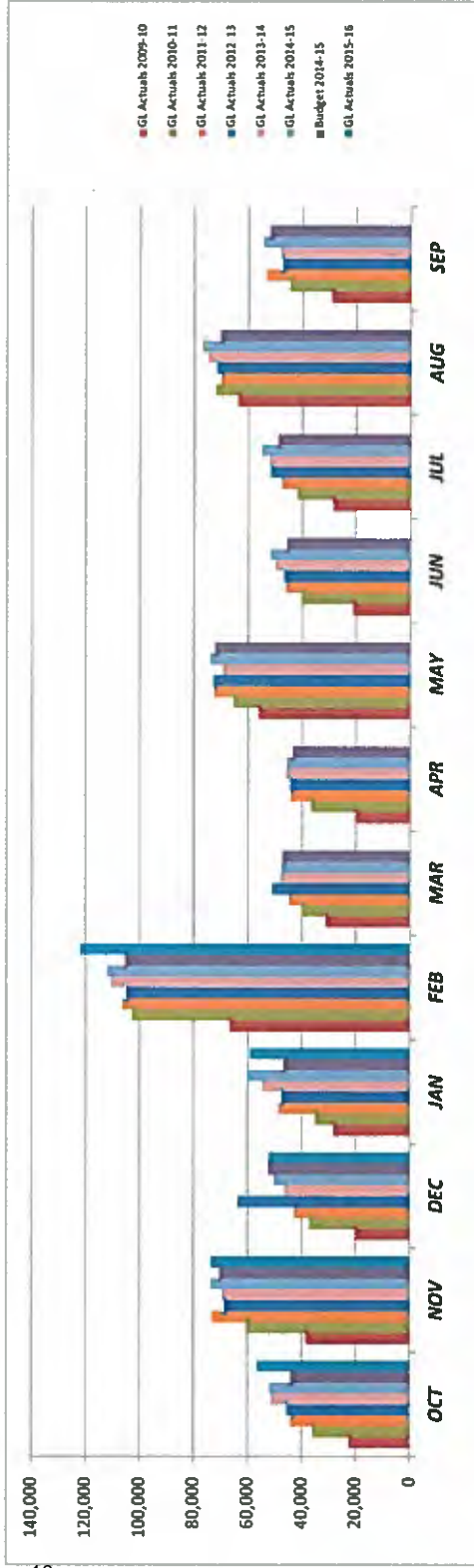
**Monthly Sales Tax Collections**



**Town of Fairview  
Community Development Corporation Fund - Sales Tax  
Current & Previous Year Comparison and Variance Analysis**

Fiscal	CURRENT FISCAL YEAR DATA															
	2009-10		2010-11		2011-12		2012-13		2013-14		2014-15		2015-16		2015-16	
	GL Actuals	Budget	GL Actuals	Budget	GL Actuals	Budget	GL Actuals	Budget	GL Actuals	Budget	GL Actuals	Budget	Actual/Budg	Variance	Actual/Budg	Variance
OCT	22,405	36,159	44,059	45,568	51,599	51,928	51,928	56,761.06	12,711.94	129%	4,832.68	109%				
NOV	38,583	60,617	73,433	68,670	69,583	73,707	73,707	73,724.79	3,225.16	105%	17.40	100%				
DEC	20,201	37,458	42,890	63,879	46,590	50,451	50,451	52,373.79	(237.83)	100%	1,922.92	104%				
JAN	28,265	35,251	48,801	47,525	54,817	59,883	59,883	59,343.05	12,484.92	127%	(540.15)	99%				
FEB	66,786	102,884	106,442	104,933	110,645	111,931	111,931	121,884.19	16,509.06	116%	9,953.25	109%				
MAR	31,214	39,841	44,889	51,114	48,212	47,644	47,644	47,243								
APR	19,941	36,679	44,254	44,323	45,972	45,860	45,860	43,526								
MAY	56,251	65,595	72,686	72,970	69,314	74,230	74,230	72,271								
JUN	21,222	40,357	46,088	46,909	50,081	51,997	51,997	45,749								
JUL	28,686	42,117	47,755	51,988	52,226	55,186	55,186	49,133								
AUG	63,896	72,072	70,170	71,890	74,942	77,142	77,142	70,455								
SEP	29,266	44,757	53,572	47,487	48,269	54,709	54,709	52,230								
<b>TOTALS</b>	<b>426,717</b>	<b>613,787</b>	<b>695,040</b>	<b>717,256</b>	<b>722,251</b>	<b>754,669</b>	<b>754,669</b>	<b>364,087</b>	<b>44,693</b>	<b>575%</b>	<b>16,186</b>	<b>521%</b>				

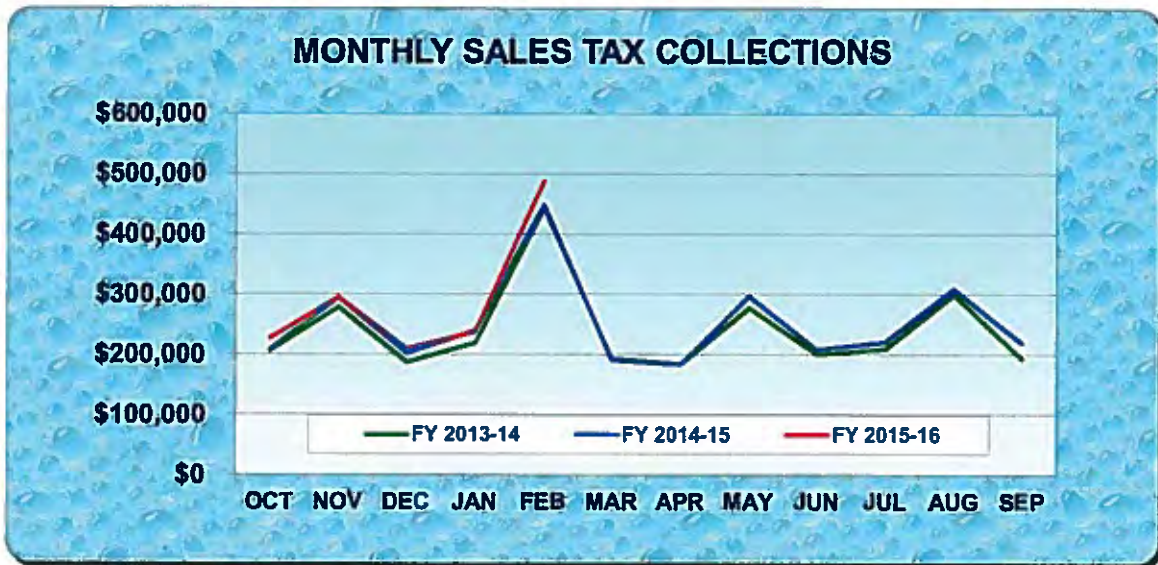
**Monthly Sales Tax Collections**



**Town of Fairview Sales Tax Summary--Cash Basis  
Fiscal Year 2015 - 2016  
(Actual versus Budget)**

MONTH	MONTHLY SALES TAX COMPARISON				YTD SALES \$ TAX COMPARISON			YTD % SALES TAX COMPARISON	
	MONTHLY BUDGET	MONTHLY RECEIVED	MONTH VARIANCE Fav / (Unfav)	MONTH % Fav / -Unfav	YTD BUDGET \$	YTD ACTUAL \$	YTD \$ Variance Fav / (Unfav)	YTD ACTUAL \$ RECEIVED As a % OF TOTAL ANNUAL BUDGET \$	YTD BUDGET \$ As a PERCENT of TOTAL ANNUAL BUDGET \$
October	\$176,197	\$227,044	\$50,848	28.9%	\$176,197	\$227,044	\$50,848	8.1%	6.3%
November	281,999	294,899	12,901	4.6%	458,195	521,943	63,748	18.6%	16.4%
December	210,447	209,495	(951)	-0.5%	668,642	731,439	62,797	26.1%	23.9%
January	187,433	237,372	49,940	26.6%	856,074	968,811	112,737	34.6%	30.6%
February	421,501	487,537	66,036	15.7%	1,277,575	1,456,348	178,773	52.0%	45.6%
March	188,973								
April	174,103								
May	289,083								
June	182,997								
July	196,533								
August	281,819								
September	208,921								
<b>Total</b>	<b>\$2,800,000</b>	<b>\$1,456,348</b>	<b>\$178,773</b>						

# TOWN OF FAIRVIEW



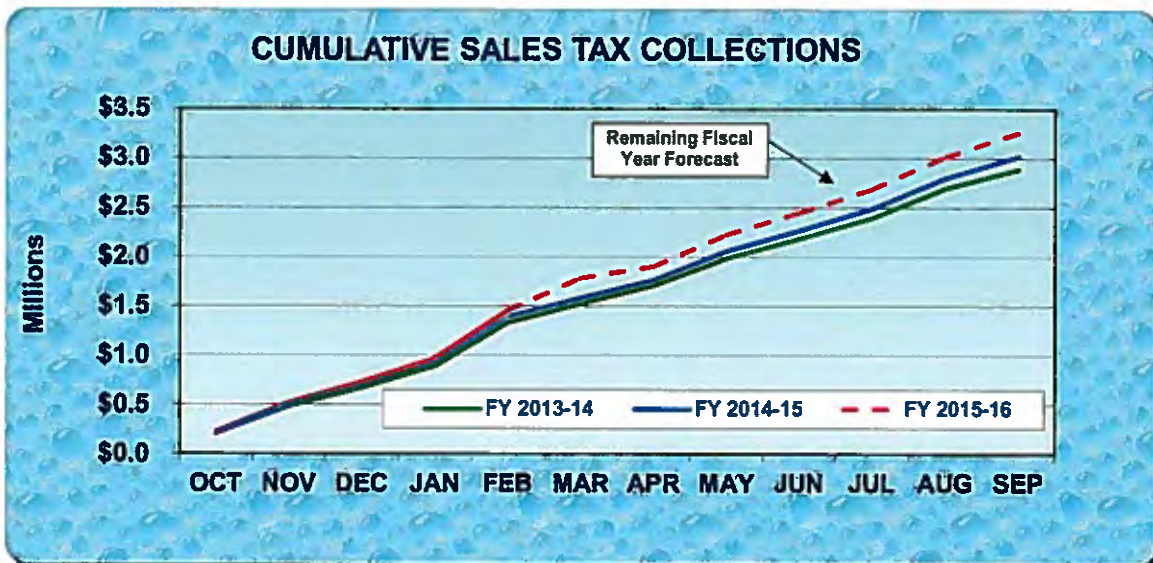
	FY 2013-14			FY 2014-15			FY 2015-16			FY 2015-16 Forecast **
	Monthly	Cumulative	% *	Monthly	Cumulative	% *	Monthly	Cumulative	% *	
OCTOBER	206,397	206,397	7.4%	207,714	207,714	7.4%	227,044	227,044	8.1%	3,299,606
NOVEMBER	278,331	484,728	17.3%	294,830	502,543	17.9%	294,899	521,943	18.6%	3,135,209
DECEMBER	186,361	671,089	24.0%	201,803	704,347	25.2%	209,495	731,439	26.1%	3,134,785
JANUARY	219,267	890,356	31.8%	239,533	943,879	33.7%	237,372	968,811	34.6%	3,098,409
FEBRUARY	442,581	1,332,936	47.6%	447,724	1,391,603	49.7%	487,537	1,456,348	52.0%	3,159,119
MARCH	192,849	1,525,785	54.5%	190,576	1,582,179	56.5%				
APRIL	183,889	1,709,674	61.1%	183,441	1,765,620	63.1%				
MAY	277,257	1,986,931	71.0%	296,919	2,062,539	73.7%				
JUNE	200,325	2,187,257	78.1%	207,986	2,270,525	81.1%				
JULY	208,906	2,396,162	85.6%	220,746	2,491,270	89.0%				
AUGUST	299,768	2,695,930	96.3%	308,568	2,799,838	100.0%				
SEPTEMBER	193,075	2,889,005	103.2%	218,837	3,018,675	107.8%				

\* % received compared to annual budget

\*\* Forecast Calculation:  $\left(\frac{\text{FY 15-16 Cumulative} - \text{FY 14-15 Cumulative}}{\text{FY 14-15 Cumulative}} + 1\right) * \text{FY 14-15 Final Cumulative}$

\*\*\* State Comptroller portion only

End-of-Year Amount	2,889,005		3,018,675		3,159,119	
Budgeted Amount	2,800,000		2,800,000		2,800,000	
Variance from Budget	89,005	3.2%	218,675	7.8%	359,119	12.8%



## TOWN OF FAIRVIEW Analysis of Sales (Spending) per Capita

<u>Fiscal Year</u>	<u>Sales Tax EDC-CDC-Town</u>	<u>Total Sales (Spending)</u>	<u>Population</u>	<u>Sales (Spending) per Capita</u>
2003-04	138,975	694,874	7,000	99
2004-05	300,838	1,504,192	7,000	215
2005-06	448,806	2,244,030	7,000	321
2006-07	514,902	2,574,512	7,000	368
2007-08	564,641	2,823,204	7,032	401
2008-09	846,545	4,232,723	7,139	593
2009-10	1,706,868	8,534,340	7,248	1,177
2010-11	2,455,148	12,275,741	7,611	1,613
2011-12	2,780,161	13,900,805	7,914	1,756
2012-13	2,869,024	14,345,120	8,020	1,789
2013-14	2,889,005	14,445,025	8,310	1,801
2014-15	3,018,675	15,093,375	8,500	1,816
2015-16	3,159,119	15,795,594	8,800	1,795

*For 2015-16, the amount is forecasted based upon prior year trends*

