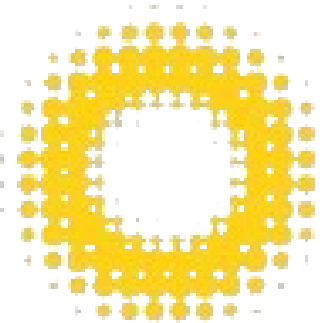


MCKINNEY TEXAS TEMPLE
Site Lighting Plan

JANUARY 18, 2025

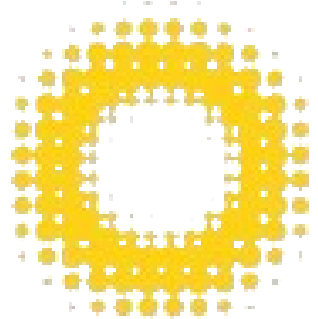
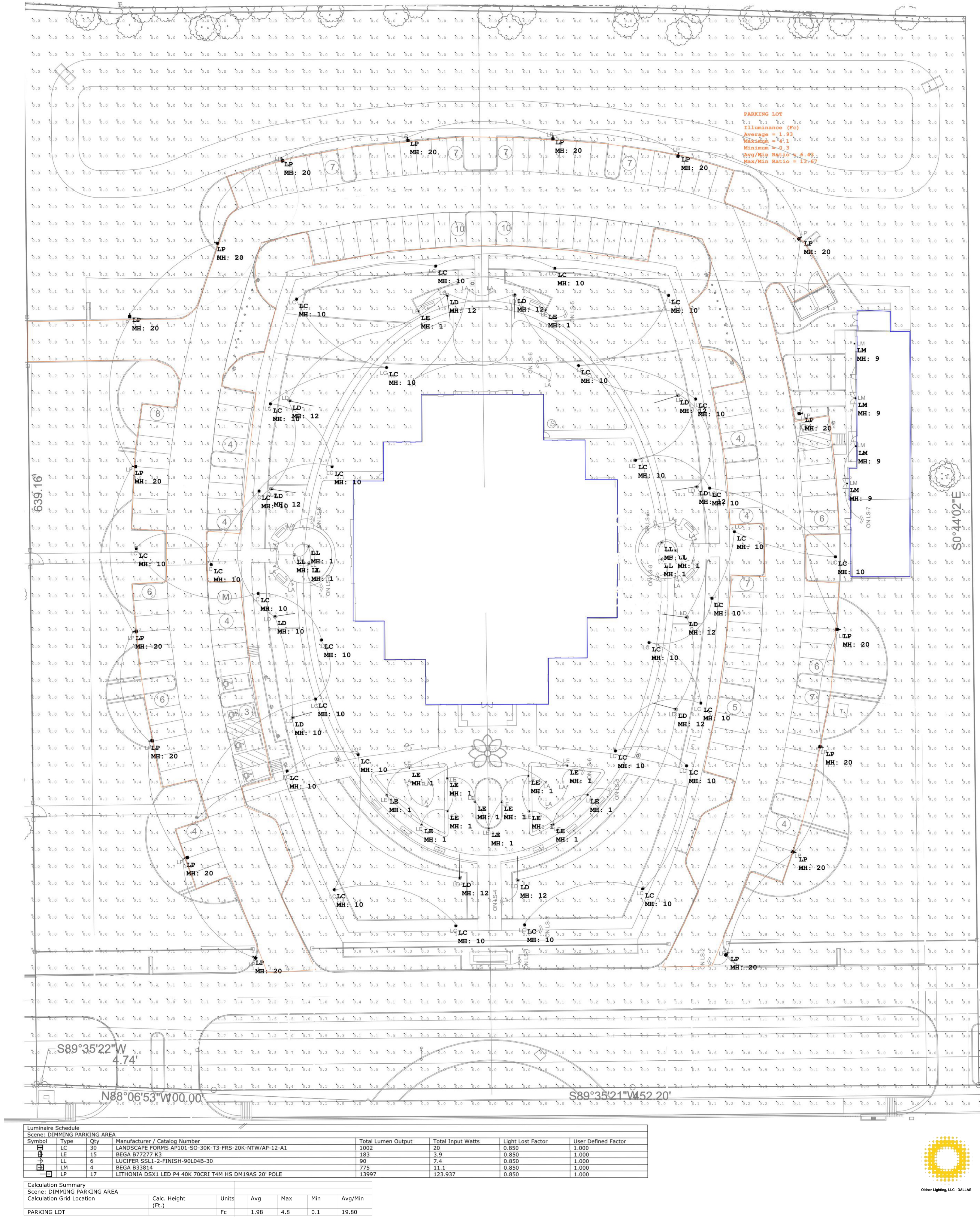


REES

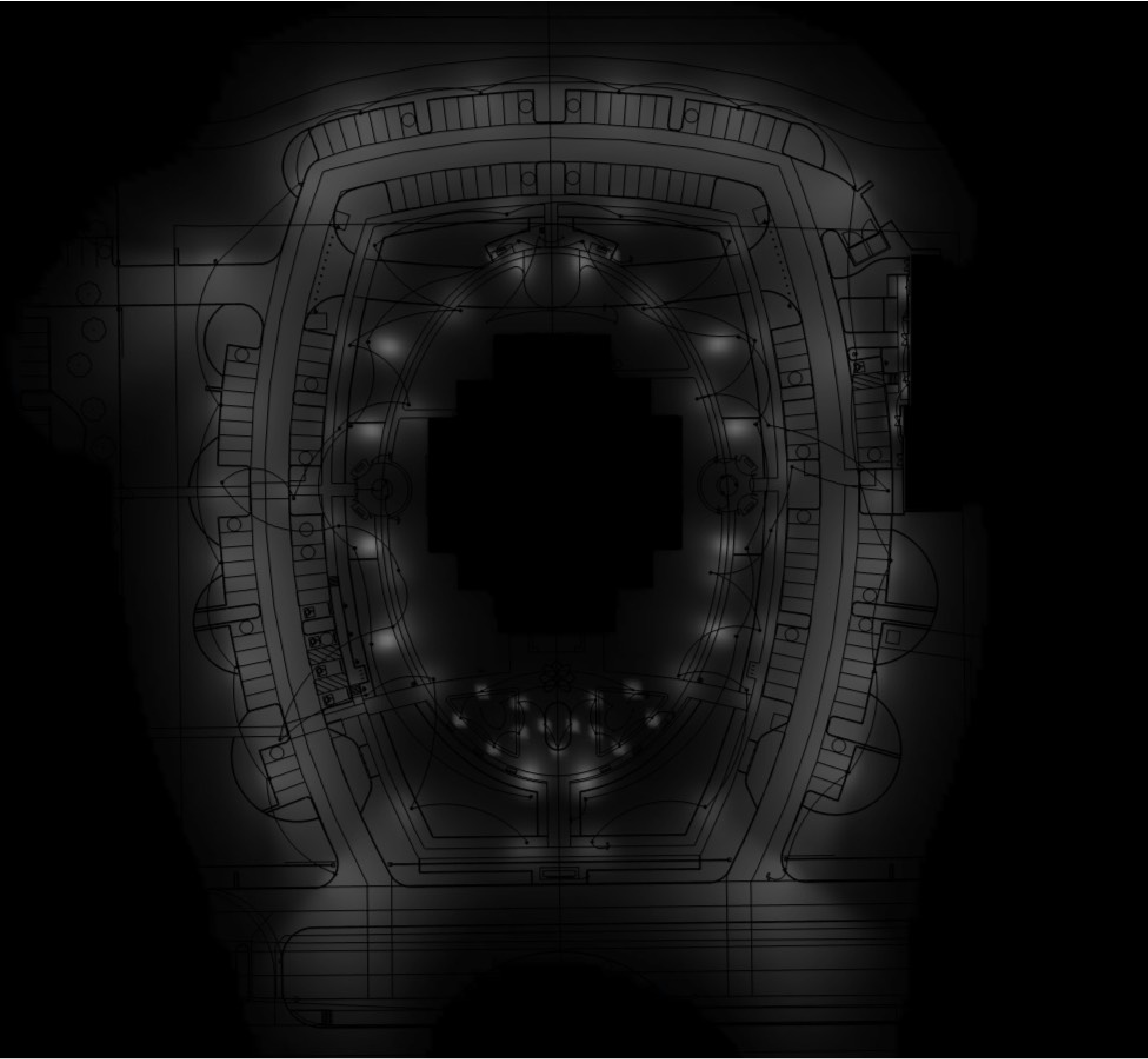
MCKINNEY TEXAS TEMPLE

Site Lighting Photometric Plan - Calculation

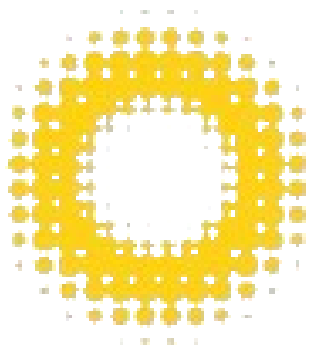
JANUARY 18, 2025



REES



Luminaire Schedule						
Scene: DIMMING PARKING AREA						
Symbol	Type	Qty	Manufacturer / Catalog Number	Total Lumen Output	Total Input Watts	User Defined Factor
LC	LC	30	LANDSCAPE FORMS AP101-SO-3DK-T3-FRS-20K-NTW/AP-12-A1	1002	20	0.850
LE	LE	15	BEGA B72277-K3	183	3.9	0.850
LL	LL	6	LUCIFER SSL1-2-FINISH-90L04B-30	90	7.4	0.850
LM	LM	4	BEGA B33814	775	11.1	0.850
LP	LP	17	LITHONIA DSX1 LED P4 40K 70CRI T4M HS DM19AS 20' POLE	13997	123.937	0.850
Calculation Summary						
Scene: DIMMING PARKING AREA						
Calculation Grid Location			Calc. Height (Ft.)	Units	Avg	Max
PARKING LOT				Fc	1.98	4.8
					0.1	19.80

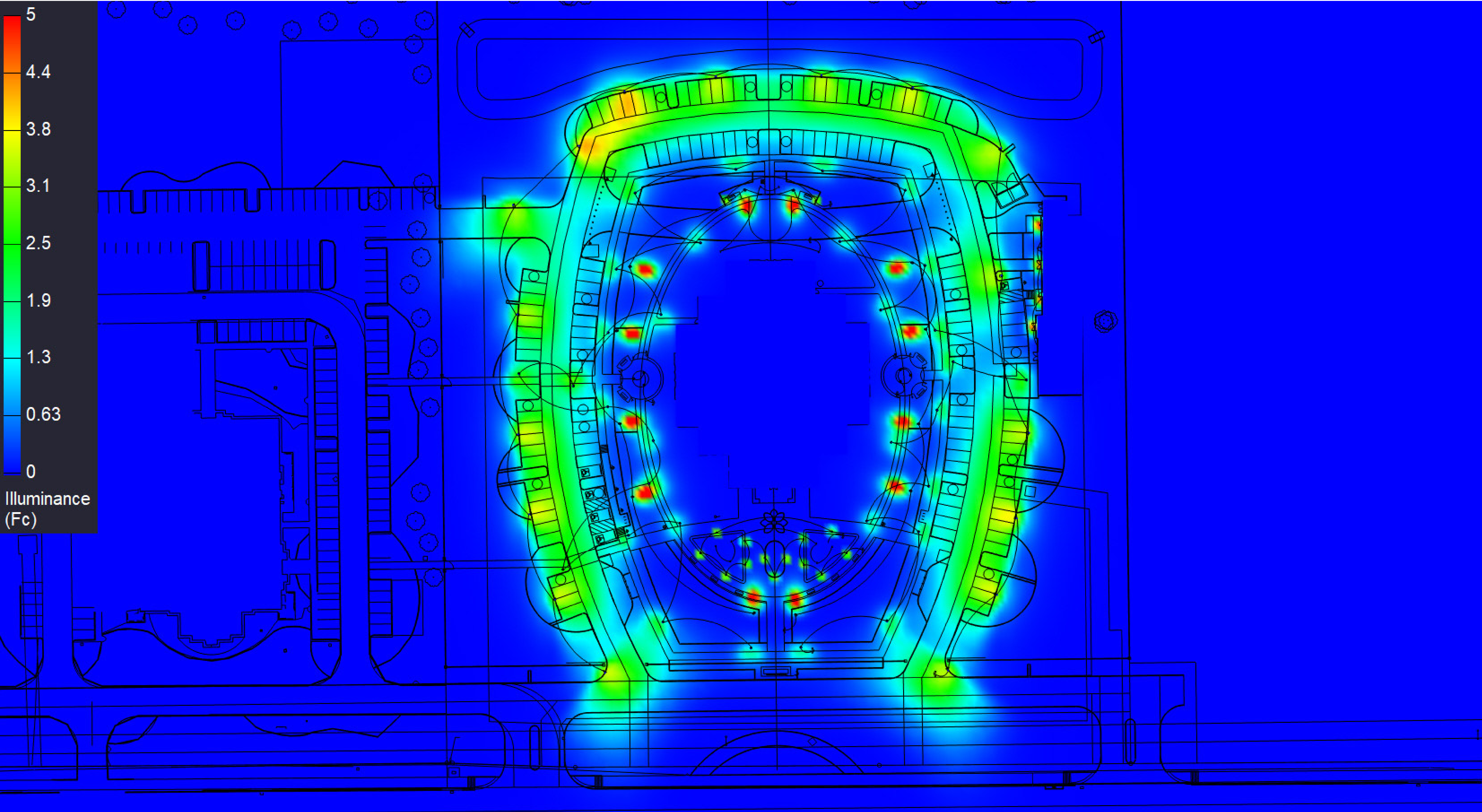


REES

MCKINNEY TEXAS TEMPLE

Site Lighting Photometric Plan - Rendering

JANUARY 18, 2025

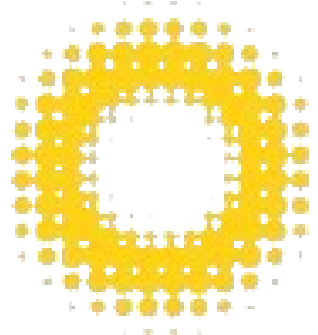


Luminaire Schedule									
Scene: DIMMING PARKING AREA									
Symbol	Type	Qty	Manufacturer / Catalog Number			Total Lumen Output	Total Input Watts	Light Lost Factor	User Defined Factor
LC	LC	30	LANDSCAPE FORMS AP101-SO-30K-T3-FRS-20K-NTW/AP-12-A1			1002	20	0.850	1.000
LE	LE	15	BEGA B72272 K3			183	3.9	0.850	1.000
LL	LL	6	LUCIFER SSL1-2-FINISH-90L04B-30			90	2.4	0.850	1.000
LM	LM	4	BEGA B33814			775	11.1	0.850	1.000
LP	LP	17	LITHONIA DSX1 LED P4 40K 70CRI T4M HS DM19AS 20' POLE			13997	123.937	0.850	1.000

Calculation Summary						
Scene: DIMMING PARKING AREA						
Calculation Grid Location						
PARKING LOT	Calc. Height (ft.)	Units	Avg	Max	Min	Avg/Min
		Fc	1.98	4.8	0.1	19.80




MCKINNEY TEXAS TEMPLE
Site Lighting Photometric Plan - Pseudo Rendering
JANUARY 18, 2025



REES

Type LB: 20' Area/Parking Post-Top Luminaire
*(fixture is full cutoff & is Dark Sky Compliant)



D-Series Size 1
LED Area Luminaire

d'series

Specifications

EPA: 0.69 ft² (0.06 m²)

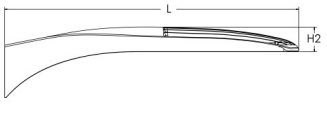
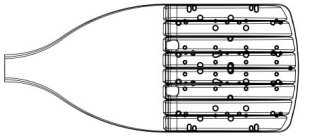
Length: 32.71" (831 mm)

Width: 14.26" (362 mm)

Height H1: 7.88" (200 mm)

Height H2: 2.73" (69 mm)

Weight: 34 lbs (15 kg)



Ordering Information

DSX1 LED
McKinney Temple
LP

Introduction

The modern styling of the D-Series features a highly refined aesthetic that blends seamlessly with its environment. The D-Series offers the benefits of the latest in LED technology into a high performance, high efficacy, long-life luminaire.

The photometric performance results in sites with excellent uniformity, greater pole spacing and lower power density. D-Series outstanding photometry aids in reducing the number of poles required in area lighting applications with typical energy savings of 65% and expected

Type LB: DSX1 LED-P2-40K-70CRI-T4M-MVOLT-RPA-?-?-DBLXD / DSXRPA-DBLXD / DM19AS / RTS-20-5-9B-DM19AS-?-DBLXD

Ordering Information				EXAMPLE: DSX1 LED P7 40K 70CRI T3M MVOLT SPA NLTAR2 PIRHN DBBXD				
DSX1 LED		40K	70CRI	T5M(sxa) / T4M(sxb)		MVOLT	RPA	
Series	LEDs	Color temperature ¹	Color Rendering Index ²	Distribution		Voltage	Mounting	
DSX1 LED	Forward optics (this section 70CRI only)		70CRI	A/R		MVOLT (120V-277V) ¹⁴ RVOLT (240V-480V) ¹⁴ XVOLT (277V-480V) ¹⁴	Shipped included SPA Square pole mounting (90° drilling) RPA Round pole mounting (90° drilling) SPRS Square pole mounting (90° drilling) RPMS Round pole mounting (90° drilling) WBA Wall bracket ¹⁵ WA Wall arm adapter (mounts on 2.0" OD horizontal fence)	
	P1	P6	30K	3000K	T5M	Type I medium		
	P2	P7	40K	4000K	T5L6	Type I low glare		
	P3	P8	50K	5000K	T5M	Type I medium		
	P4	P9	(this section B/CRI only, extended lead times apply)		T5L6	Type II low glare ¹⁶		
Related optics	P3P	P12	27K	2700K	B/CRI	Type II medium	B/CRI B/CRI B/CRI B/CRI B/CRI	
	P5	P13	35K	3500K	B/CRI	Type II low glare ¹⁶		
	P11	P13	40K	4000K	B/CRI	Type II low glare ¹⁶		
			50K	5000K	B/CRI	Type II low glare ¹⁶		
					B/CRI	Type II low glare ¹⁶		
PIR				T.B.D.		DBLXD		
Control options				Other options		Finish required		
Shipped installed NLTAR2 PIRHN				Shipped installed SPR20VY 200V surge protection SPR20VY 200V surge protection SPR20VY 200V surge protection SPR20VY 200V surge protection SPR20VY 200V surge protection		Shipped installed DBBXD Dark Bronze DBLXD Black DM19D Natural Aluminum DM19D White DBBXD Textured dark bronze DBLXD Textured black DM19D Textured natural aluminum DM19D Textured white		
PIR				PIR2 Seven pole mounts only (controls ordered separately) ^{17,18}		PIR2 Seven pole mounts only (controls ordered separately) ^{17,18}		
PIR				PIR2 Seven pole mounts only (controls ordered separately) ^{17,18}		PIR2 Seven pole mounts only (controls ordered separately) ^{17,18}		
PIR				PIR2 Seven pole mounts only (controls ordered separately) ^{17,18}		PIR2 Seven pole mounts only (controls ordered separately) ^{17,18}		
PIR				PIR2 Seven pole mounts only (controls ordered separately) ^{17,18}		PIR2 Seven pole mounts only (controls ordered separately) ^{17,18}		
PIR				PIR2 Seven pole mounts only (controls ordered separately) ^{17,18}		PIR2 Seven pole mounts only (controls ordered separately) ^{17,18}		
PIR				PIR2 Seven pole mounts only (controls ordered separately) ^{17,18}		PIR2 Seven pole mounts only (controls ordered separately) ^{17,18}		
PIR				PIR2 Seven pole mounts only (controls ordered separately) ^{17,18}		PIR2 Seven pole mounts only (controls ordered separately) ^{17,18}		
PIR				PIR2 Seven pole mounts only (controls ordered separately) ^{17,18}		PIR2 Seven pole mounts only (controls ordered separately) ^{17,18}		
PIR				PIR2 Seven pole mounts only (controls ordered separately) ^{17,18}		PIR2 Seven pole mounts only (controls ordered separately) ^{17,18}		
PIR				PIR2 Seven pole mounts only (controls ordered separately) ^{17,18}		PIR2 Seven pole mounts only (controls ordered separately) ^{17,18}		
PIR				PIR2 Seven pole mounts only (controls ordered separately) ^{17,18}		PIR2 Seven pole mounts only (controls ordered separately) ^{17,18}		
PIR				PIR2 Seven pole mounts only (controls ordered separately) ^{17,18}		PIR2 Seven pole mounts only (controls ordered separately) ^{17,18}		
PIR				PIR2 Seven pole mounts only (controls ordered separately) ^{17,18}		PIR2 Seven pole mounts only (controls ordered separately) ^{17,18}		
PIR				PIR2 Seven pole mounts only (controls ordered separately) ^{17,18}		PIR2 Seven pole mounts only (controls ordered separately) ^{17,18}		
PIR				PIR2 Seven pole mounts only (controls ordered separately) ^{17,18}		PIR2 Seven pole mounts only (controls ordered separately) ^{17,18}		
PIR				PIR2 Seven pole mounts only (controls ordered separately) ^{17,18}		PIR2 Seven pole mounts only (controls ordered separately) ^{17,18}		
PIR				PIR2 Seven pole mounts only (controls ordered separately) ^{17,18}		PIR2 Seven pole mounts only (controls ordered separately) ^{17,18}		
PIR				PIR2 Seven pole mounts only (controls ordered separately) ^{17,18}		PIR2 Seven pole mounts only (controls ordered separately) ^{17,18}		
PIR				PIR2 Seven pole mounts only (controls ordered separately) ^{17,18}		PIR2 Seven pole mounts only (controls ordered separately) ^{17,18}		
PIR				PIR2 Seven pole mounts only (controls ordered separately) ^{17,18}		PIR2 Seven pole mounts only (controls ordered separately) ^{17,18}		
PIR				PIR2 Seven pole mounts only (controls ordered separately) ^{17,18}		PIR2 Seven pole mounts only (controls ordered separately) ^{17,18}		
PIR				PIR2 Seven pole mounts only (controls ordered separately) ^{17,18}		PIR2 Seven pole mounts only (controls ordered separately) ^{17,18}		
PIR				PIR2 Seven pole mounts only (controls ordered separately) ^{17,18}		PIR2 Seven pole mounts only (controls ordered separately) ^{17,18}		
PIR				PIR2 Seven pole mounts only (controls ordered separately) ^{17,18}		PIR2 Seven pole mounts only (controls ordered separately) ^{17,18}		
PIR				PIR2 Seven pole mounts only (controls ordered separately) ^{17,18}		PIR2 Seven pole mounts only (controls ordered separately) ^{17,18}		
PIR				PIR2 Seven pole mounts only (controls ordered separately) ^{17,18}		PIR2 Seven pole mounts only (controls ordered separately) ^{17,18}		
PIR				PIR2 Seven pole mounts only (controls ordered separately) ^{17,18}		PIR2 Seven pole mounts only (controls ordered separately) ^{17,18}		
PIR				PIR2 Seven pole mounts only (controls ordered separately) ^{17,18}		PIR2 Seven pole mounts only (controls ordered separately) ^{17,18}		
PIR				PIR2 Seven pole mounts only (controls ordered separately) ^{17,18}		PIR2 Seven pole mounts only (controls ordered separately) ^{17,18}		
PIR				PIR2 Seven pole mounts only (controls ordered separately) ^{17,18}		PIR2 Seven pole mounts only (controls ordered separately) ^{17,18}		
PIR				PIR2 Seven pole mounts only (controls ordered separately) ^{17,18}		PIR2 Seven pole mounts only (controls ordered separately) ^{17,18}		
PIR				PIR2 Seven pole mounts only (controls ordered separately) ^{17,18}		PIR2 Seven pole mounts only (controls ordered separately) ^{17,18}		
PIR				PIR2 Seven pole mounts only (controls ordered separately) ^{17,18}		PIR2 Seven pole mounts only (controls ordered separately) ^{17,18}		
PIR				PIR2 Seven pole mounts only (controls ordered separately) ^{17,18}		PIR2 Seven pole mounts only (controls ordered separately) ^{17,18}		
PIR				PIR2 Seven pole mounts only (controls ordered separately) ^{17,18}		PIR2 Seven pole mounts only (controls ordered separately) ^{17,18}		
PIR				PIR2 Seven pole mounts only (controls ordered separately) ^{17,18}		PIR2 Seven pole mounts only (controls ordered separately) ^{17,18}		
PIR				PIR2 Seven pole mounts only (controls ordered separately) ^{17,18}		PIR2 Seven pole mounts only (controls ordered separately) ^{17,18}		
PIR				PIR2 Seven pole mounts only (controls ordered separately) ^{17,18}		PIR2 Seven pole mounts only (controls ordered separately) ^{17,18}		
PIR				PIR2 Seven pole mounts only (controls ordered separately) ^{17,18}		PIR2 Seven pole mounts only (controls ordered separately) ^{17,18}		
PIR				PIR2 Seven pole mounts only (controls ordered separately) ^{17,18}		PIR2 Seven pole mounts only (controls ordered separately) ^{17,18}		
PIR				PIR2 Seven pole mounts only (controls ordered separately) ^{17,18}		PIR2 Seven pole mounts only (controls ordered separately) ^{17,18}		
PIR				PIR2 Seven pole mounts only (controls ordered separately) ^{17,18}		PIR2 Seven pole mounts only (controls ordered separately) ^{17,18}		
PIR				PIR2 Seven pole mounts only (controls ordered separately) ^{17,18}		PIR2 Seven pole mounts only (controls ordered separately) ^{17,18}		
PIR								