

Review of Fire Station No.1 Program

Topics to be Covered

- Review Previous actions and discussions
- Review the original square footage of fire facilities
- Review follow up charge of CRG and Council
- Review revised options
- Discuss cost comparisons and possible scope changes
- Discuss desired outcomes and direction

Previous Discussion and Actions

- CRG formulated recommendations (June 2018)
- Council authorized consultants to redraw options with CRG recommendations (June 2018)
- Consultants presented redrawn options with cost estimates and alternatives (August 2018)
- Council and public discussion on station planning (August – November 2018)
- Council voted to move forward with design and pricing with consultants with comparative information and possible cost reductions (November 2018)

BACKGROUND

Original station goal - build for current and future needs

Building Footprint -

- Fire and Administration 17,768 sq. ft.
- Bay Mezzanine area 1,722 sq. ft.
- Total Square Footage 19,490 sq. ft.
- Provided for future staffing including future EMS, future engine company, full fire administration.
Hardened conference room was included in the proposed full scale EOC.

BACKGROUND

Recommendations from the CRG to evaluate fire station options that would:

- Include space for future medic unit and current fire administration only – not full future needs
- Meet town design standards - or - use most cost effective materials
- Incorporate a hardened area for emergency operations in conference area
- Be located at the original site - or - move close to public works (existing buildings)

Program Building Size

- Building Meeting Goals of CRG and Council -
- Building Footprint 14,692 sq. ft.
- Bay Mezzanine area 1,722 sq. ft.
- Total Square Footage 16,414 sq. ft.
- Provides for future medic unit, fire administration, and hardened conference/safety area. Does not include space for future administration growth, future engine company and additional bay for future engine.

Proposed Building Layouts

- Option A – Original Site to North
 - Station Area with Detention 3.3 acres
- Option B – Site close to Public Works
 - Station Area with Detention 2.9 acres
- Area included in Construction 4.8 acres



Fire Station #1
without additional
bay – Option A



Fire Station #1 without additional bay – Option B

Discussion Topics

- Comparison with Desoto Costs
- Possible Reduction in Site Area and Costs
- Possible Further Reductions in Building Costs
- Cost Goals of the Council
- Next Steps

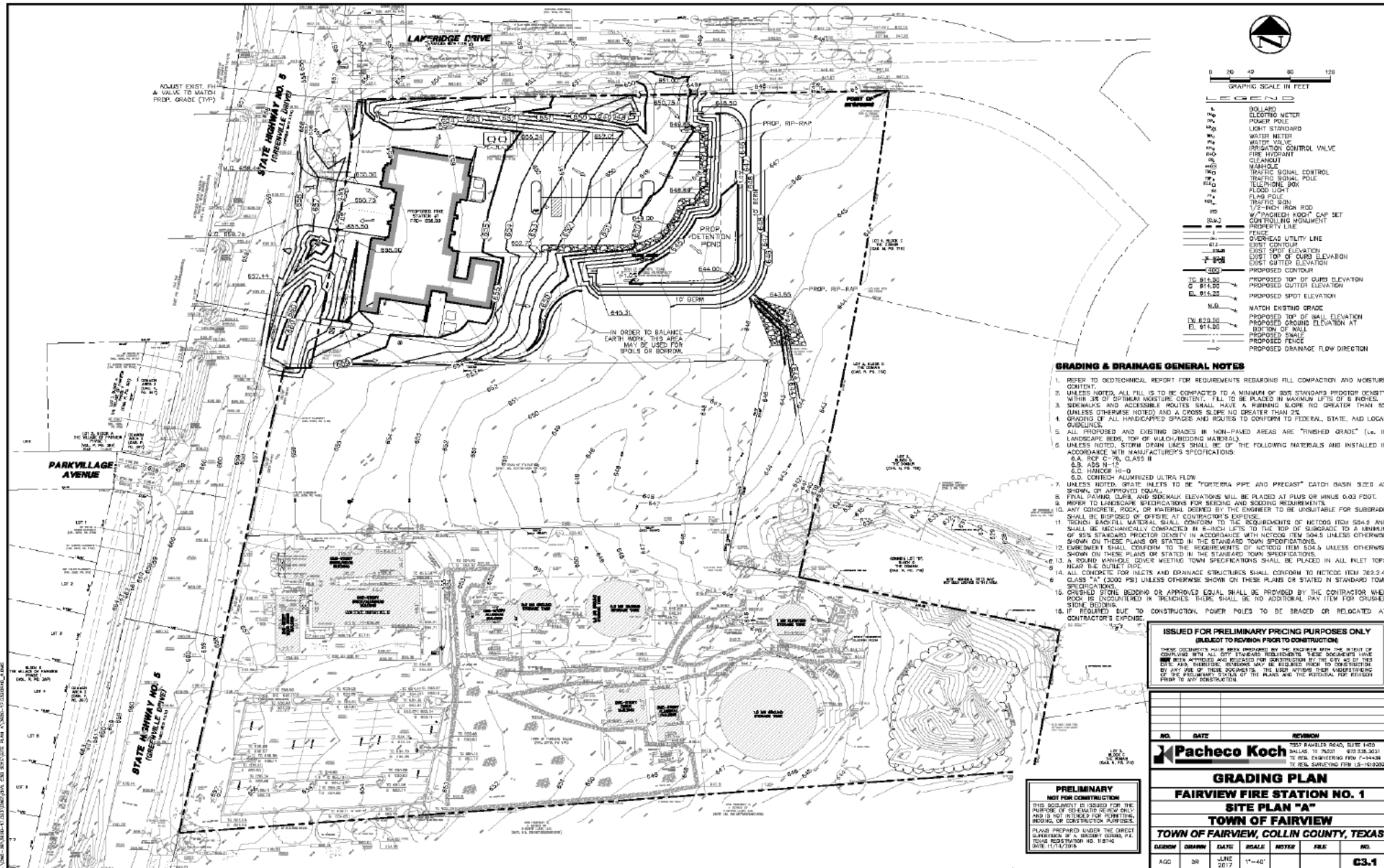
Comparison with Desoto Station

	Square Footage	Cost/Sq. Ft.	Year Bid
Desoto	14,200 sq. ft.	\$365	2018
(Estimated Cost)		\$384	
Fairview	16,414 sq. ft.	\$550	2020

Proposed Building Layouts

- Option A – Original Site to North
 - Station Area with Detention 3.3 acres
- Option B – Site close to Public Works
 - Station Area with Detention 2.9 acres
- Area included in Construction 4.8 acres

- Option C – Original Site with limited access
 - Station area with Detention 2.7 acres
- Area included in Construction 2.7 acres



Fire Station #1 without additional bay – Option C

Further Discussion

- Further Comparison with Desoto Costs and Possible Further Reductions in Building Costs
- Cost Goals of the Council
- Next Steps and Meetings