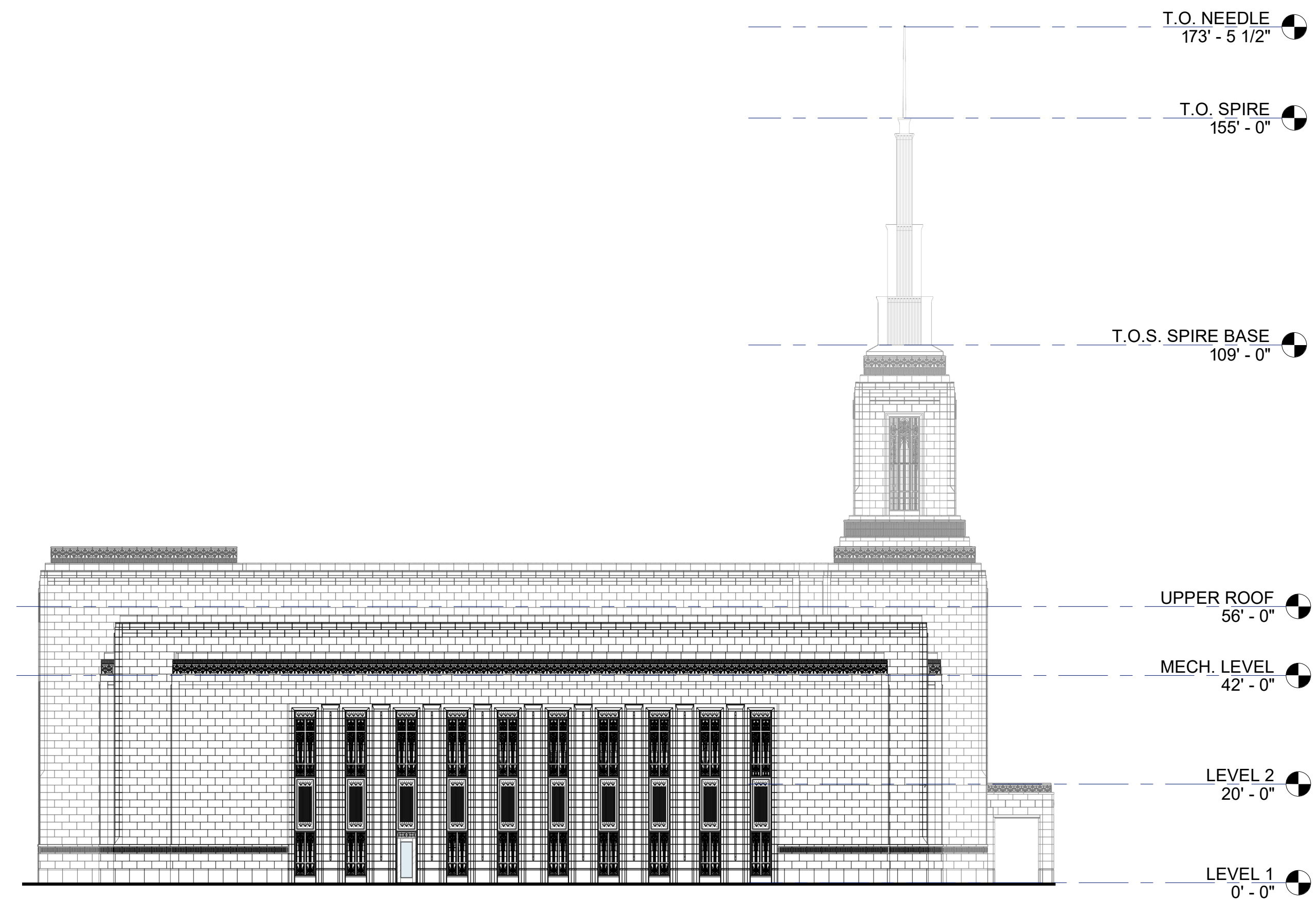
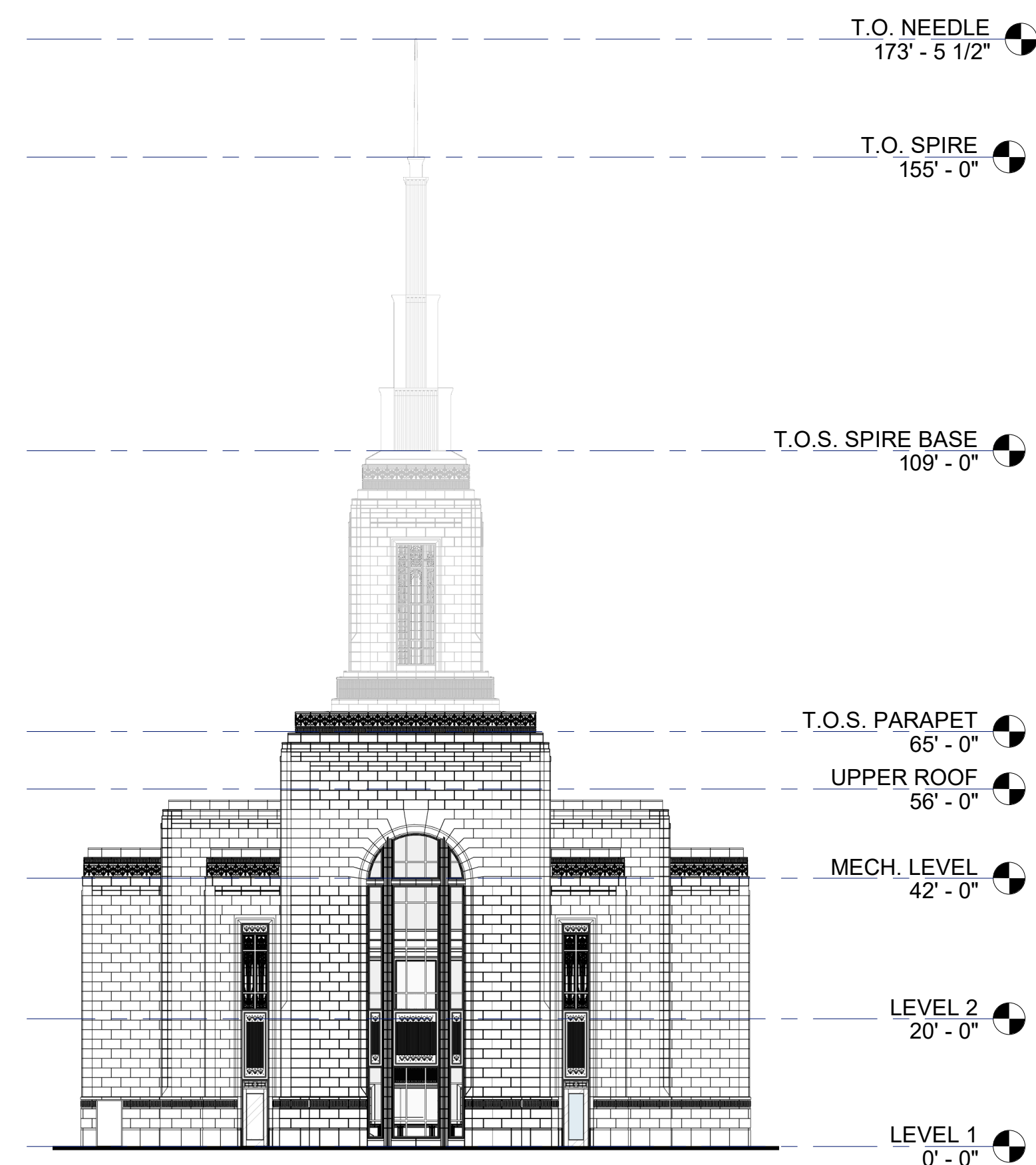


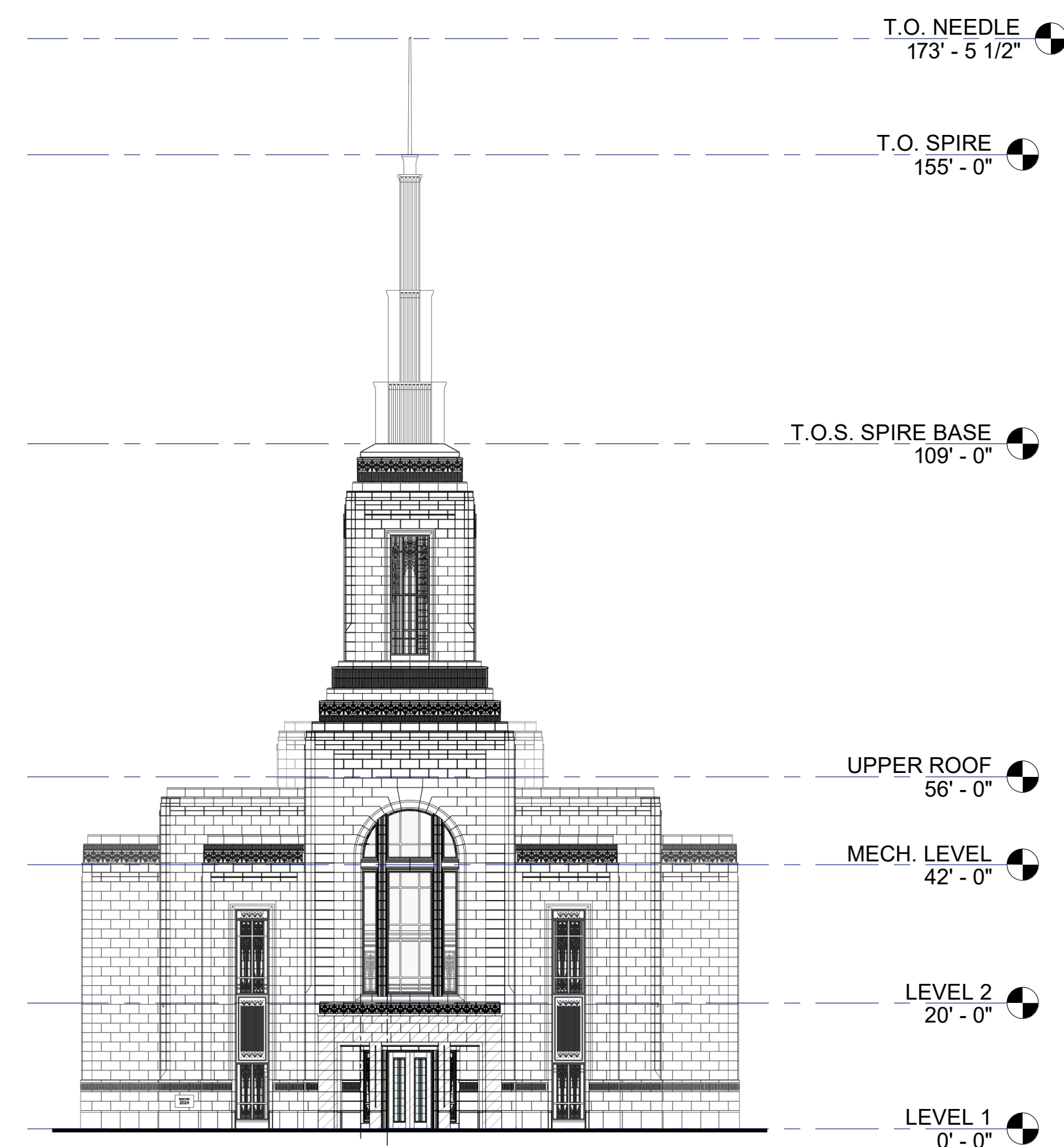
1 EXTERIOR ELEVATION - EAST
1" = 20'-0"



2 EXTERIOR ELEVATION - WEST
1" = 20'-0"



3 EXTERIOR ELEVATION - NORTH
1" = 20'-0"



4 EXTERIOR ELEVATION - SOUTH
1" = 20'-0"

EXTERIOR MATERIALS	
	CARVING LIMESTONE
	FIELD - LIMESTONE
	BASE COURSE - GRANITE
	GLAZING - ART GLASS
	SPANDREL - ALUMINUM WITH BRONZE FINISH

MCKINNEY TEXAS TEMPLE EXTERIOR ELEVATIONS

APRIL 26, 2024



© COPYRIGHT REES ASSOCIATES, INC. 2024