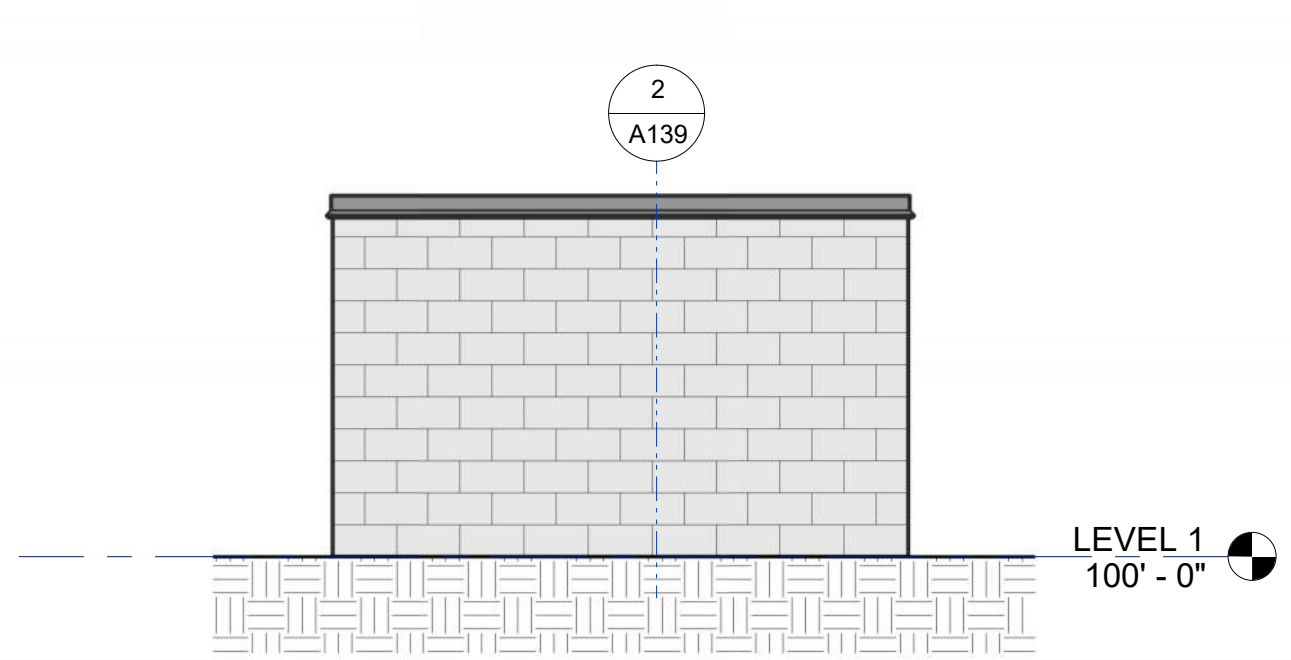
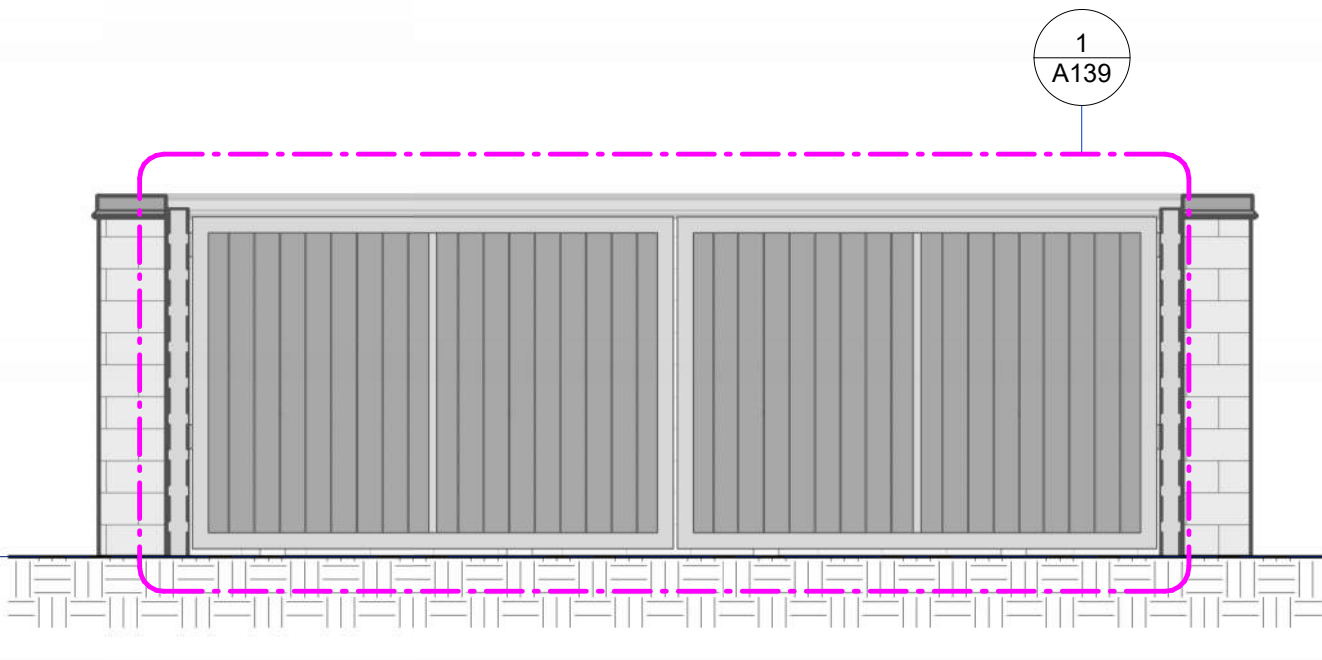


11/22/2024 8:04:04 AM Autodesk Docs://22336.00 - McKinney Temple/22336_TEMPLE INTERIOR_V24.rvt

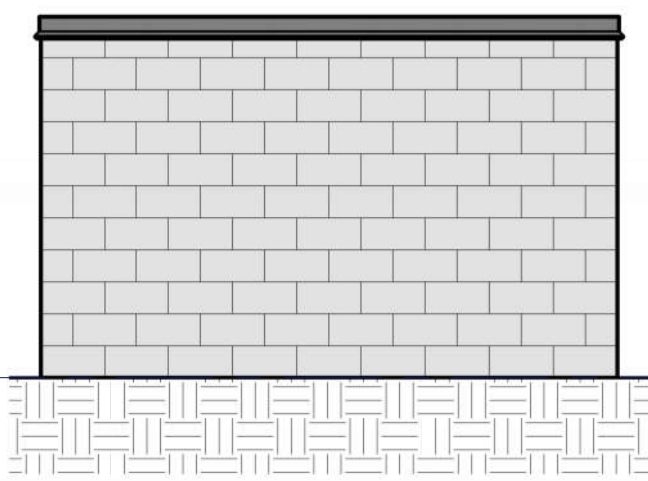
MCKINNEY TEXAS TEMPLE



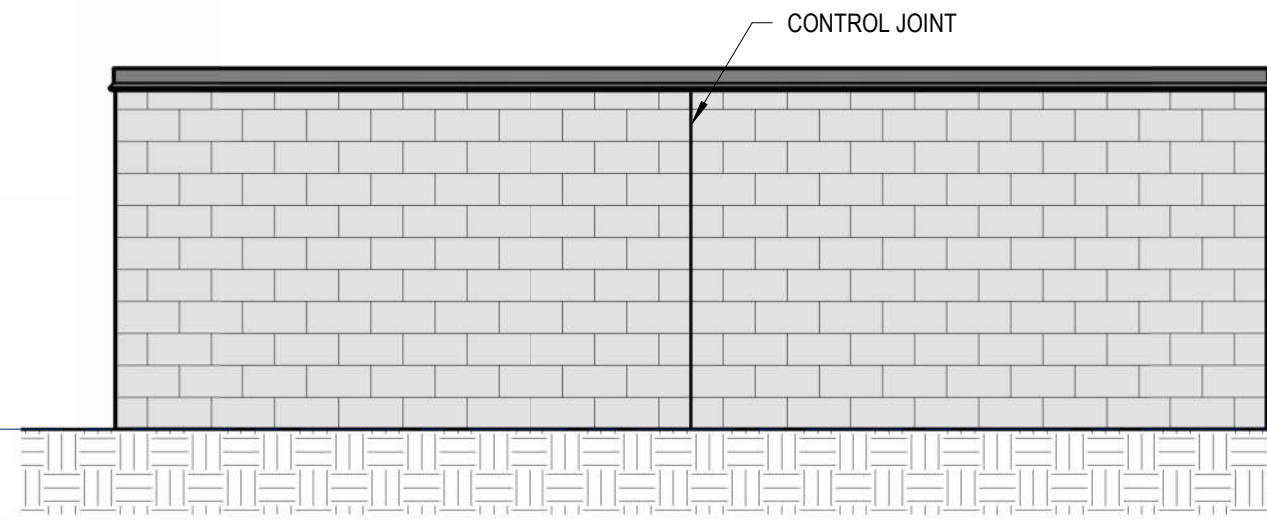
3 DUMPSTER SCREEN ELEVATION
1/4" = 1'-0"



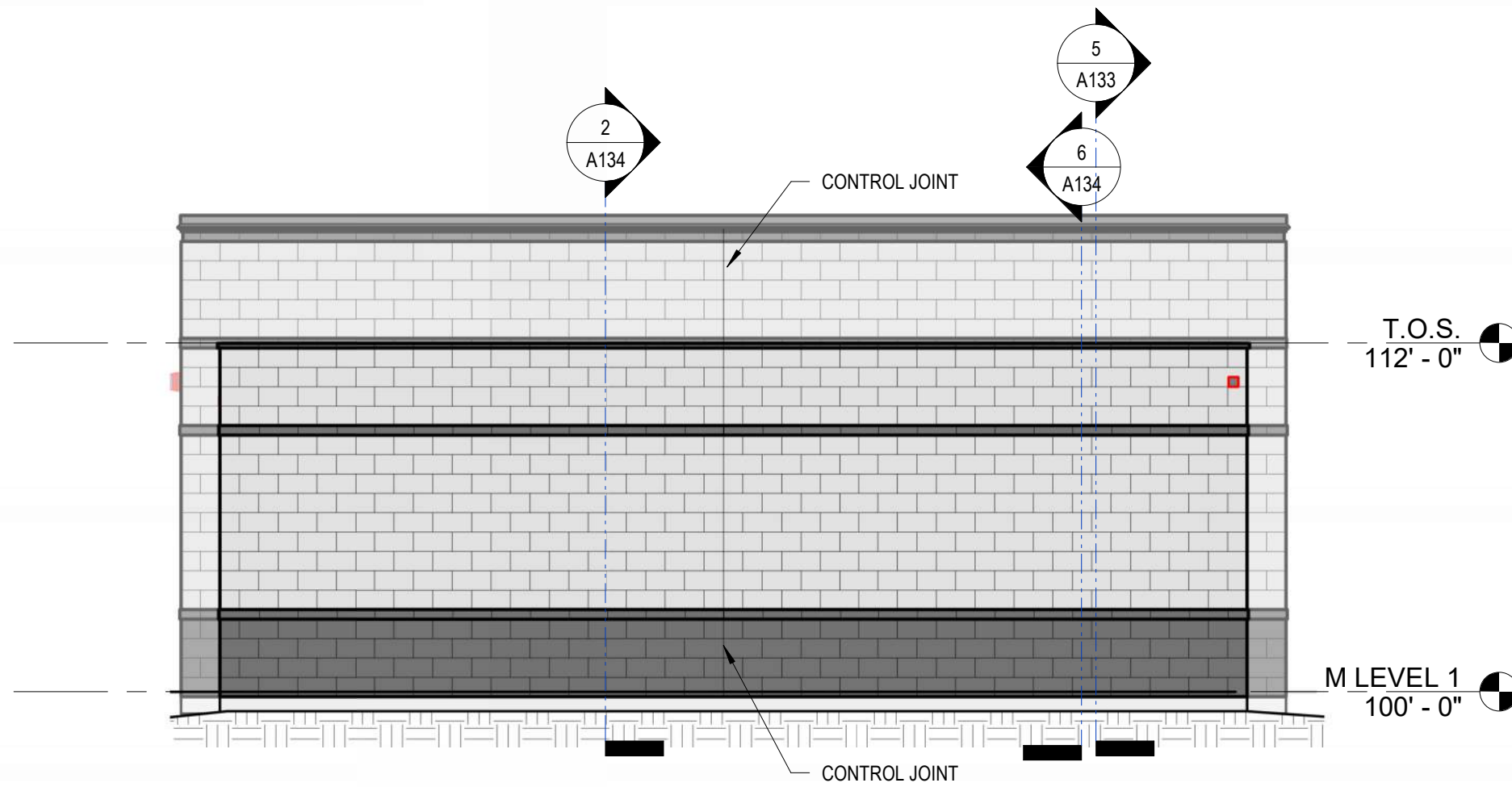
4 DUMPSTER SCREEN ELEVATION
1/4" = 1'-0"



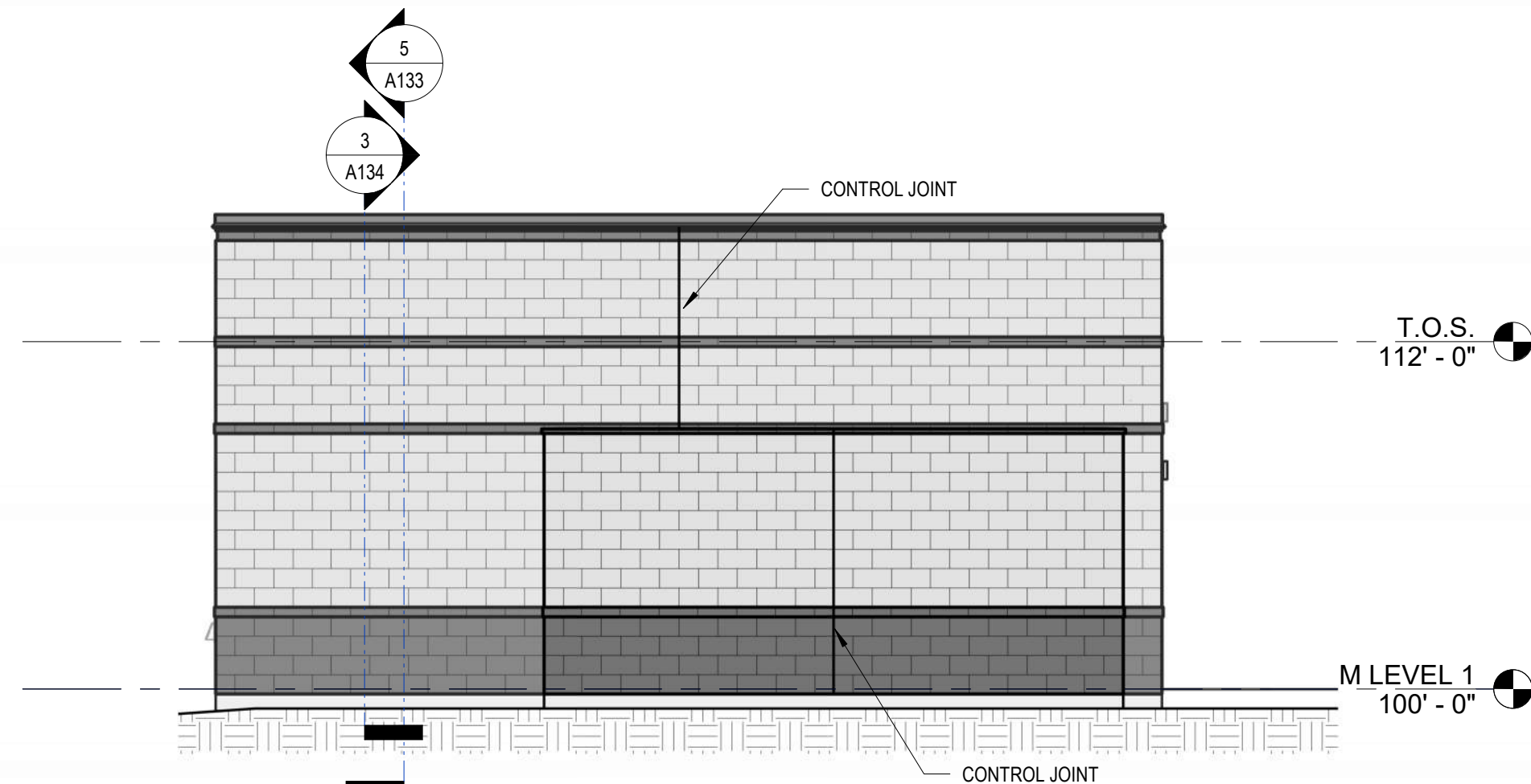
6 DUMPSTER SCREEN ELEVATION
1/4" = 1'-0"



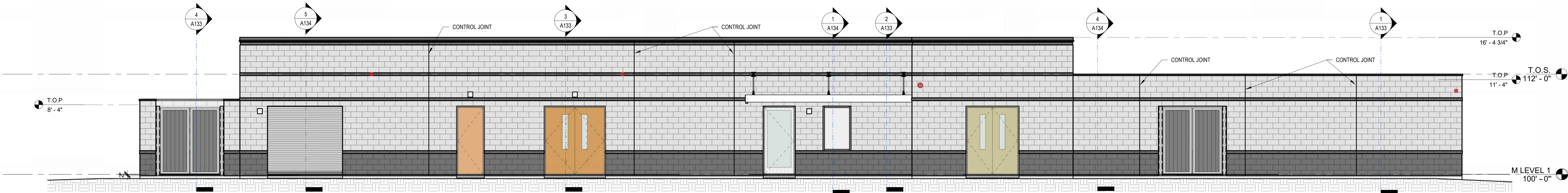
5 DUMPSTER SCREEN ELEVATION
1/4" = 1'-0"



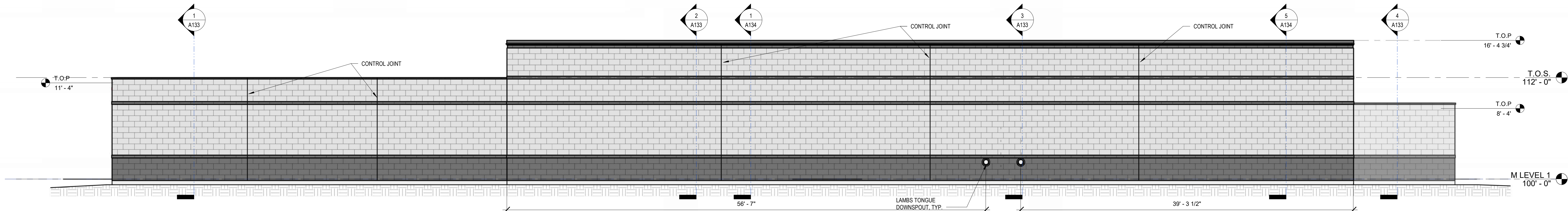
9 GROUNDS & DISTRIBUTION BLDG SOUTH ELEVATION
3/16" = 1'-0"



8 GROUNDS & DISTRIBUTION BLDG NORTH ELEVATION
3/16" = 1'-0"



10 GROUNDS & DISTRIBUTION BLDG WEST ELEVATION
3/16" = 1'-0"



7 GROUNDS & DISTRIBUTION BLDG EAST ELEVATION
3/16" = 1'-0"

GENERAL NOTES

- All Dimensions Are to Face of Concrete, Exterior Face of Precast/GFRP Cladding, Face of Metal Stud, Center of Door Opening, Center of Plumbing Fixtures, or Grid Lines Unless Noted Otherwise.
- All Walls & Columns Shown as Shaded Indicate Concrete Walls & Columns See Structure Details - Typical.
- All Walls With This Pattern Indicate Fire-Rated Walls With Metal Stud Framing & Built to Deck.
- All Walls With This Pattern Indicate Sound-Rated Walls With Metal Stud Framing & Built to Deck.
- All Walls With This Pattern Indicate Walls With Metal Stud Framing Built to Deck.
- All Walls With This Pattern Indicate Metal Stud Framing. Refer to A550 for Height.
- Refer to Wall Section A300 Series and Structural S200 Series for Vertical Rough Openings. Refer to Dimension Plans for All Exterior & Horizontal Rough Opening Dimensions.
- Refer to Slab Edge Plans for All Floor Opening Dimensions.
- Refer to G Series Sheets for Typical Accessibility Clearance and Compliance Requirements.
- Provide Backing Behind All Surface Mounted Equipment and/or Fixtures Per Casework and Millwork Details.
- All Furniture to be provided by Owner, U.N.O. Furniture only shown for coordination purposes.

Split Faced CMU

Honed CMU

REES

1025 N. Stemmons Freeway, Suite 737
Dallas, Texas 75207
214.522.7337 main

AN EMPLOYEE-OWNED FIRM
ARCHITECTURE PLANNING INTERIORS

CONSULTANTS

Civil / Landscape
KIMLEY-HORN
Tom Coppin
13455 Noel Rd - Suite 700
Dallas, TX 75240
PH: 916.792.1759

Structural Engineer
BLISS & NYITRAY
Adam Phelps
10440 N. Central Expressway
Suite 1530
Dallas, TX 75231
PH: 214.432.8232

**Mechanical - Electrical -
Plumbing Engineering**
WSP

Anthony Pirano
3102 Oak Lawn Ave - Suite 450
Dallas, TX 75219
PH: 469.859.4768

Lighting Design
OLDER LIGHTING, LLC
Scott Oldner
4645 Greenville Ave - Studio B
Dallas, TX 75206
PH: 214.280.7653

Acoustical & Low Voltage Design

WJHW
Greg Hughes
3424 Midcourt Rd - Suite 124
Carrollton, TX 75006
PH: 469.321.5330

Fire Suppression Engineer
REED FIRE PROTECTION
Albert Reed
14651 Dallas Pkwy - Suite 816
Dallas, TX 75254
PH: 214.543.7368

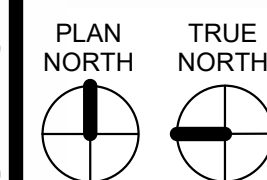
MCKINNEY TEXAS TEMPLE

EAST STACY ROAD, FAIRVIEW TEXAS

No.	Date
Revisions	
Project No. 22336.00	DISCLAIMER These documents have been prepared under the direct supervision of Robert Genter, TX Registration No. 22105 and are NOT intended for regulatory approval, bidding, permitting, or construction purposes.
Drawn J.M. J.S. K.L. K.T.	Checked Approved

Key:

M1 M2



CONSTRUCTION DOCUMENTS

Title:
GROUNDS &
DISTRIBUTION BLDG
- EXTERIOR
ELEVATIONS

Scale: As indicated

Drawing No.

A132

Issue Date
NOVEMBER 22, 2024

© COPYRIGHT REES ASSOCIATES, INC. 2024

NOT FOR CONSTRUCTION OR REGULATORY REVIEW - PRICING AND COORDINATION PURPOSES ONLY