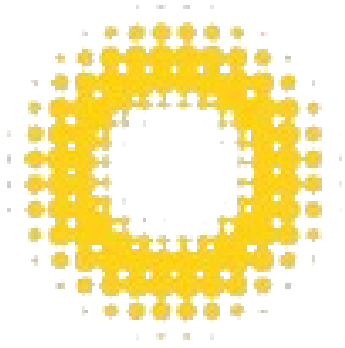
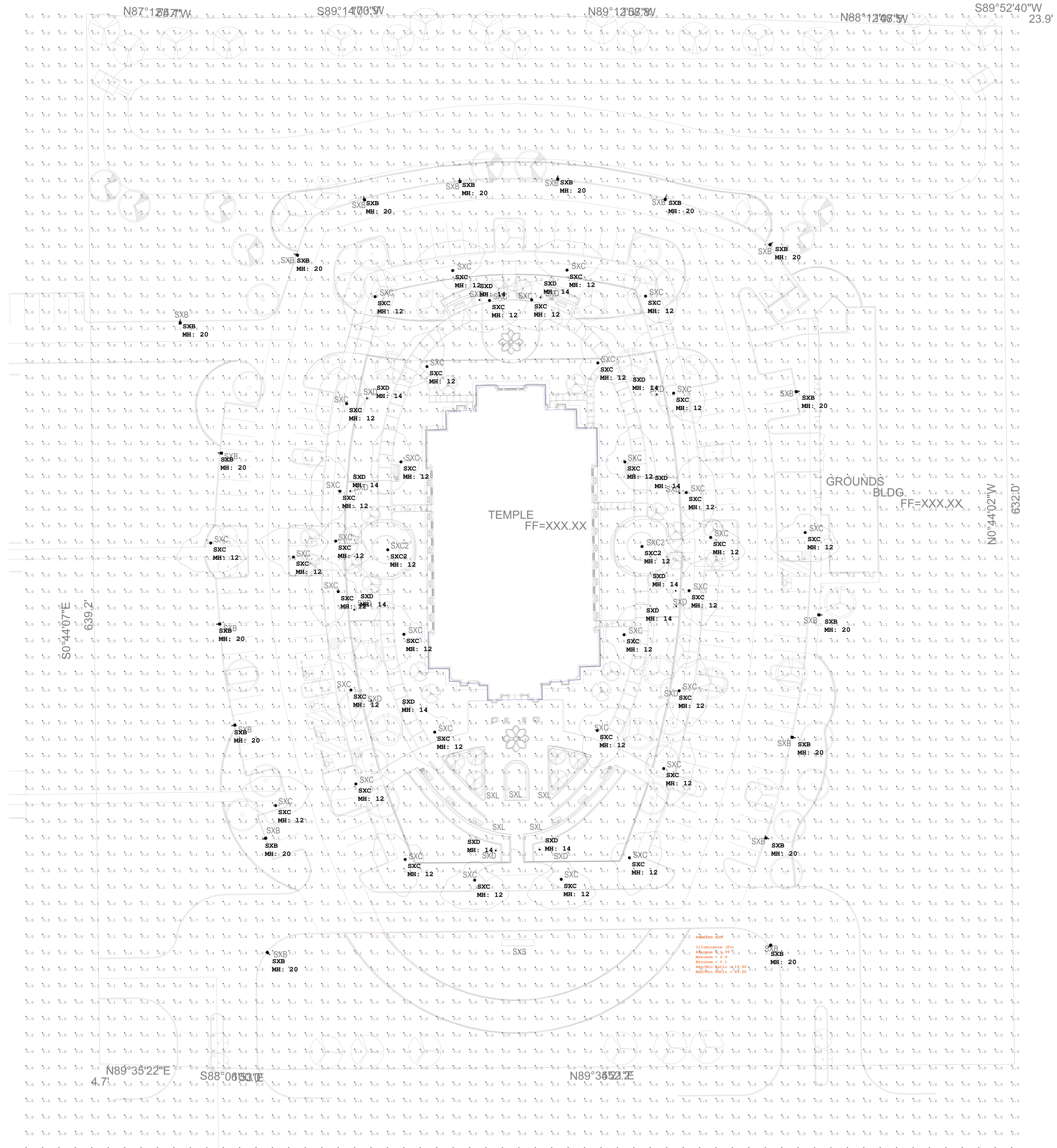


MCKINNEY TEXAS TEMPLE
Site Lighting Plan
 APRIL 26, 2024



REES



Calculation Summary
Scene: DIMMING PARKING AREA

Symbol	Type	Qty	Manufacturer / Catalog Number	Total Lumen Output	Total Input Watts	Light Lost Factor	User Defined Factor
□	SXB	17	LITHONIA DSX1 LED P4 40K 70CRI T4H HS DM19AS 20' POLE	13997	123.937	0.850	1.000
○	SXC	34	NERI LU6000x-TYPE III 4000K 3500 12' POLE	2970	36	0.850	1.000
○	SXC2	2	NERI LU6000x-TYPE V 4000K 3500 12' POLE	2983	36	0.850	1.000
○	SXD	12	BEGA PERFORMANCE FLOOD	1917	20	0.850	1.000

Calculation Grid Location	Calc. Height (Ft.)	Units	Avg	Max	Min	Avg/Min
PARKING LOT	Fc		1.99	4.9	0.1	19.90

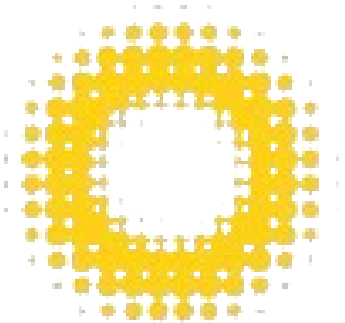


© 2024 REES ASSOCIATES, INC.

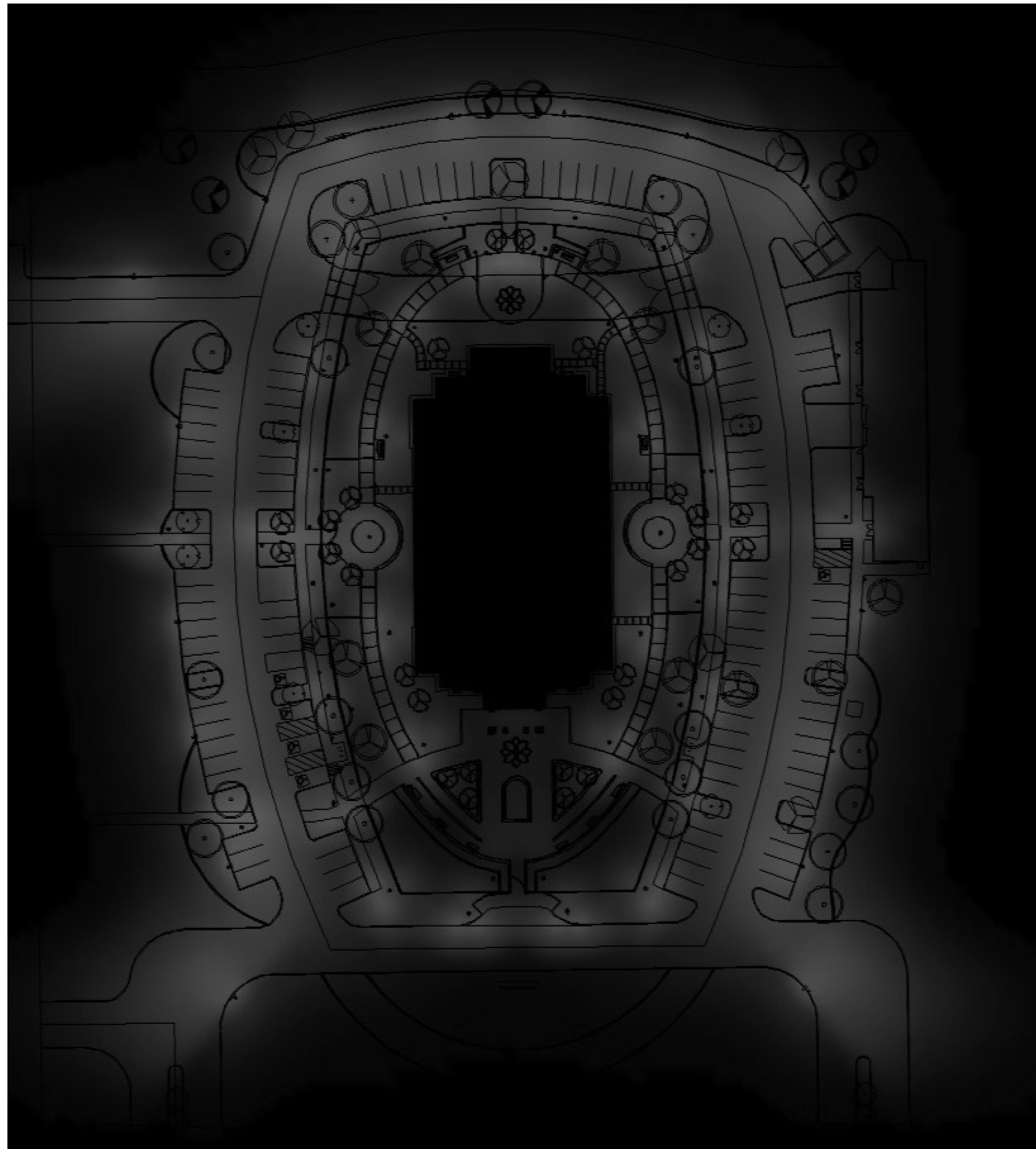
MCKINNEY TEXAS TEMPLE

Site Lighting Photometric Plan - Calculation

APRIL 26, 2024



REES



Luminaire Schedule							
Scene: DIMMING PARKING AREA							
Symbol	Type	Qty	Manufacturer / Catalog Number	Total Lumen Output	Total Input Watts	Light Lost Factor	User Defined Factor
□	SXB	17	LITHONIA DSX1 LED P4 40K 70CRI T4M HS DM19AS 20' POLE	13997	123,937	0.850	1.000
○	SXC	34	NER1 LU6000x-TYPE III 4000K 3500 12' POLE	2970	36	0.850	1.000
○	SXC2	2	NER1 LU6000x-TYPE V 4000K 3500 12' POLE	2983	36	0.850	1.000
○	SXD	12	BEGA PERFORMANCE FLOOD	1917	20	0.850	1.000
Calculation Summary							
Scene: DIMMING PARKING AREA							
Calculation Grid Location	Calc. Height (ft.)	Units	Avg	Max	Min	Avg/Min	
PARKING LOT	Fc		1.99	4.9	0.1	19.90	

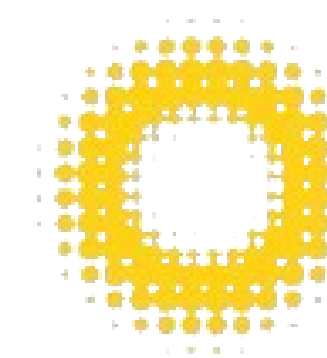


Oliver Lighting, LLC - Dallas

MCKINNEY TEXAS TEMPLE

Site Lighting Photometric Plan - Rendering

APRIL 26, 2024



REES

Type SXA & SXB: 20'/22' Area/Parking Post-Top Luminaire



D-Series Size 1 LED Area Luminaire

EPA:	0.69 ft
Length:	32.71" (8.00m)
Width:	14.26" (3.62m)
Height H1:	7.88" (20.02cm)
Height H2:	2.73" (6.93cm)
Weight:	34 lbs (15.4kg)

DSX1 LED
McKinney Temple
SXA & SXB

Introduction
The modern styling of the D-Series features a highly refined aesthetic that blends seamlessly with its environment. The D-Series offers the benefits of the latest in LED technology into a high performance, high efficacy, long-life luminaire.

The photometric performance results in sites with excellent uniformity, greater pole spacing and lower power density. D-Series outstanding photometry aids in reducing the number of poles required in area lighting applications with typical energy savings of 65% and expected

Type SXA: DSX1 LED-P3-40K-70CRI-T5W-MVOLT-RPA-7-?-DBLXD / DSX1 LED-P3-40K-70CRI-T5W-MVOLT-RPA-7-?-DBLXD
Type SXB: DSX1 LED-P2-40K-70CRI-T4M-MVOLT-RPA-7-?-DBLXD / DSX1 LED-P2-40K-70CRI-T4M-MVOLT-RPA-7-?-DBLXD

Ordering Information

EXAMPLE: DSX1 LED P7 40K 70CRI T3M MVOLT SPA NLTAR2 PIRHN DBDX

DSX LED	40K	70CRI	TSM(sxa) / T4M(sxb)	MVOLT	RPA
Series	LEDs	Color temperature	Color Rendering Index	Voltage	Mounting

DSX LED

P1	70CRI	P2	70CRI	P3	70CRI	P4	70CRI	P5	70CRI
----	-------	----	-------	----	-------	----	-------	----	-------

PIR

P1	PIR	P2	PIR	P3	PIR	P4	PIR	P5	PIR
----	-----	----	-----	----	-----	----	-----	----	-----

T.B.D.

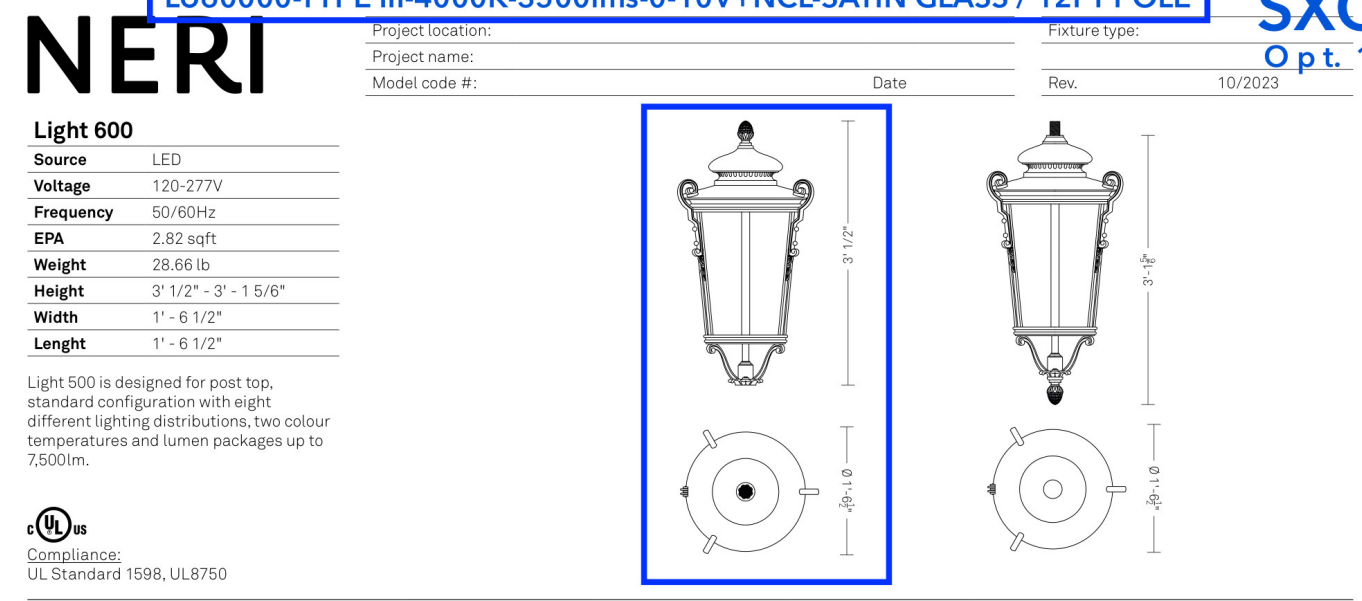
T.B.D.	T.B.D.	T.B.D.	T.B.D.	T.B.D.	T.B.D.	T.B.D.	T.B.D.	T.B.D.	T.B.D.
--------	--------	--------	--------	--------	--------	--------	--------	--------	--------

DBLXD

DBLXD	DBLXD	DBLXD	DBLXD	DBLXD	DBLXD	DBLXD	DBLXD	DBLXD	DBLXD
-------	-------	-------	-------	-------	-------	-------	-------	-------	-------

LITHONIA LIGHTING
One Lithonia Way • Conyers, Georgia 30012 • Phone: 1-800-705-SERV (3787) • www.lithonia.com
© 2011-2023 Acuity Brands Lighting, Inc. All rights reserved.

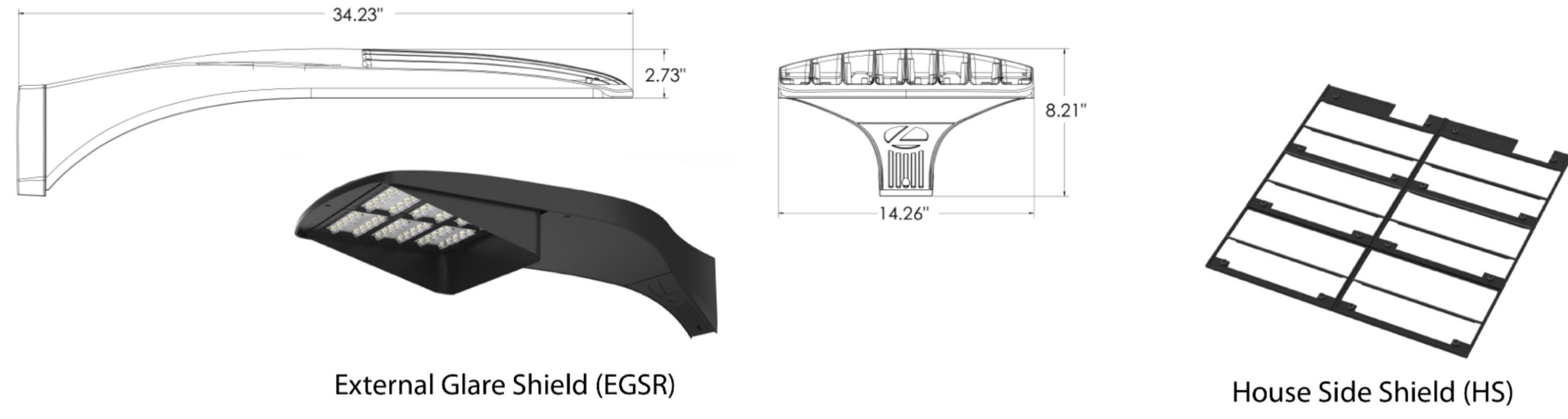
Type SXC & SXC2: 12' Pedestrian Post-Top Luminaire



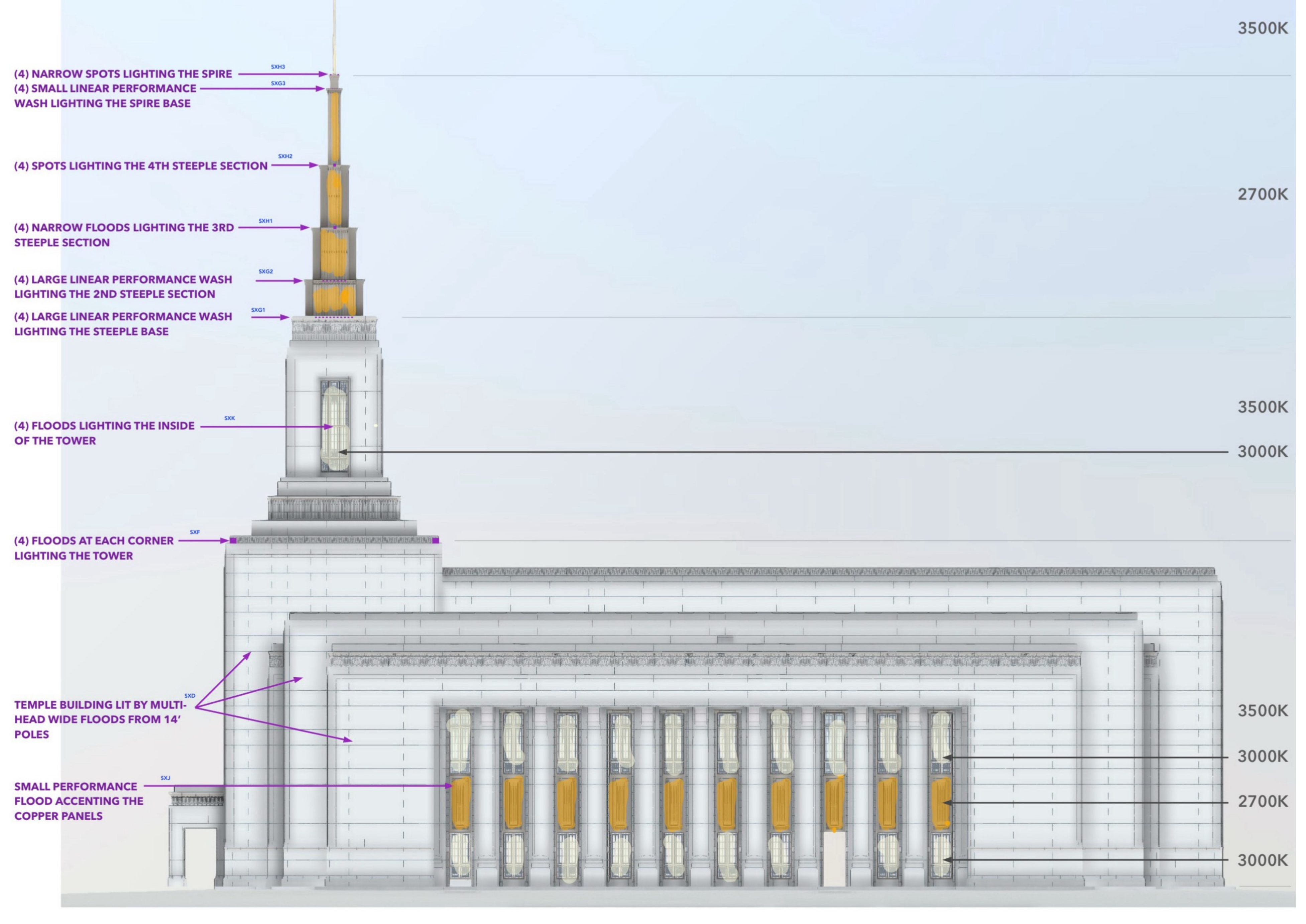
Specifications:

- Construction: Tinting upper frame in aluminum to access wiring compartment.
- Operation and maintenance: Periodic maintenance for the external cleaning of the structure and the screens from dust and smog and tightening control to the support.
- Electrical: Voltage: 120-277V (Universal); Rated power: from 15.8 W to 53.6 W; Frequency: 50/60Hz; Protection rating: IP66, IK08; Operating temp.: -31°F / +122°F; Electronic power supply with protection against short circuits, overheating and power surges with an estimated duration of 100,000 h; Standard surge protection 10kV/10kA.

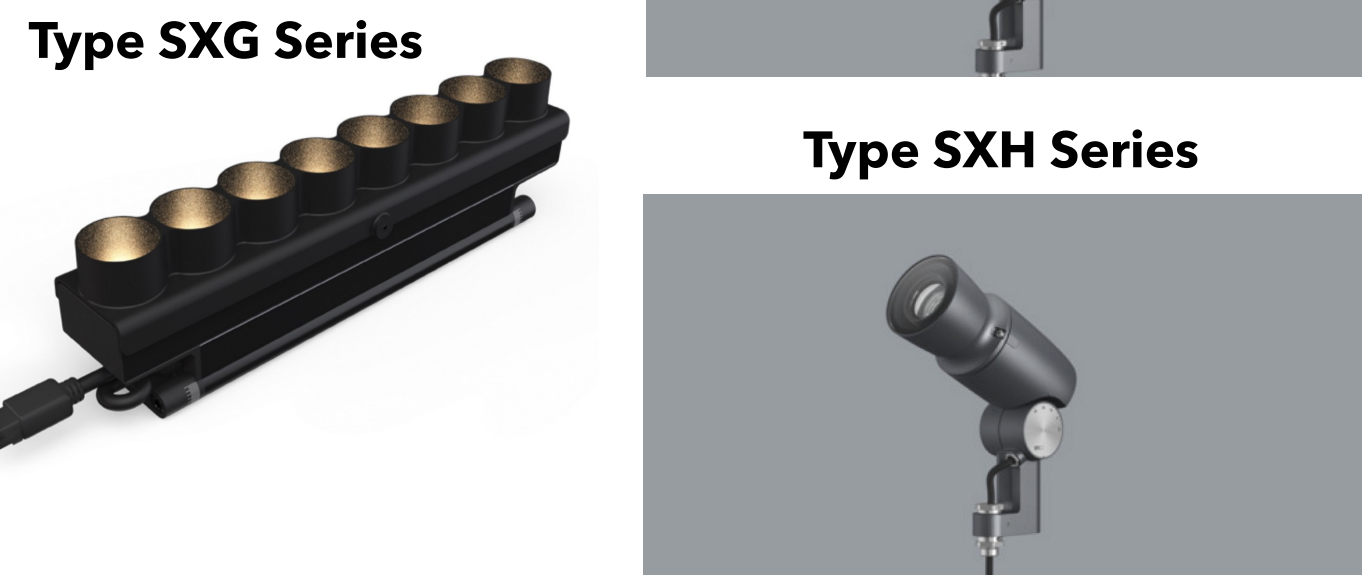
Imagery (continued):



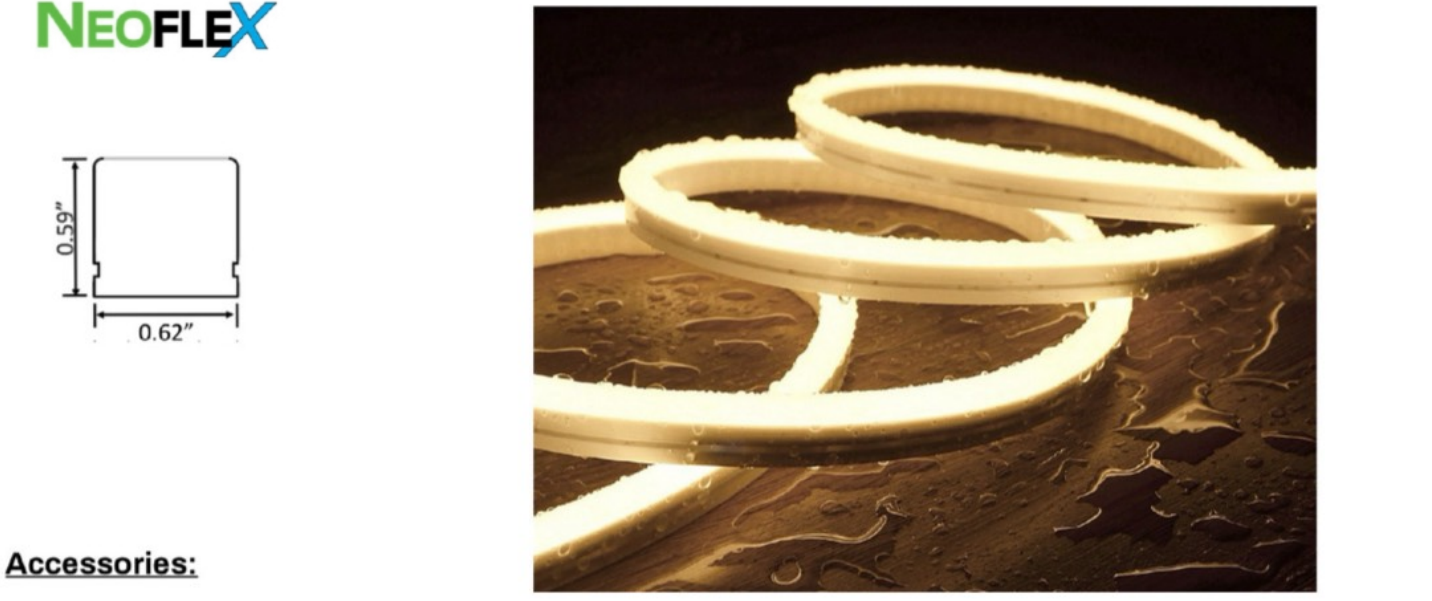
Temple 'Layering of Light' Schematic Elevation : *(final reflected building luminance will not exceed the maximum Code allowed 5fc)



Imagery:



Type SXL: Continuous Under Copping Wet Listed Linear Flex



Accessories:

777-CLIP-N3ST
Mounting clips (included)

Channels:

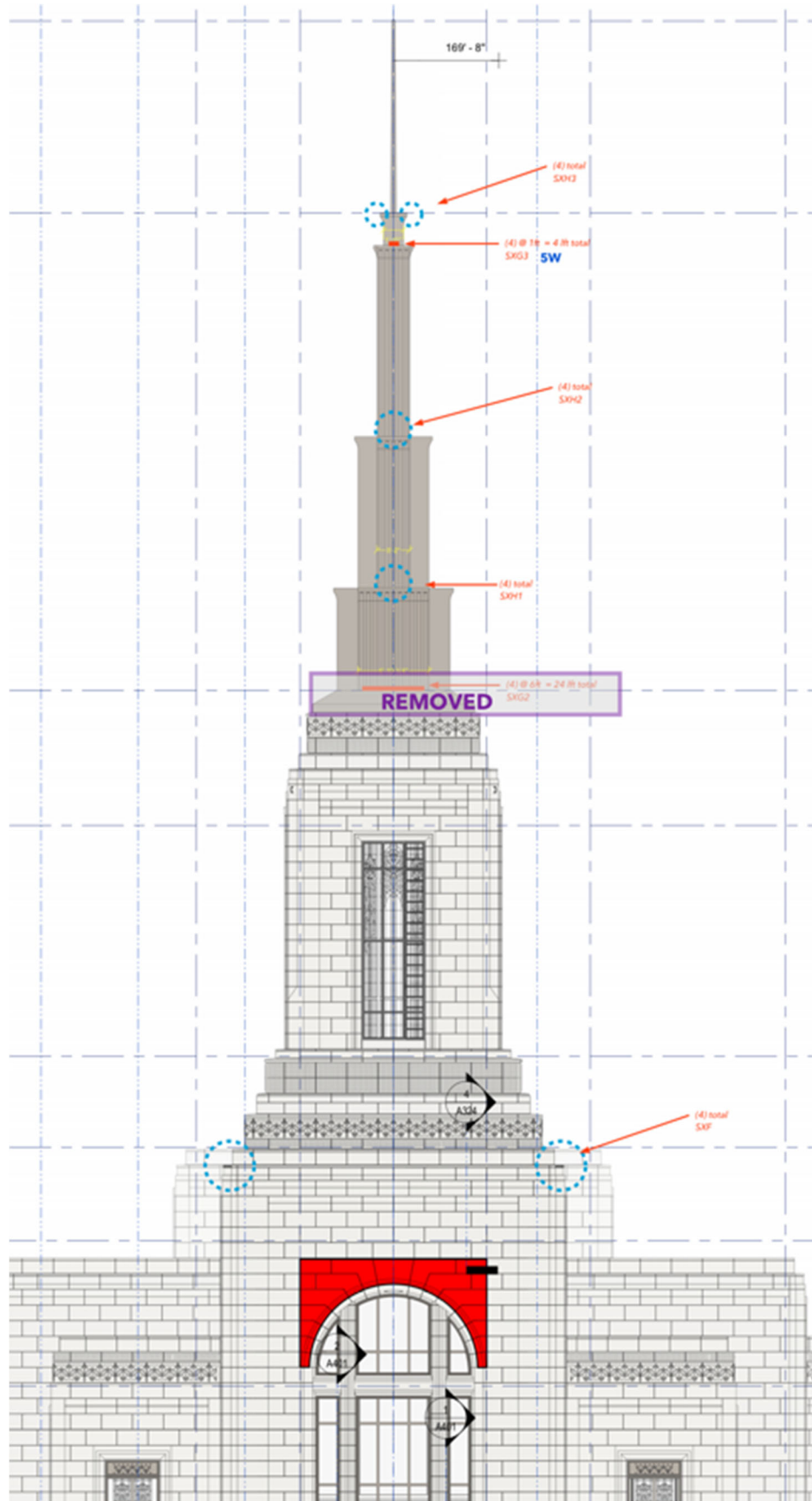
777-FLEX-N3ST
Flexible Channel (optional)

777-RIGID-N3ST
Rigid Channel (optional)

Dimensions:
0.59" x 0.62" x 0.79" x 0.98" x 0.63" x 0.58" x 0.39" x 0.69" x 0.65" x 0.55" x 0.75" x 3.28"

MCKINNEY TEXAS TEMPLE
Site Lighting Luminaire's and Lighting Design Concepts
APRIL 26, 2024





Temple 'Layering of Light' Schem

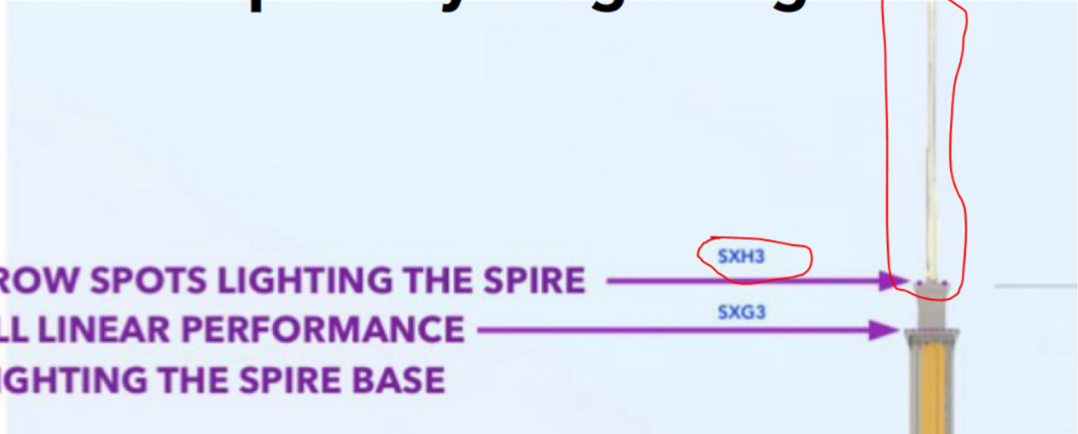
(4) NARROW SPOTS LIGHTING THE SPIRE

SXH3

(4) SMALL LINEAR PERFORMANCE

SXG3

WASH LIGHTING THE SPIRE BASE



Kona – Maximum visual comfort for a wide range of lighting tasks

High luminous flux and maximum visual comfort for lighting tasks in the outdoor area

Kona is suitable for illuminating large buildings and objects. The round, conically-shaped luminaire housing provides outstanding visual comfort with very good shielding properties. From focused lighting from a long distance to floodlighting and uniform wall-washing: all's possible. Its high luminous flux makes Kona an ideal lighting tool for large projection distances. The maintenance-free, durable optoelectronics reduce operating costs and also enable operation in difficult-to-access

installation locations. The weather-resistant housing is precisely aligned thanks to a pan-and-tilt mounting plate. Extensive mounting accessories allow Kona to be installed flexibly.



SHIELDED LIGHT FIXTURE INFORMATION SUPPORTING AND CONFORMING TO DARK SKY COMPLIANCE



Structure and characteristics

The features described here are typical of products in this range. Special versions may offer additional or varying features. A comprehensive description of the features of individual products can be found on our website.

1 ERCO Spherolit lens

- Light distributions: narrow spot, spot, flood, wide flood, extra wide flood, oval flood or wallwash
- Oval flood 360° rotation
- Narrow spot, spot and flood: cut-off angle 30°

2 ERCO LED-module

- High-power LEDs: warm white (3000K) or neutral white (4000K)
- Collimating lens made of optical polymer

3 Housing

- Graphit m
- Corrosion-resistant cast aluminum, No-Rinse surface treatment
- Double powder-coated
- Optimized surface for reduced accumulation of dirt
- Anti-glare cone: polymer, black lacquered
- Safety glass

4 Control gear

- Switchable or 0-10V dimmable

5 Mounting plate and hinge

- Corrosion-resistant cast aluminum, No-Rinse surface treatment or polymer
- Graphite m, double powder-coated or coated
- 90° tilt, 300° rotation or 120° tilt, 360° rotation
- Internal wiring

Suitable for wet locations (IP65)

Dust-proof and water jet-proof

Variants on request

- High-power LEDs: 3000K CRI 97 or 2700K, 3500K, 4000K with CRI 92
 - Housing: 10,000 further colors
- Please contact your ERCO consultant.



Design and application:
www.erco.com/kona

Kona Projectors



Improved visual comfort
 ERCO has developed luminaires with special housing designs and high-quality optical components specifically for demanding visual tasks to provide enhanced visual comfort.



Large lumen packages for very high illuminances
 The attention of the viewer can be focused via contrasting accents. ERCO offers high-performance luminaires with large lumen packages for this purpose.



Oval flood freely rotatable
 The oval flood Spherolit lens can be freely rotated with round luminaire heads to optimally match the lighting to various objects.



Various construction sizes
 The luminaires in the ERCO product range cover a wide variety of lumen categories and therefore offer an appropriate solution for a large number of lighting tasks.

Special characteristics	
	Improved visual comfort
	Large lumen packages for very high illuminances
	Oval flood, freely rotatable
	Various construction sizes

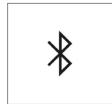
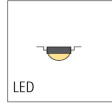
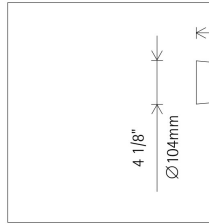
	ERCO high-power LEDs
	Efficient Spherolit technology
	Different light distributions
	Different light colors

	Excellent thermal management
	EMC-optimized
	Degree scale for good adjustability
	Pivotable through 90° Lockable
	Wet location
	Accessory for mounting variants

	Switchable
	0-10V dimmable

Beamer Zoom projector

with 1/2" I.P.S. connection thread



AC002122
 Lens unit zoom spot
 Polymer, black lacquered, can be rotated through 360°. Replacement without tools.
 Anti-reflective zoom lens made of optical polymer, infinitely focusable.



AC002123
 Lens unit zoom oval
 Polymer, black lacquered, can be rotated through 360°. Replacement without tools.
 Anti-reflective zoom lens made of optical polymer, infinitely focusable.

Our first projector with darklight lenses

The new generation of Beamer projectors brings not only the precision of museum spotlights but now also their variance to outdoor spaces: Digital control types, interchangeable distributions and new mounting possibilities offer maximum design flexibility. Innovative darklight lenses enable you to realize sophisticated outdoor projects with the best quality of light and outstanding visual comfort.

ERCO This is our first outdoor projector with darklight lenses | ERCO



 Copy link

Beamer
 First outdoor projector
 with darklight lenses



L60 with Full Louver

