



ADDENDUM #1

PROJECT: SLOAN CREEK CONNECTOR TRAIL

1. Shop drawings from Pioneer Bridge included.
2. Clarification on the drilled pier depths. Per sheet B1-7, the 24" diam. Pier depth is anticipated to be around 17 ft based on the B-01 bore analysis.
3. The details on the existing abutment on the East side of the creek is provided for your use, but is already in place. It was constructed with the existing apartments that were built along the East side of the creek. All access and construction will be accomplished from the West side of the creek along the DART ROW.
4. Station 28+00 to 42+00 and beyond is all Town of Fairview owned land, so any staging can be done in this area as necessary or stockpiling of materials, spreading of excess topsoil, etc.
5. Temporary rock road materials as needed for crane access and bridge installation to be removed from trail area and stockpiled north of the pedestrian bridge for future town use. (No haul off required).
6. Town to supply water (no charge) from nearby fire hydrants on Fairview Pkwy.
7. Anticipated start date June 1st.



SIGNED

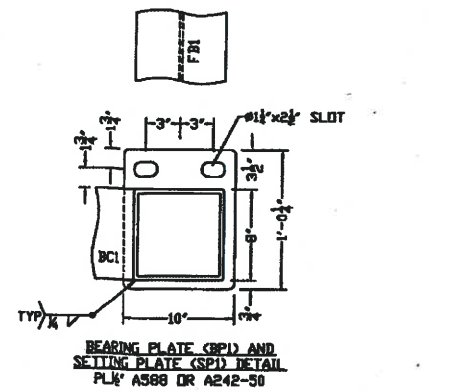
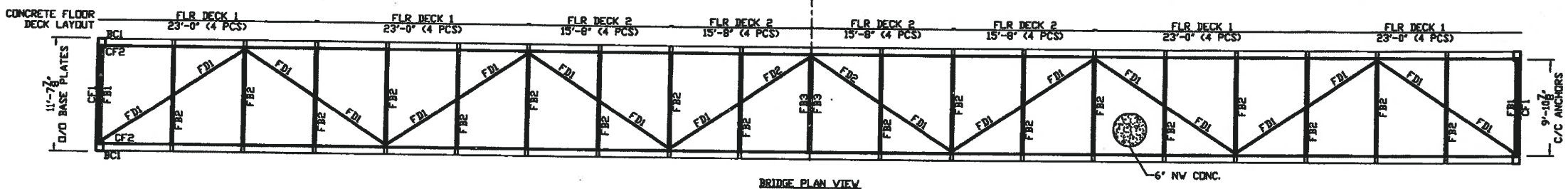
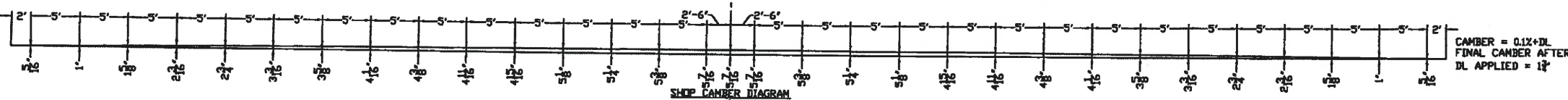
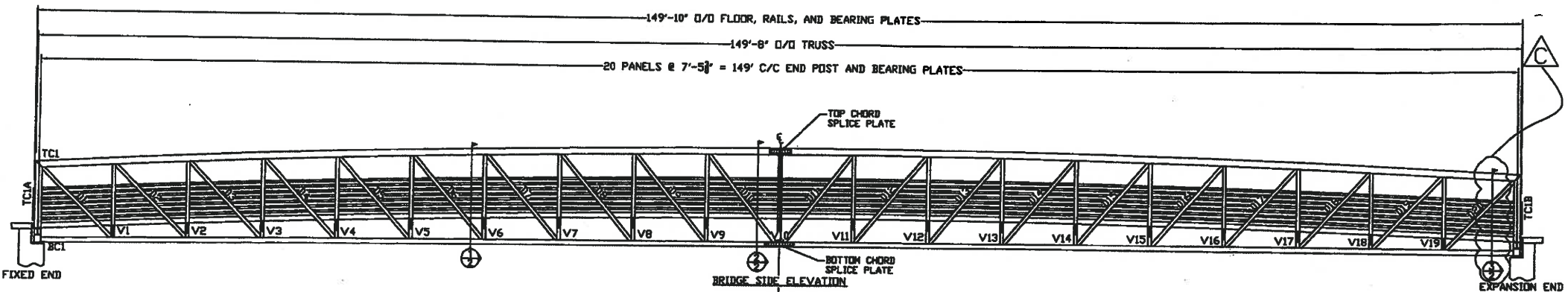
4-25-19

DATE

GENERAL NOTES:

1. ALL DESIGN VALUES ARE IN ACCORDANCE WITH THE AASHTO LRFD STANDARD SPECIFICATIONS FOR HIGHWAY BRIDGES, 7TH EDITION WITH AASHTO PEDESTRIAN BRIDGE GUIDE SPECS 2ND EDITION.
2. WELDING TO CONFORM WITH THE AMERICAN WELDING SOCIETY D11 LATEST REVISION. WELDING TO BE PERFORMED BY EXPERIENCED WELDERS QUALIFIED IN ACCORDANCE WITH A.W.S. PROCEDURES. WELDING ELECTRODES TO BE A.W.S. E81T-X SERIES. WELD PROCESS TO BE FCAW OR GMAW.
3. ALL STRUCTURAL STEEL TO HAVE A MINIMUM YIELD STRENGTH OF 50,000 PSI WITH A WEATHERING FINISH.
4. STRUCTURAL WELDS WILL BE A MINIMUM OF 3/8" FILLET UNLESS SHOWN OTHERWISE. MINIMUM WELD DOES NOT APPLY TO SEAL WELDS.
5. ANCHOR RODS TO BE ASTM F1554-36 GALVANIZED STEEL RODS. AT EXPANSION END, "EXPANSION" NUTS AND ANCHOR RODS SHOULD BE LOOSELY "HAND TIGHTENED" SO AS TO ALLOW THE BEARING PLATES TO SLIDE ON THE SETTING PLATES OR TEFLON PADS. AT FIXED END, NUTS SHOULD BE TIGHTENED TO SNUG-TIGHT CONDITION. PLACE SETTING PLATE AND TEFLON PADS ON SHIMS, SET BRIDGE, AND THEN GROUT UNDER SETTING PLATES. IF REQUIRED, FIELD SPlice CONNECTION BOLTS SHALL BE ASTM A325 TYPE 3 AND SHALL BE TIGHTENED BY THE TURN OF THE NUT METHOD TO OBTAIN PROPER TENSION.
6. ALL STEEL TO BE SAND BLASTED TO S.S.P.C. #7 "BRUSH-OFF BLAST CLEANING".
7. CONCRETE FLOOR DECK TO BE 4000 PSI NORMALWEIGHT (145 PCF), POURED AND FINISHED ON THE JOB SITE. THE BRIDGE SHALL BE DELIVERED FORMED WITH A GALVANIZED COMPOSITE FLOOR DECK. CONTROL JOINTS ARE NOT RECOMMENDED OR REQUIRED. HOWEVER, DEPENDING ON POUR SEQUENCE AND CURE RATES, CONTRACTOR MAY UTILIZE CONTROL JOINTS OR POUR STOPS AT THEIR DISCRETION TO MITIGATE SHRINKAGE CRACKING DURING CONCRETE CURE. CONTRACTOR TO FURNISH REINFORCING STEEL WHICH SHALL BE GRADE 60 DEFORMED BARS.
8. HAND RAILS AND ALL OTHER ACCESSIBLE SURFACES TO BE GROUND SMOOTH WITH NO SHARP EDGES OR CORNERS.
9. LENGTH OF ANCHOR RODS AND FOUNDATION DETAILS ARE FOR GENERAL ARRANGEMENT PURPOSES ONLY. ACTUAL FOUNDATION AND SUBSTRUCTURE DESIGN, RAILING, CAMBER AND SLOPE REQUIREMENTS, ELECTRICAL GROUNDING, AND CLEARANCES (FLOOD PLAIN, ROADWAY, AND WATERWAY) ARE THE RESPONSIBILITY OF OTHERS.

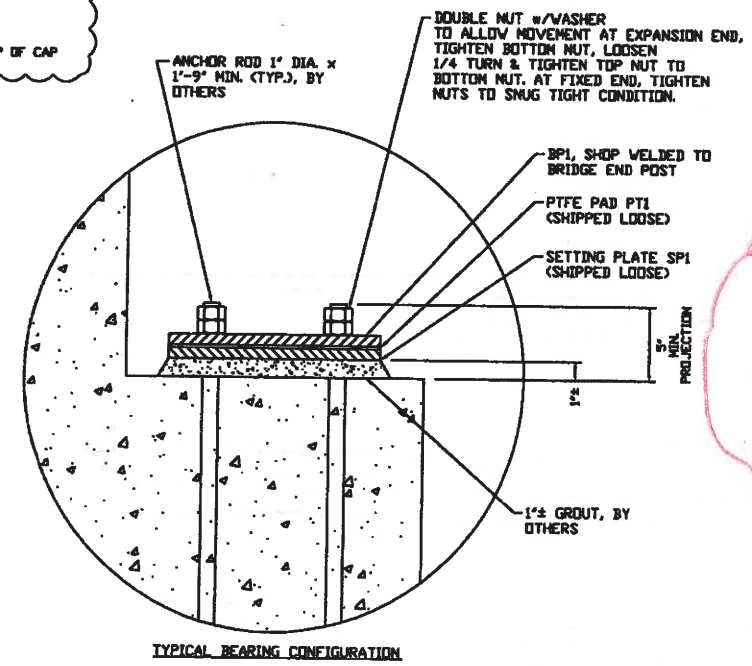
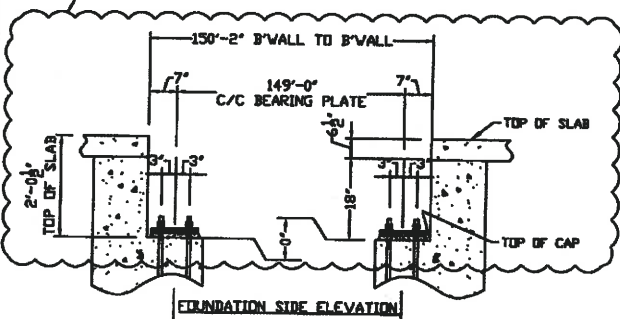
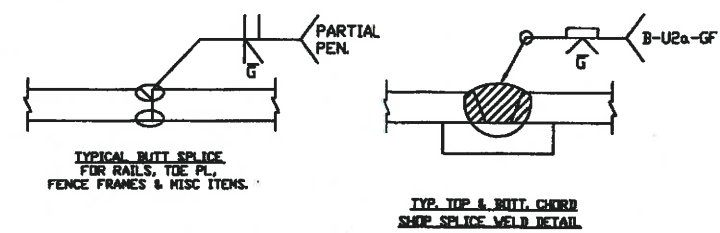
PLACARD INFO:	DESIGN CRITERIA
PEDESTRIAN TRAFFIC LIGHT VEHICLE, MAX GVW: 5 TONS MODEL: CORNERSTONE SERIAL NO 18431P	THIS BRIDGE IS DESIGNED BASED ON THE FOLLOWING CRITERIA: 1. DEAD LOAD OF 97 PSF PLUS EVENLY DISTRIBUTED LIVE LOAD OF 90 PSF. 2. DEAD LOAD PLUS CONCENTRATED LIVE LOAD OF 10,000 POUNDS. 3. WIND LOAD OF 25 PSF CALCULATED ON THE ENTIRE PROJECTED VERTICAL SURFACE AS THOUGH FULLY ENCLOSED PER AASHTO.
	PRELIMINARY LIFTING WEIGHT PRIOR TO CONCRETE INSTALLATION: 52,000 LBS



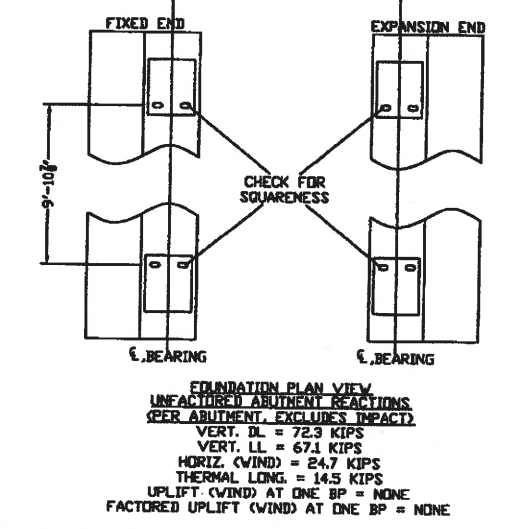
Approved Revise and Resubmit
 Rejected Furnish as Corrected
 No Exception Submit Specified Item

This review is only for general conformance with the design concept and the information given in the Construction Documents. Corrections or comments made on the shop drawings during this review do not relieve the Contractor from compliance with the requirements of the plans and specifications. Approval of a specific item shall not include approval of an assembly of which the item is a component. The Contractor is responsible for: dimensions to be confirmed and correlated at the jobsite; information that pertains solely to the fabrication process or to the means, method, and techniques, sequences and procedures of construction; coordination of the Work with that of all other trades; and performing all Work in a safe and satisfactory manner.

Firm: Lakes Engineering, Inc.
 Date: 5/8/18
 By: MRP



NOTE TO ERECTOR:
 EXPANSION END TO BE LOCATED AT EXISTING ABUTMENT



TX FIRM #11145

C	UPDATED ABUTMENT DETAILS	SAR 5/2/18	AF 5/2/18
B	REDUCED BACKWALL HEIGHT	SAR 4/17/18	AF 4/17/18
A	FOR APPROVAL	SAR 3/15/18	MRP 3/16/18

PIONEER BRIDGES
 A DIVISION OF BAILEY BRIDGES, INC.
 119 40th Street NE
 Fort Payne, AL 35967
 1-866-780-5778

PROJECT: FAIRVIEW PEDESTRIAN BRIDGE
 OWNER: CITY OF FAIRVIEW
 ADDRESS: FAIRVIEW, TX

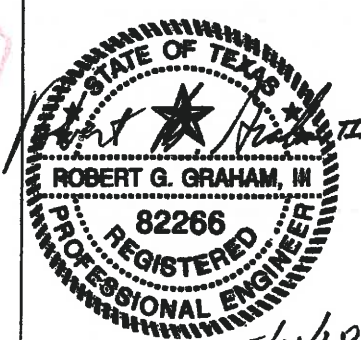
CONTRACTOR: _____
 DESCRIPTION: 10' X 150' CORNERSTONE PEDESTRIAN BRIDGE

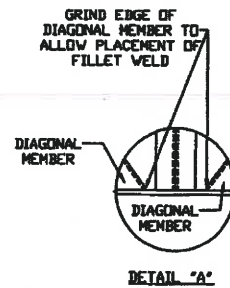
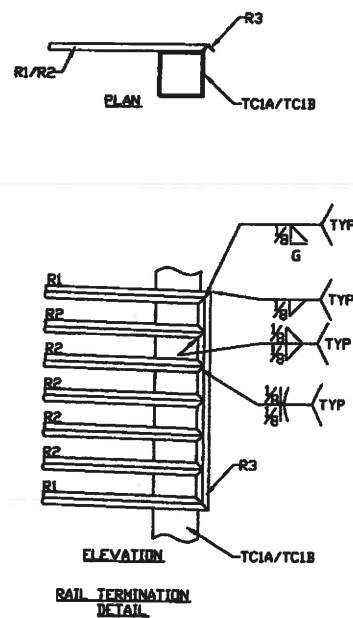
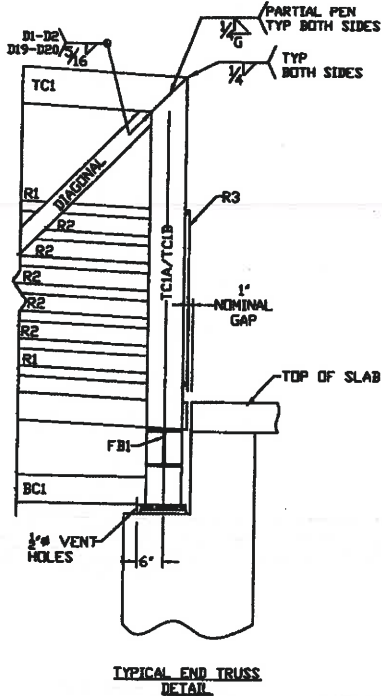
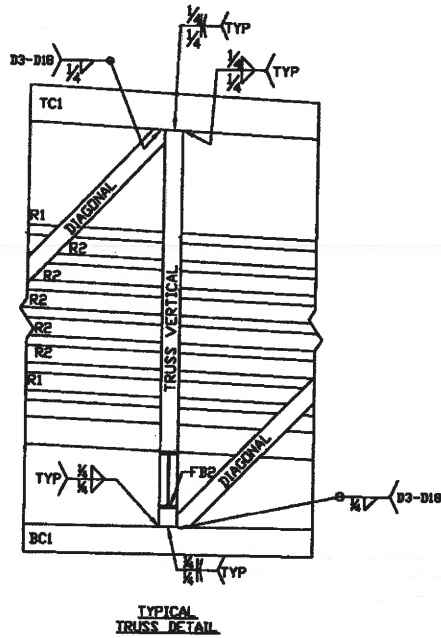
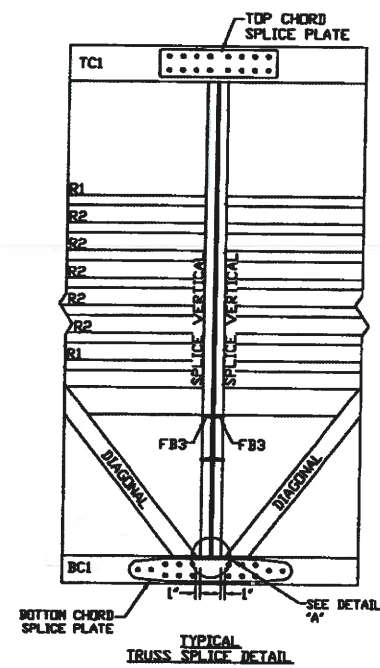
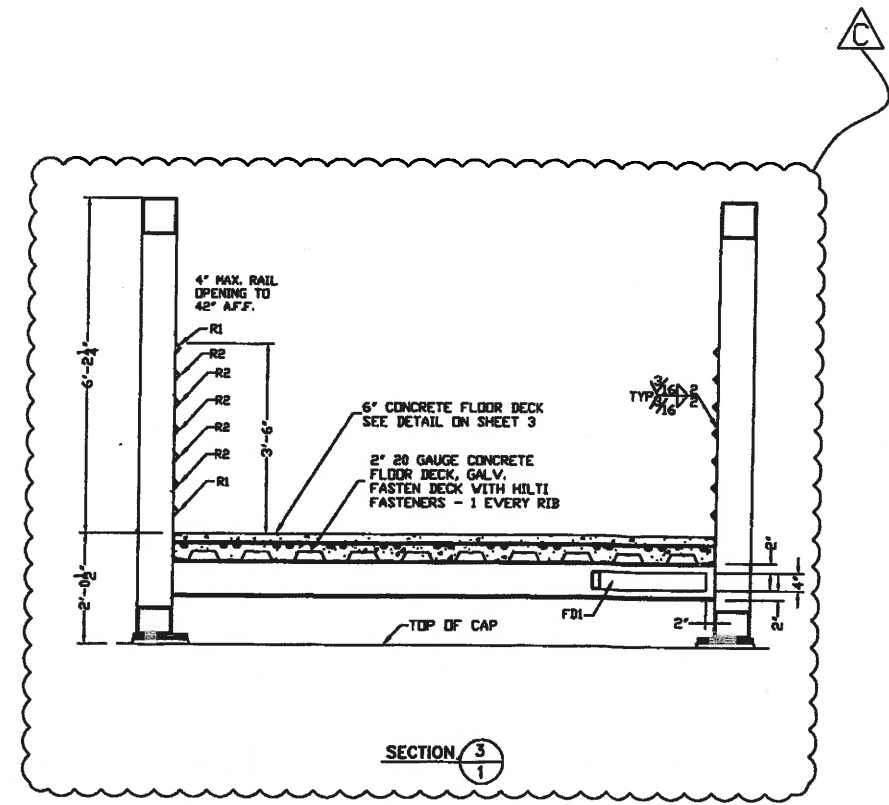
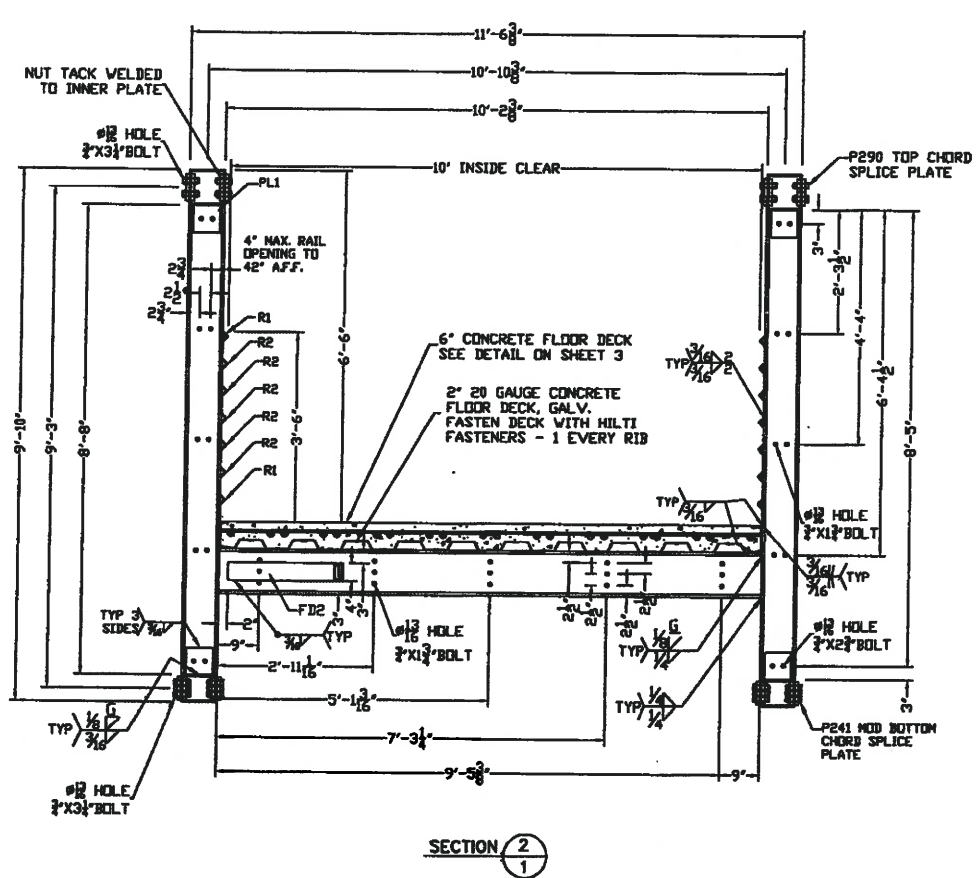
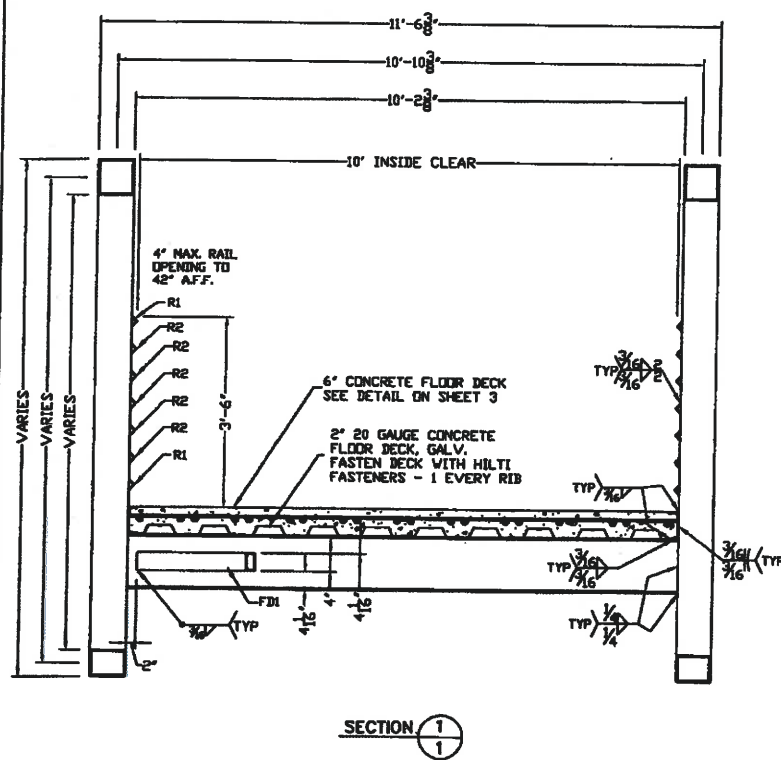
THIS BRIDGE STRUCTURE SHALL NOT BE FIELD MODIFIED IN ANY WAY WITHOUT THE CONSENT AND APPROVAL OF PIONEER BRIDGES. THESE DRAWINGS ARE THE PROPERTY OF PIONEER BRIDGES AND ARE NOT TO BE COPIED OR USED IN ANY WAY DETRIMENTAL WITHOUT THEIR WRITTEN CONSENT.

JOB NO: 18431P
 SHEET: 1 OF 3

REV. C

5/4/18





- Approved
- Rejected
- No Exception
- Revise and Resubmit
- Furnish as Corrected
- Submit Specified Item

This review is only for general conformance with the design concept and the information given in the Construction Documents. Corrections or comments made on the shop drawings during this review do not relieve the Contractor from compliance with the requirements of the plans and specifications. Approval of a specific item shall not include approval of an assembly of which the item is a component. The Contractor is responsible for: dimensions to be confirmed and correlated at the jobsite; information that pertains solely to the fabrication process or to the means, method, and techniques, sequences and procedures of construction; coordination of the Work with that of all other trades; and performing all Work in a safe and satisfactory manner.

Firm: Lakes Engineering, Inc.
 Date: 5/8/18
 By: mjr

TX Firm #11145

5/4/18

C	END TRUSS SECTION ADDED	SAR 5/2/18	# 5/2/18
B	UPDATED BACKWALL HEIGHT	SAR 4/17/18	# 4/17/18
A	FOR APPROVAL	SAR 3/15/18	# 3/16/18
REV	DESCRIPTION	BY/DATE	CHECKED BY

PIONEER BRIDGES

A DIVISION OF
 BAILEY BRIDGES, INC.
 119 40th Street NE
 Fort Payne, AL 35967
 1-866-708-5778

PROJECT: FAIRVIEW PEDESTRIAN BRIDGE	DRAWN BY: SAR
OWNER: CITY OF FAIRVIEW	APPROVED BY: RGG
ADDRESS: FAIRVIEW, TX	CHECKED BY: AF
CONTRACTOR: -	
DESCRIPTION: 10' X 150' CORNERSTONE PEDESTRIAN BRIDGE	

THIS BRIDGE STRUCTURE SHALL NOT BE FIELD MODIFIED IN ANY WAY WITHOUT THE CONSENT AND APPROVAL OF PIONEER BRIDGES. THESE DRAWINGS ARE THE PROPERTY OF PIONEER BRIDGES AND ARE NOT TO BE COPIED OR USED IN ANY WAY DETRIMENTAL WITHOUT THEIR WRITTEN CONSENT.

JOB NO: 18431P

SHEET: 2 OF 3

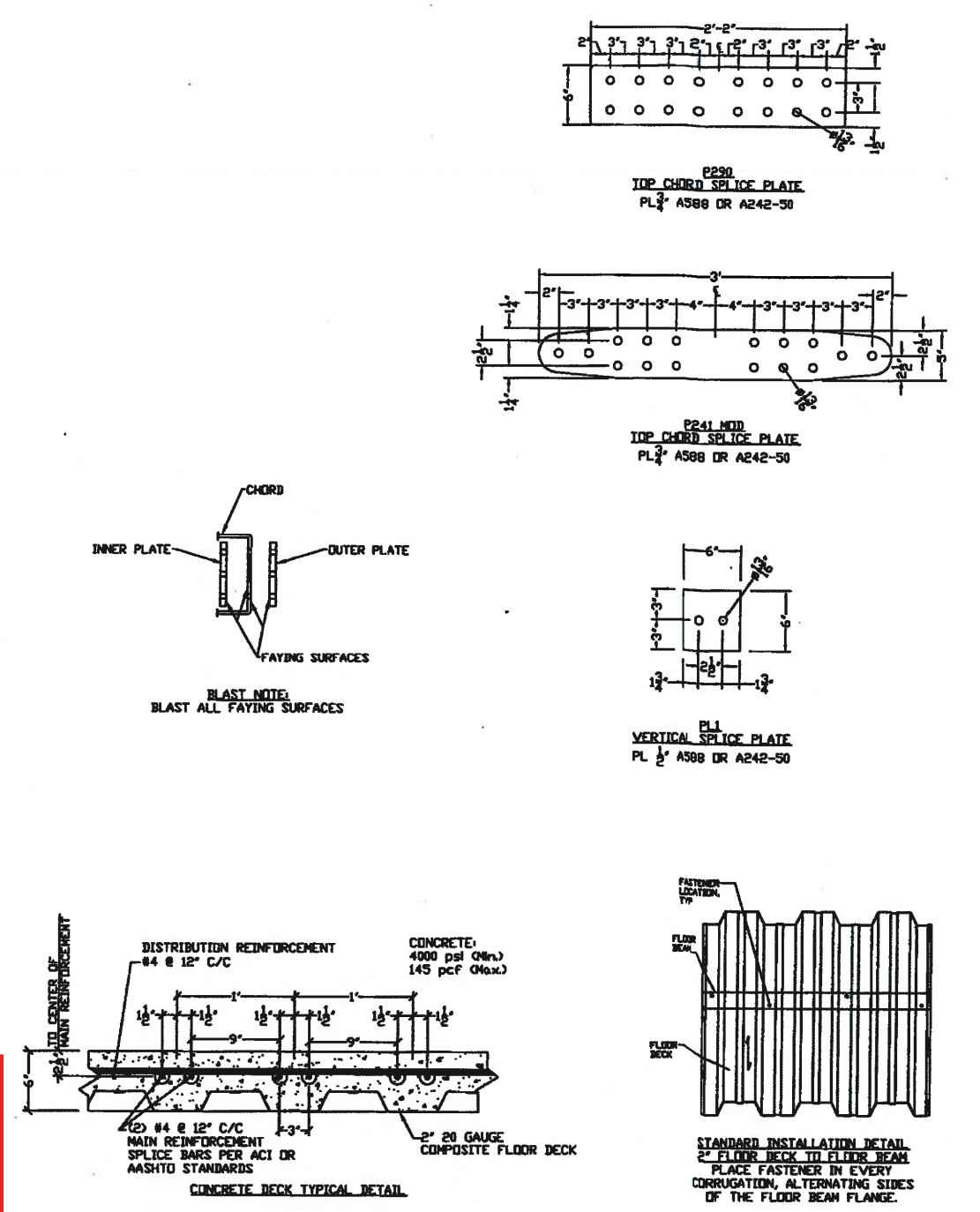
REV. C

Material Schedule (A588, A242-50, A947) 1 BRIDGE 10' x 150'		
Pc. Mk	Quantity	Description
TC1	2	HSS8X8X3/8
TC1A/TC1B	4	HSS8X8X3/8
BC1	2	HSS8X8X3/8
V1	2	HSS8X4X1/4
V2	2	HSS8X4X1/4
V3	2	HSS8X4X1/4
V4	2	HSS8X4X1/4
V5	2	HSS8X4X1/4
V6	2	HSS8X4X1/4
V7	2	HSS8X4X1/4
V8	2	HSS8X4X1/4
V9	2	HSS8X4X1/4
V10	4	C8X11.5
V11	2	HSS8X4X1/4
V12	2	HSS8X4X1/4
V13	2	HSS8X4X1/4
V14	2	HSS8X4X1/4
V15	2	HSS8X4X1/4
V16	2	HSS8X4X1/4
V17	2	HSS8X4X1/4
V18	2	HSS8X4X1/4
V19	2	HSS8X4X1/4
D1	2	HSS6X4X1/4
D2	2	HSS6X4X1/4
D3	2	HSS4X4X1/4
D4	2	HSS4X4X1/4
D5	2	HSS4X4X1/4
D6	2	HSS4X4X1/4
D7	2	HSS4X4X1/4
D8	2	HSS4X4X1/4
D9	2	HSS4X4X1/4
D10	2	HSS4X4X1/4
D11	2	HSS4X4X1/4
D12	2	HSS4X4X1/4
D13	2	HSS4X4X1/4
D14	2	HSS4X4X1/4
D15	2	HSS4X4X1/4
D16	2	HSS4X4X1/4
D17	2	HSS4X4X1/4
D18	2	HSS4X4X1/4
D19	2	HSS6X4X1/4
D20	2	HSS6X4X1/4
R1	4	L1 1/2X1 1/2X3/16
R2	10	L1 1/2X1 1/2X3/16
R3	4	L1 1/2X1 1/2X3/16
FB1	2	WB31
FB2	18	W12X19
FB3	2	C10X15.3
FD1	18	HSS4X2X1/4
FD2	2	HSS4X2X1/4
FLR DECK 1	16	2IN. 20GA CFD
FLR DECK 2	16	2IN. 20GA CFD
DECK FASTENERS	242	HILTI FASTENERS
CF1	2	C6X8.2
CF2	2	C6X8.2
P290	8	PL3/4X5
P241 MOD	8	PL3/4X5
PL1	8	PL1/2X6
BP1	4	PL 1/2 X 10
TEFLON	4	PL1/8X9
SP1	4	PL 1/2 X 10
BOL.NUT/W	27	Ø3/4x 1 3/4 A325 TYPE 3
BOL.NUT/W	128	Ø3/4x 3 1/4 A325 TYPE 3
BOL.NUT/W	8	Ø3/4x 2 3/4 A325 TYPE 3

Approved Revise and Resubmit
 Rejected Furnish as Corrected
 No Exception Submit Specified Item

This review is only for general conformance with the design concept and the information given in the Construction Documents. Corrections or comments made on the shop drawings during this review do not relieve the Contractor from compliance with the requirements of the plans and specifications. Approval of a specific item shall not include approval of an assembly of which the item is a component. The Contractor is responsible for: dimensions to be confirmed and correlated at the jobsite; information that pertains solely to the fabrication process or to the means, method, and techniques, sequences and procedures of construction; coordination of the Work with that of all other trades; and performing all Work in a safe and satisfactory manner.

Firm: Lakes Engineering, Inc.
 Date: 5/8/18
 By: MRR



TX Firm #11145

NO CHANGES THIS SHEET
 BOM UPDATED
 FOR APPROVAL

REV. NO. DESCRIPTION BY/DATE CHECKED BY
 C SAR 5/2/18 AF 5/2/18
 B SAR 4/17/18 AF 4/17/18
 A SAR 3/15/18 MWR 3/15/18

PIONEER BRIDGES
 A DIVISION OF BAILEY BRIDGES, INC.
 119 48th Street NE
 Fort Payne, AL 35967
 1-866-708-5778

PROJECT: FAIRVIEW PEDESTRIAN BRIDGE
 DRAWN BY: SAR
 OWNER: CITY OF FAIRVIEW
 APPROVED BY: RGG
 ADDRESS: FAIRVIEW, TX
 CONTRACTOR: -
 CHECKED BY: AF
 DESCRIPTION: 10' X 150' CORNERSTONE PEDESTRIAN BRIDGE

THIS BRIDGE STRUCTURE SHALL NOT BE FIELD MODIFIED IN ANY WAY WITHOUT THE CONSENT AND APPROVAL OF PIONEER BRIDGES. THESE DRAWINGS ARE THE PROPERTY OF PIONEER BRIDGES AND ARE NOT TO BE COPIED OR USED IN ANY WAY DETRIMENTAL WITHOUT THEIR WRITTEN CONSENT.

JOB NO: 18431P
 SHEET: 3 OF 3

REGISTERED PROFESSIONAL ENGINEER
 ROBERT G. GRAHAM, III
 82266
 5/4/18