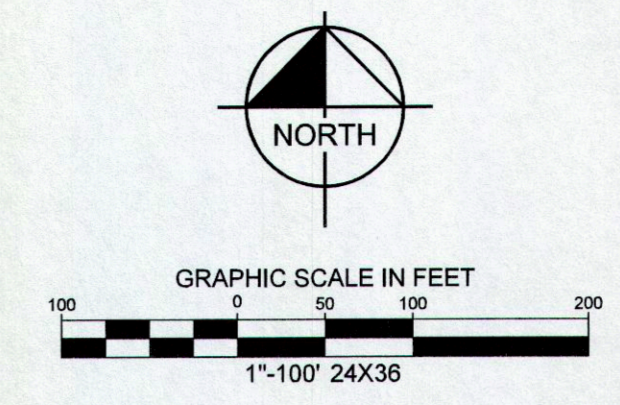


BENCH MARK LIST

- BM#1** TXDOT CONTROL POINT NO. E0430313 BEING A 2-INCH ALUMINUM DISK STAMPED "TXDOT DALLAS GPS E0430313" FOUND IN CONCRETE, ±51 FEET WEST OF STATE HIGHWAY 5 AT FANNIN ROAD.
ELEV=661.43
- BM#2** TXDOT CONTROL POINT NO. E0430261 BEING A 4-INCH ALUMINUM DISK FOUND IN THE GRASS ±54 FEET NORTH FROM NORTHEAST CORNER OF BIBLE CHURCH SIGN, ±73 FEET SOUTHEAST FROM TELEPHONE PEDESTAL, ±90.5 FEET SOUTH FROM CR 377/1375 SIGN AND ±241 FEET NORTH FROM THE CENTER OF COUNTY ROAD 375.
ELEV=762.84
- BM#3** SQUARE CUT WITH "X" CUT SET ON NORTHEAST CORNER OF CONCRETE HEADWALL LOCATED ±13 FEET WEST OF GREENVILLE DRIVE AND ±1290 FEET NORTH OF STACY ROAD.
ELEV=644.21
- BM#4** BENCH TIE NAIL SET IN NORTH SIDE OF POWER POLE LOCATED ±16 FEET WEST OF GREENVILLE DRIVE AND ±54 FEET NORTH OF STACY ROAD.
ELEV=673.51
- BM#5** SQUARE CUT ON NORTHEAST CORNER OF CURB INLET ON THE NORTH SIDE OF FRISCO ROAD, ±430 FEET WEST OF THE INTERSECTION OF FRISCO ROAD AND GREENVILLE DRIVE, ±755 FEET EAST OF INTERSECTION OF FRISCO ROAD AND MEDICAL CENTER DRIVE.
ELEV=632.28
- BM#6** SQUARE CUT ON BACK OF CURB INLET ON THE SOUTHEAST SIDE OF CENTRAL EXPRESSWAY, ±75 FEET NORTHEAST OF THE INTERSECTION OF CENTRAL EXPRESSWAY AND FRISCO ROAD.
ELEV=660.64
- BM#7** SQUARE CUT ON SOUTH CORNER OF CURB INLET ON THE SOUTHEAST SIDE OF FAIRVIEW PARKWAY, ±320 FEET SOUTHWEST FROM THE INTERSECTION OF FAIRVIEW PARKWAY AND RIDGEVIEW DRIVE.
ELEV=642.22



NOTES:

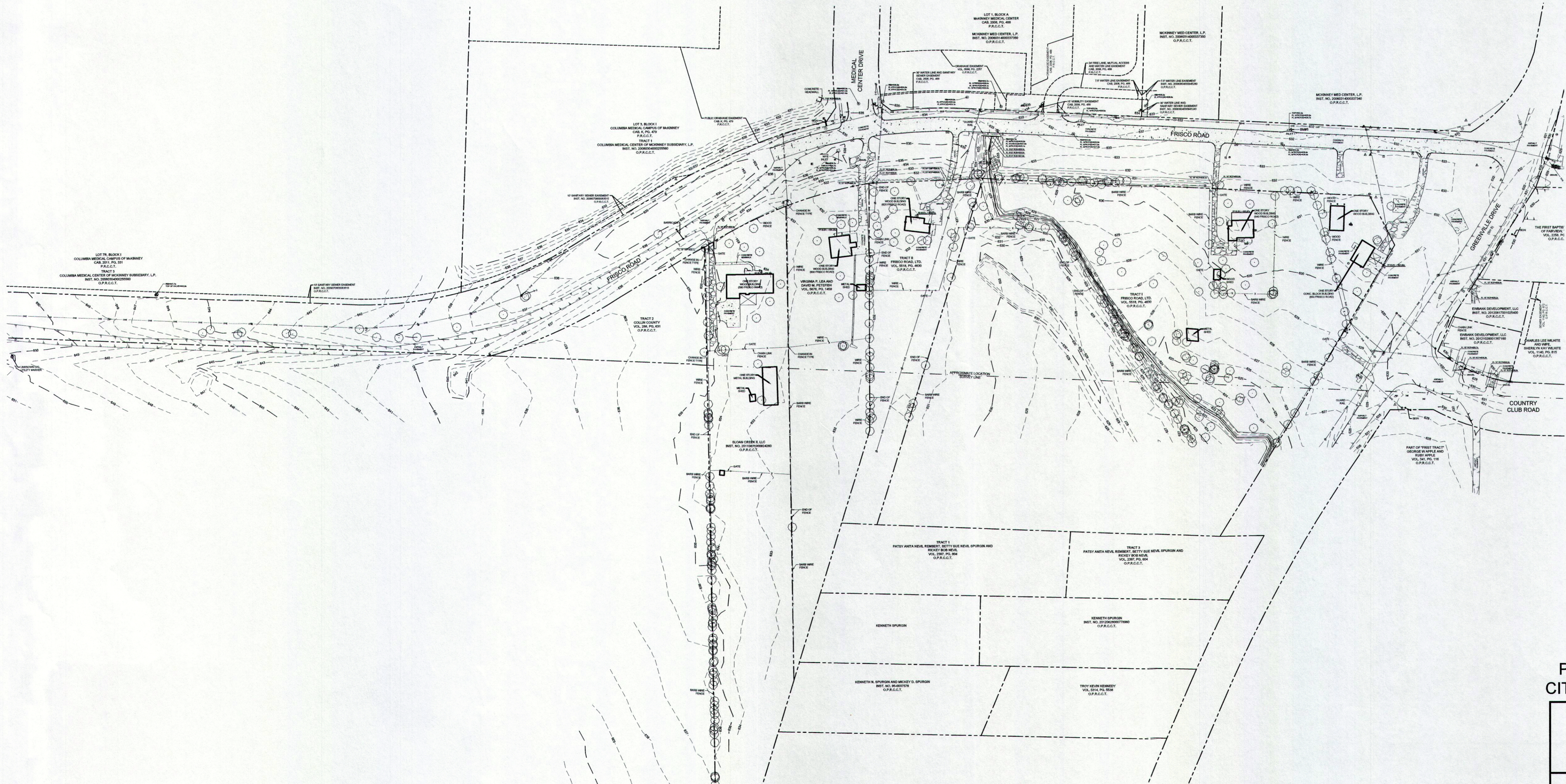
All bearings shown are based on grid north of the Texas Coordinate System of 1983, North Central Zone (4202), North American Datum of 1983. All dimensions shown are ground distances.

The property is shown on Map No. 48085C0270J, Community Panel No. 481069 0270 J, dated June 2, 2009 of the National Flood Insurance Program Map, Flood Insurance Rate Map of Collin County, Texas, Federal Emergency Management Agency, Federal Insurance Administration.

The surveyor did not abstract the surveyed property. This survey was performed without the benefit of a current title abstract.

LEGEND

(R) ROOF DRAIN	(MB) MAIL BOX
(TV) CABLE TV BOX	(NS) NEWS STAND
(C) CABLE TV HANDHOLE	(FS) FIBER OPTIC SIGN
(M) CABLE TV MANHOLE	(SC) SECURITY CAMERA
(F) CABLE TV MARKER FLAG	(TB) TRASH BIN
(SM) CABLE TV MARKER SIGN	(SB) SANITARY SEWER BOX
(V) CABLE TV VAULT	(SCU) SANITARY SEWER CLEAN OUT
(CB) COMMUNICATIONS BOX	(SMH) SANITARY SEWER MANHOLE
(CMH) COMMUNICATIONS MANHOLE	(SLS) SANITARY SEWER LIFT STATION
(CMF) COMMUNICATIONS MARKER FLAG	(SM) SANITARY SEWER METER
(CMS) COMMUNICATIONS MARKER SIGN	(SMH) SANITARY SEWER MANHOLE
(CV) COMMUNICATIONS VAULT	(SMF) SANITARY SEWER MARKER FLAG
(EB) ELEVATION BENCHMARK	(SMR) SANITARY SEWER MARKER SIGN
(FD) FLOW DIRECTION	(ST) SANITARY SEWER VAULT
(FO) FIBER OPTIC BOX	(SS) STORM SEWER BOX
(FH) FIBER OPTIC HANDHOLE	(SD) STORM SEWER DRAIN
(FM) FIBER OPTIC MANHOLE	(SH) STORM SEWER HANDHOLE
(FMR) FIBER OPTIC MARKER FLAG	(SM) STORM SEWER METER
(FMS) FIBER OPTIC MARKER SIGN	(SMH) STORM SEWER MANHOLE
(FV) FIBER OPTIC VAULT	(SMF) STORM SEWER MARKER FLAG
(M) MONITORING WELL	(SMR) STORM SEWER MARKER SIGN
(FT) FUEL TANK	(STV) STORM SEWER VAULT
(GB) GAS BOX	(TB) TRAFFIC BARRIER
(GH) GAS HANDHOLE	(TB) TRAFFIC BOLLARD
(GM) GAS METER	(TB) TRAFFIC BOX
(G) GAS MANHOLE	(CS) CROSS WALK SIGNAL
(GMS) GAS MARKER SIGN	(TH) TRAFFIC HANDHOLE
(GS) GAS SIGN	(TM) TRAFFIC MANHOLE
(GT) GAS TANK	(TMS) TRAFFIC MARKER SIGN
(GV) GAS VAULT	(TC) TRAFFIC CAMERA
(GVS) GAS VALVE	(TS) TRAFFIC SENSOR
(GW) GAS WELL	(TS) TRAFFIC SIGNAL
(TB) TELEPHONE BOX	(TV) TRAFFIC VAULT
(TH) TELEPHONE HANDHOLE	(U) UNIDENTIFIED BOX
(TM) TELEPHONE MANHOLE	(UH) UNIDENTIFIED HANDHOLE
(TMS) TELEPHONE MARKER SIGN	(UM) UNIDENTIFIED METER
(TV) TELEPHONE VAULT	(U) UNIDENTIFIED MANHOLE
(P) PIPELINE	(UMF) UNIDENTIFIED MARKER FLAG
(PH) PIPELINE HANDHOLE	(U) UNIDENTIFIED MARKER SIGN
(PM) PIPELINE METER	(UP) UNIDENTIFIED POLE
(PMA) PIPELINE MANHOLE	(UT) UNIDENTIFIED TANK
(PMF) PIPELINE MARKER FLAG	(UV) UNIDENTIFIED VALVE
(PMS) PIPELINE MARKER SIGN	(T) TREE
(PV) PIPELINE VAULT	(W) WATER BOX
(P) PIPELINE VALVE	(WDC) WATER DEPT. CONNECTION
(EB) ELECTRIC BOX	(WH) WATER HAND HOLE
(EM) ELECTRIC MANHOLE	(W) WATER METER
(E) ELECTRIC METER	(WM) WATER MANHOLE
(EMF) ELECTRIC MARKER FLAG	(WMS) WATER MARKER FLAG
(EMS) ELECTRIC MARKER SIGN	(WMS) WATER MARKER SIGN
(EP) ELECTRIC POLE	(WT) WATER TANK
(E) ELECTRIC SWITCH	(WV) WATER VAULT
(ET) ELECTRIC TRANSFORMER	(W) WATER VALVE
(EV) ELECTRIC VAULT	(WR) WATER RELEASE VALVE
(P) PARKING	(W) WATER WELL
(H) HANDICAPPED PARKING	(R) IRON ROD W/ "X" CAP SET
(PK) PARKING METER	(R) IRON ROD WITH CAP FOUND
(RS) RAILROAD BOX	(PK) PK MAIL SET
(RH) RAILROAD HANDHOLE	(PKF) PK MAIL FOUND
(RS) RAILROAD SIGNAL	(RF) RAILROAD FOUND
(RS) RAILROAD SIGN	(XS) "X" CUT IN CONCRETE SET
(RV) RAILROAD VAULT	(XF) "X" CUT IN CONCRETE FOUND
(S) SIGN	(P.O.B.) POINT OF BEGINNING
(SB) SIGN BOARD	(P.O.C.) POINT OF COMMENCING
(M) MARQUEE/BILLBOARD	
(AC) A/C UNIT	
(B) BASKET BALL GOAL	
(L) BORE LOCATION	
(F) FLAG POLE	
(G) GOAL POST	
(T) GREASE TRAP	
(I) IRRIGATION VALVE	



TOPOGRAPHIC SURVEY
 PROPOSED FAIRVIEW PARKWAY NORTH
 CITY OF FAIRVIEW, COLLIN COUNTY, TEXAS

Kimley»Horn

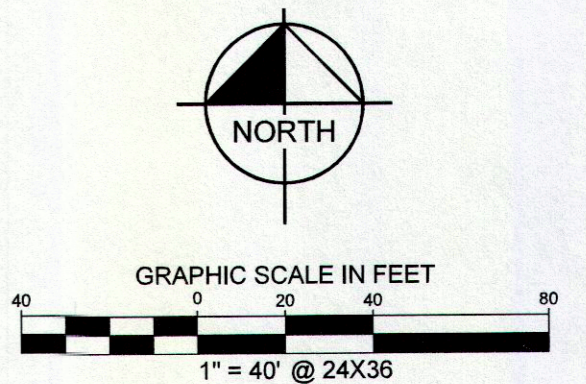
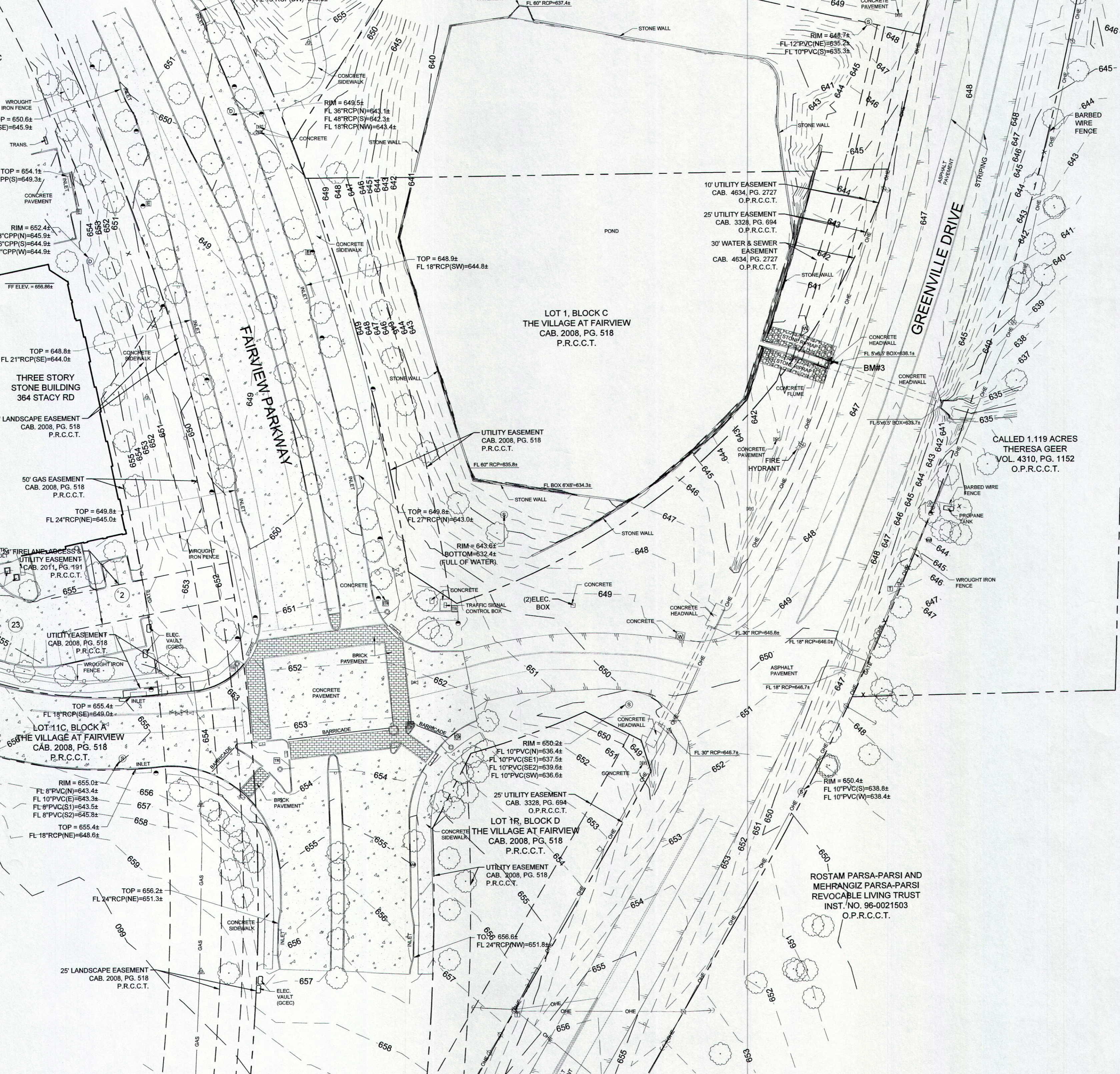
12750 Merit Drive, Suite 1000 Dallas, Texas 75251 FIRM # 10115500 Tel. No. (972) 770-1300 Fax No. (972) 239-3820

Scale	Drawn by	Checked by	Date	Project No.	Sheet No.
1" = 100'	JAD	DAB	OCT. 2015	081182003	4 OF 4

LEGEND	
1	ROOF DRAIN
2	CABLE TV BOX
3	CABLE TV HANDHOLE
4	CABLE TV MANHOLE
5	CABLE TV MARKER FLAG
6	CABLE TV MARKER SIGN
7	CABLE TV VAULT
8	COMMUNICATIONS BOX
9	COMMUNICATIONS HANDHOLE
10	COMMUNICATIONS MANHOLE
11	COMMUNICATIONS MARKER FLAG
12	COMMUNICATIONS MARKER SIGN
13	COMMUNICATIONS VAULT
14	ELEVATION BENCHMARK
15	FLOW DIRECTION
16	FIBER OPTIC BOX
17	FIBER OPTIC HANDHOLE
18	FIBER OPTIC MANHOLE
19	FIBER OPTIC MARKER FLAG
20	FIBER OPTIC MARKER SIGN
21	FIBER OPTIC VAULT
22	FUEL TANK
23	GAS BOX
24	GAS HANDHOLE
25	GAS MANHOLE
26	GAS MARKER FLAG
27	GAS SIGN
28	GAS TANK
29	GAS VAULT
30	GAS VALVE
31	GAS WELL
32	TELEPHONE BOX
33	TELEPHONE HANDHOLE
34	TELEPHONE MANHOLE
35	TELEPHONE MARKER FLAG
36	TELEPHONE MARKER SIGN
37	TELEPHONE VAULT
38	PIPELINE BOX
39	PIPELINE HANDHOLE
40	PIPELINE MANHOLE
41	PIPELINE MARKER FLAG
42	PIPELINE MARKER SIGN
43	PIPELINE VAULT
44	PIPELINE VALVE
45	ELECTRIC BOX
46	FLOOD LIGHT
47	GUY ANCHOR
48	GUY ANCHOR POLE
49	ELECTRIC MANHOLE
50	LIGHT STANDARD
51	ELECTRIC METER
52	ELECTRIC MANHOLE
53	ELECTRIC MARKER FLAG
54	ELECTRIC MARKER SIGN
55	UTILITY POLE
56	ELECTRIC TRANSFORMER
57	ELECTRIC VAULT
58	HANDICAPPED PARKING
59	PARKING METER
60	RAILROAD BOX
61	RAILROAD HANDHOLE
62	RAILROAD SIGNAL
63	RAILROAD SIGN
64	RAILROAD VAULT
65	RAILROAD VALVE
66	RAILROAD W/TH CAP FOUND
67	RAILROAD W/TH CAP FOUND
68	RAILROAD W/TH CAP FOUND
69	RAILROAD W/TH CAP FOUND
70	RAILROAD W/TH CAP FOUND
71	RAILROAD W/TH CAP FOUND
72	RAILROAD W/TH CAP FOUND
73	RAILROAD W/TH CAP FOUND
74	RAILROAD W/TH CAP FOUND
75	RAILROAD W/TH CAP FOUND
76	RAILROAD W/TH CAP FOUND
77	RAILROAD W/TH CAP FOUND
78	RAILROAD W/TH CAP FOUND
79	RAILROAD W/TH CAP FOUND
80	RAILROAD W/TH CAP FOUND
81	RAILROAD W/TH CAP FOUND
82	RAILROAD W/TH CAP FOUND
83	RAILROAD W/TH CAP FOUND
84	RAILROAD W/TH CAP FOUND
85	RAILROAD W/TH CAP FOUND
86	RAILROAD W/TH CAP FOUND
87	RAILROAD W/TH CAP FOUND
88	RAILROAD W/TH CAP FOUND
89	RAILROAD W/TH CAP FOUND
90	RAILROAD W/TH CAP FOUND
91	RAILROAD W/TH CAP FOUND
92	RAILROAD W/TH CAP FOUND
93	RAILROAD W/TH CAP FOUND
94	RAILROAD W/TH CAP FOUND
95	RAILROAD W/TH CAP FOUND
96	RAILROAD W/TH CAP FOUND
97	RAILROAD W/TH CAP FOUND
98	RAILROAD W/TH CAP FOUND
99	RAILROAD W/TH CAP FOUND
100	RAILROAD W/TH CAP FOUND

LOT 10-A, BLOCK A
DAVIS DEVELOPMENT ADDITION
CAB. 2011, PG. 191
P.R.C.C.T.

CARRINGTON FAIRVIEW PARTNERS, LLC
INST. NO. 20100406000327760
O.P.R.C.C.T.



BENCH MARK LIST	
BM#1	TXDOT CONTROL POINT NO. E0430313 BEING A 2-INCH ALUMINUM DISK STAMPED "TXDOT DALLAS GPS E0430313" FOUND IN CONCRETE, ±51 FEET WEST OF STATE HIGHWAY 5 AT FANNIN ROAD. ELEV=661.43
BM#2	TXDOT CONTROL POINT NO. E0430261 BEING A 4-INCH ALUMINUM DISK FOUND IN THE GRASS ±54 FEET NORTH FROM NORTHEAST CORNER OF BIBLE CHURCH SIGN, ±73 FEET SOUTHWEST FROM TELEPHONE PEDESTAL, ±90.5 FEET SOUTH FROM CR 377/1375 SIGN AND ±241 FEET NORTH FROM THE CENTER OF CITY ROAD 375. ELEV=762.64
BM#3	SQUARE CUT WITH "X" CUT SET ON NORTHEAST CORNER OF CONCRETE HEADWALL LOCATED ±13 FEET WEST OF GREENVILLE DRIVE AND ±1290 FEET NORTH OF STACY ROAD. ELEV=644.21
BM#4	BENCH TIE NAIL SET IN NORTH SIDE OF POWER POLE LOCATED ±16 FEET WEST OF GREENVILLE DRIVE AND ±54 FEET NORTH OF STACY ROAD. ELEV=673.51
BM#5	SQUARE CUT ON NORTHEAST CORNER OF CURB INLET ON THE NORTH SIDE OF FRISCO ROAD, ±430 FEET WEST OF THE INTERSECTION OF FRISCO ROAD AND GREENVILLE DRIVE, ±755 FEET EAST OF INTERSECTION OF FRISCO ROAD AND MEDICAL CENTER DRIVE. ELEV=632.28
BM#6	SQUARE CUT ON BACK OF CURB INLET ON THE SOUTHWEST SIDE OF CENTRAL EXPRESSWAY, ±75 FEET NORTHEAST OF THE INTERSECTION OF CENTRAL EXPRESSWAY AND FRISCO ROAD. ELEV=660.64
BM#7	SQUARE CUT ON SOUTH CORNER OF CURB INLET ON THE SOUTHWEST SIDE OF FAIRVIEW PARKWAY, ±320 FEET SOUTHWEST FROM THE INTERSECTION OF FAIRVIEW PARKWAY AND RIDGEVIEW DRIVE. ELEV=642.22

NOTES:

All bearings shown are based on grid north of the Texas Coordinate System of 1983, North Central Zone (4202), North American Datum of 1983. All dimensions shown are ground distances.

The property is shown on Map No. 48085C0270J, Community Panel No. 481069 0270 J, dated June 2, 2009 of the National Flood Insurance Program Map, Flood Insurance Rate Map of Collin County, Texas, Federal Emergency Management Agency, Federal Insurance Administration.

The surveyor did not abstract the surveyed property. This survey was performed without the benefit of a current title abstract.

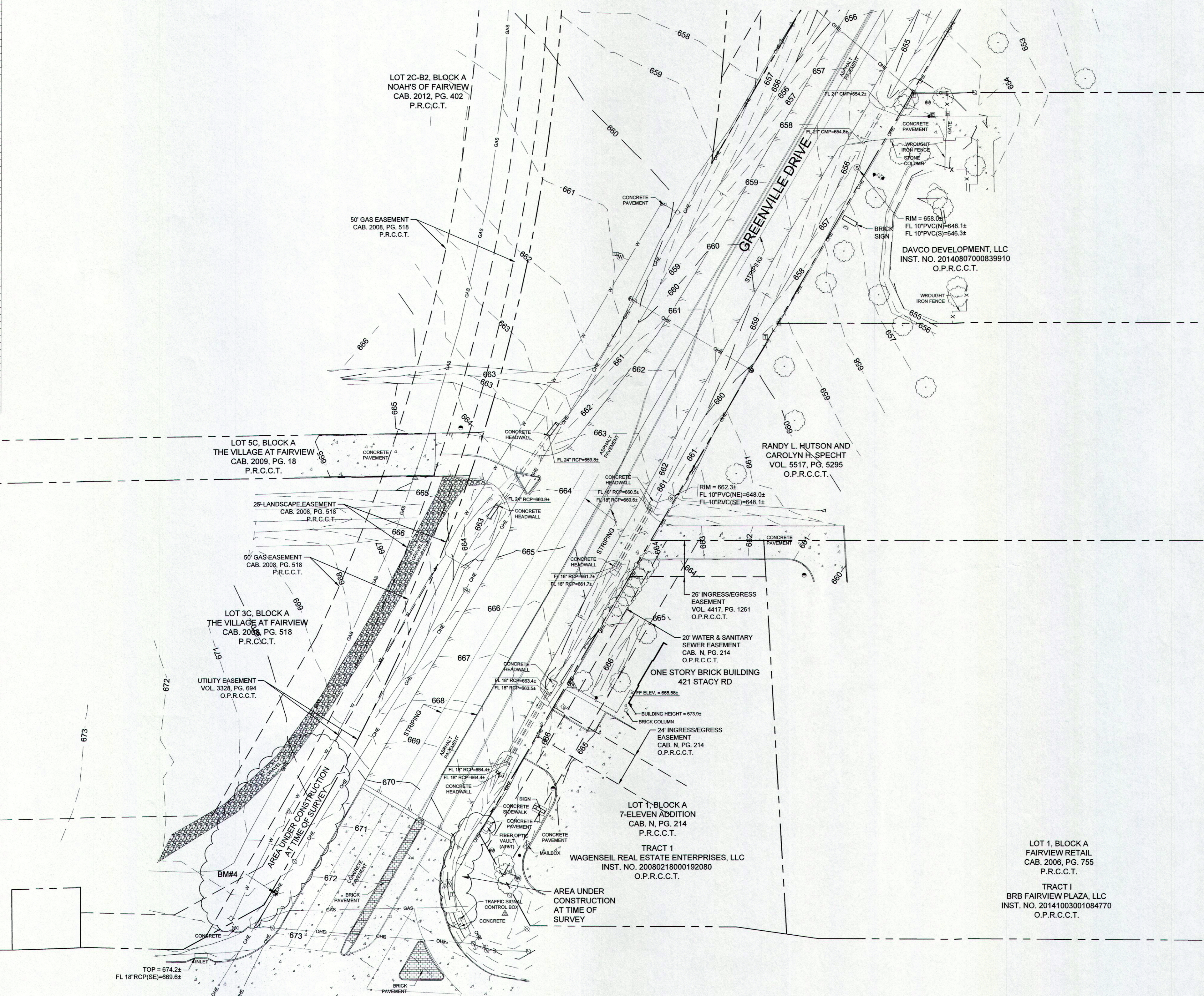
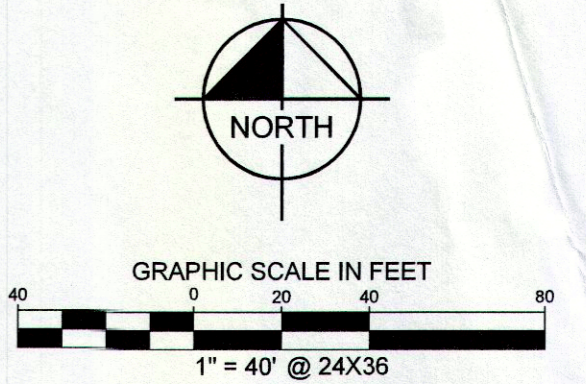
TOPOGRAPHIC SURVEY
PROPOSED FAIRVIEW PARKWAY SOUTH
CITY OF FAIRVIEW, COLLIN COUNTY, TEXAS

Kimley»Horn

12750 Merit Drive, Suite 1000 Dallas, Texas 75251 FIRM # 10115500 Tel. No. (972) 770-1300 Fax No. (972) 239-3820

Scale	Drawn by	Checked by	Date	Project No.	Sheet No.
1" = 40'	CJG/JAD	DAB	OCT. 2015	061182003	1 OF 1

LEGEND	
RD	ROOF DRAIN
TV	CABLE TV BOX
CH	CABLE TV HANDHOLE
TM	CABLE TV MANHOLE
TF	CABLE TV MARKER FLAG
TS	CABLE TV MARKER SIGN
TV	CABLE TV VAULT
CB	COMMUNICATIONS BOX
CH	COMMUNICATIONS HANDHOLE
CM	COMMUNICATIONS MANHOLE
CF	COMMUNICATIONS MARKER FLAG
CS	COMMUNICATIONS MARKER SIGN
CV	COMMUNICATIONS VAULT
EB	ELEVATION BENCHMARK
FD	FLOW DIRECTION
FB	FIBER OPTIC BOX
FH	FIBER OPTIC HANDHOLE
FM	FIBER OPTIC MANHOLE
FF	FIBER OPTIC MARKER FLAG
FS	FIBER OPTIC MARKER SIGN
FW	FIBER OPTIC VAULT
MT	MONITORING WELL
FT	FUEL TANK
GB	GAS BOX
GH	GAS HANDHOLE
GM	GAS METER
GN	GAS MANHOLE
GF	GAS MARKER FLAG
GS	GAS SIGN
GT	GAS TANK
GV	GAS VAULT
GV	GAS VALVE
GW	GAS WELL
TB	TELEPHONE BOX
TH	TELEPHONE HANDHOLE
TM	TELEPHONE MANHOLE
TF	TELEPHONE MARKER FLAG
TS	TELEPHONE MARKER SIGN
TV	TELEPHONE VAULT
PB	PIPELINE BOX
PH	PIPELINE HANDHOLE
PM	PIPELINE MANHOLE
PF	PIPELINE MARKER FLAG
PS	PIPELINE MARKER SIGN
PV	PIPELINE VAULT
PV	PIPELINE VALVE
EB	ELECTRIC BOX
EH	ELECTRIC HANDHOLE
EM	ELECTRIC MANHOLE
EF	ELECTRIC MARKER FLAG
ES	ELECTRIC MARKER SIGN
UP	UTILITY POLE
ES	ELECTRIC SWITCH
ET	ELECTRIC TRANSFORMER
EV	ELECTRIC VAULT
HP	HANDICAPPED PARKING
PM	PARKING METER
RB	RAILROAD BOX
RH	RAILROAD HANDHOLE
RS	RAILROAD SIGNAL
RS	RAILROAD SIGN
RV	RAILROAD VAULT
SI	SIGN
MB	MARQUEE/BILLBOARD
AL	A/C UNIT
BC	BASKET BALL GOAL
BL	BORE LOCATION
FP	FLAG POLE
GP	GOAL POST
GT	GREASE TRAP
IV	IRRIGATION VALVE
MB	MAIL BOX
NS	NEWS STAND
PB	PHONE BOOTH
SC	SECURITY CAMERA
TB	TRASH BIN
SS	SANITARY SEWER BOX
SS	SANITARY SEWER CLEAN OUT
SS	SANITARY SEWER HANDHOLE
SS	SANITARY SEWER LIFT STATION
SS	SANITARY SEWER METER
SS	SANITARY SEWER MANHOLE
SS	SANITARY SEWER MARKER FLAG
SS	SANITARY SEWER MARKER SIGN
SS	SANITARY SEWER SEPTIC TANK
SS	SANITARY SEWER VAULT
SS	STORM SEWER BOX
SS	STORM SEWER DRAIN
SS	STORM SEWER HANDHOLE
SS	STORM SEWER METER
SS	STORM SEWER MANHOLE
SS	STORM SEWER MARKER FLAG
SS	STORM SEWER MARKER SIGN
SS	STORM SEWER VAULT
SS	TRAFFIC BOLLARD
SS	TRAFFIC BOX
SS	CROSS WALK SIGNAL
SS	TRAFFIC HANDHOLE
SS	TRAFFIC MANHOLE
SS	TRAFFIC MARKER SIGN
SS	TRAFFIC CAMERA
SS	TRAFFIC SENSOR
SS	TRAFFIC VAULT
SS	UNIDENTIFIED BOX
SS	UNIDENTIFIED HANDHOLE
SS	UNIDENTIFIED METER
SS	UNIDENTIFIED MANHOLE
SS	UNIDENTIFIED MARKER FLAG
SS	UNIDENTIFIED MARKER SIGN
SS	UNIDENTIFIED POLE
SS	UNIDENTIFIED TANK
SS	UNIDENTIFIED VAULT
SS	UNIDENTIFIED VALVE
SS	TREE
SS	WATER BOX
SS	FIRE DEPT. CONNECTION
SS	WATER HAND HOLE
SS	FIRE HYDRANT
SS	WATER METER
SS	WATER MANHOLE
SS	WATER MARKER FLAG
SS	WATER MARKER SIGN
SS	WATER TANK
SS	WATER VAULT
SS	WATER VALVE
SS	AIR RELEASE VALVE
SS	WATER WELL
SS	5/8" IRON ROD W/ "X" CAP SET
SS	IRON ROD WITH CAP FOUND
SS	PK NAIL SET
SS	PK NAIL FOUND
SS	IRON ROD FOUND
SS	"X" CUT IN CONCRETE SET
SS	"X" CUT IN CONCRETE FOUND
SS	P.O.B. POINT OF BEGINNING
SS	P.O.C. POINT OF COMMENCING



BENCH MARK LIST	
BM#1	TXDOT CONTROL POINT NO. E0430313 BEING A 2-INCH ALUMINUM DISK STAMPED "TXDOT DALLAS GPS E0430313" FOUND IN CONCRETE, ±51 FEET WEST OF STATE HIGHWAY 5 AT FANNIN ROAD. ELEV=661.43
BM#2	TXDOT CONTROL POINT NO. E0430261 BEING A 4-INCH ALUMINUM DISK FOUND IN THE GRASS ±54 FEET NORTH FROM NORTHEAST CORNER OF BIBLE CHURCH SIGN, ±73 FEET SOUTHEAST FROM TELEPHONE PEDESTAL, ±90.5 FEET SOUTH FROM CR. 377/1375 SIGN AND ±241 FEET NORTH FROM THE CENTER OF COUNTY ROAD 375. ELEV=762.64
BM#3	SQUARE CUT WITH "X" CUT SET ON NORTHEAST CORNER OF CONCRETE HEADWALL LOCATED ±13 FEET WEST OF GREENVILLE DRIVE AND ±1290 FEET NORTH OF STACY ROAD. ELEV=644.21
BM#4	BENCH TIE NAIL SET IN NORTH SIDE OF POWER POLE LOCATED ±16 FEET WEST OF GREENVILLE DRIVE AND ±54 FEET NORTH OF STACY ROAD. ELEV=673.51
BM#5	SQUARE CUT ON NORTHEAST CORNER OF CURB INLET ON THE NORTH SIDE OF FRISCO ROAD, ±430 FEET WEST OF THE INTERSECTION OF FRISCO ROAD AND GREENVILLE DRIVE, ±755 FEET EAST OF INTERSECTION OF FRISCO ROAD AND MEDICAL CENTER DRIVE. ELEV=632.28
BM#6	SQUARE CUT ON BACK OF CURB INLET ON THE SOUTHEAST SIDE OF CENTRAL EXPRESSWAY, ±75 FEET NORTHEAST OF THE INTERSECTION OF CENTRAL EXPRESSWAY AND FRISCO ROAD. ELEV=660.64
BM#7	SQUARE CUT ON SOUTH CORNER OF CURB INLET ON THE SOUTHEAST SIDE OF FAIRVIEW PARKWAY, ±320 FEET SOUTHWEST FROM THE INTERSECTION OF FAIRVIEW PARKWAY AND RIDGEVIEW DRIVE. ELEV=642.22

NOTES:

All bearings shown are based on grid north of the Texas Coordinate System of 1983, North Central Zone (4202), North American Datum of 1983. All dimensions shown are ground distances.

The property is shown on Map No. 48085C0270J, Community Panel No. 481069 0270 J, dated June 2, 2009 of the National Flood Insurance Program Map, Flood Insurance Rate Map of Collin County, Texas, Federal Emergency Management Agency, Federal Insurance Administration.

The surveyor did not abstract the surveyed property. This survey was performed without the benefit of a current title abstract.

**TOPOGRAPHIC SURVEY
PROPOSED FAIRVIEW PARKWAY SOUTH
CITY OF FAIRVIEW, COLLIN COUNTY, TEXAS**

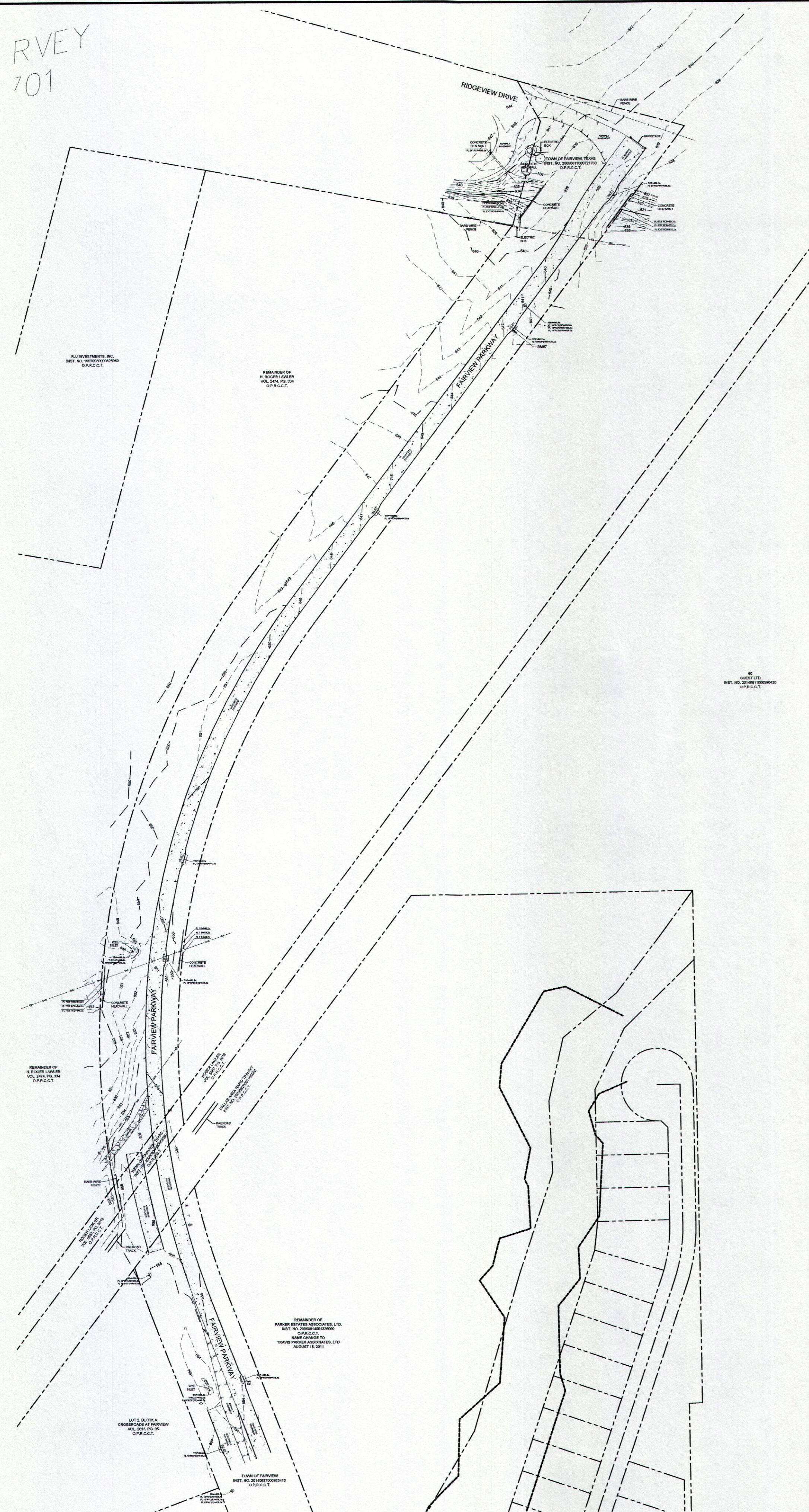
Kimley»Horn

12750 Merit Drive, Suite 1000
Dallas, Texas 75251
FIRM # 10115500
Tel. No. (972) 770-1300
Fax No. (972) 239-3820

Scale	Drawn by	Checked by	Date	Project No.	Sheet No.
1" = 40'	C/JG/JAD	DAB	OCT. 2015	061182003	1 OF 2

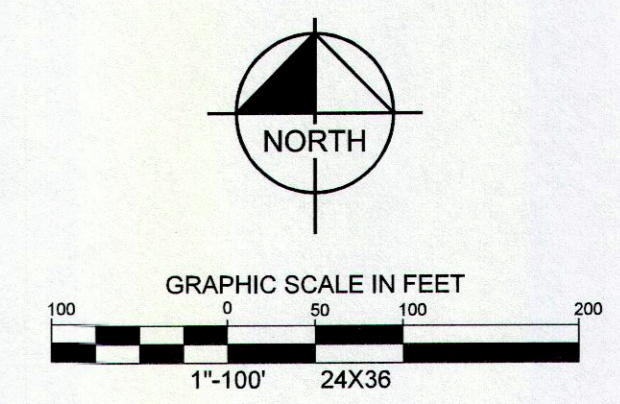
DRAWING NAME: K:\DALLAS\SURVEY\6061782003-FAIRVIEW PARKWAY SOUTH\TOPO TOPO TO ENGR\FAIRVIEW PARKWAY_TPOD_SOUTH_20151121.DWG PLOTTED BY: DDBEBS, ANDY 11/20/15 2:51 PM LAST SAVED: 11/20/15 2:49 PM

RVEY
701



LEGEND

□	ROOF DRAIN	□	MAIL BOX
□	CABLE TV BOX	□	NEWS STAND
□	CABLE TV HANDHOLE	□	PHONE BOOTH
□	CABLE TV MANHOLE	□	SECURITY CAMERA
□	CABLE TV MARKER FLAG	□	TRASH BIN
□	CABLE TV MARKER SIGN	□	SANITARY SEWER BOX
□	CABLE TV VAULT	□	SANITARY SEWER CLEAN OUT
□	COMMUNICATIONS BOX	□	SANITARY SEWER HANDHOLE
□	COMMUNICATIONS HANDHOLE	□	SANITARY SEWER LIFT STATION
□	COMMUNICATIONS MANHOLE	□	SANITARY SEWER METER
□	COMMUNICATIONS MARKER FLAG	□	SANITARY SEWER MANHOLE
□	COMMUNICATIONS MARKER SIGN	□	SANITARY SEWER MARKER FLAG
□	COMMUNICATIONS VAULT	□	SANITARY SEWER MARKER SIGN
□	ELEVATION BENCHMARK	□	SANITARY SEWER SEPTIC TANK
□	ELEVATION BENCHMARK	□	SANITARY SEWER VAULT
□	FLOW DIRECTION	□	STORM SEWER BOX
□	FIBER OPTIC BOX	□	STORM SEWER DRAWN
□	FIBER OPTIC HANDHOLE	□	STORM SEWER HANDHOLE
□	FIBER OPTIC MANHOLE	□	STORM SEWER METER
□	FIBER OPTIC MARKER FLAG	□	STORM SEWER MANHOLE
□	FIBER OPTIC MARKER SIGN	□	STORM SEWER MARKER FLAG
□	MONITORING WELL	□	STORM SEWER MARKER SIGN
□	FUEL TANK	□	STORM SEWER VAULT
□	GAS BOX	□	TRAFFIC BARRIER
□	GAS HANDHOLE	□	TRAFFIC BOLLARD
□	GAS METER	□	TRAFFIC BOX
□	GAS MANHOLE	□	CROSS WALK SIGNAL
□	GAS MARKER FLAG	□	TRAFFIC HANDHOLE
□	GAS SIGN	□	TRAFFIC MANHOLE
□	GAS TANK	□	TRAFFIC MARKER SIGN
□	GAS VAULT	□	TRAFFIC CAMERA
□	GAS VALVE	□	TRAFFIC SENSOR
□	GAS WELL	□	TRAFFIC SIGNAL
□	TELEPHONE BOX	□	TRAFFIC VAULT
□	TELEPHONE HANDHOLE	□	UNIDENTIFIED BOX
□	TELEPHONE MANHOLE	□	UNIDENTIFIED HANDHOLE
□	TELEPHONE MARKER FLAG	□	UNIDENTIFIED METER
□	TELEPHONE MARKER SIGN	□	UNIDENTIFIED MANHOLE
□	TELEPHONE VAULT	□	UNIDENTIFIED MARKER FLAG
□	PIPELINE BOX	□	UNIDENTIFIED MARKER SIGN
□	PIPELINE HANDHOLE	□	UNIDENTIFIED POLE
□	PIPELINE METER	□	UNIDENTIFIED TANK
□	PIPELINE MANHOLE	□	UNIDENTIFIED VAULT
□	PIPELINE MARKER FLAG	□	UNIDENTIFIED VALVE
□	PIPELINE MARKER SIGN	□	TREE
□	PIPELINE VAULT	□	WATER BOX
□	PIPELINE VALVE	□	FIRE DEPT. CONNECTION
□	ELECTRIC BOX	□	WATER HAND HOLE
□	FLOOD LIGHT	□	FIRE HYDRANT
□	GUY ANCHOR	□	WATER METER
□	GUY ANCHOR POLE	□	WATER MANHOLE
□	ELECTRIC MANHOLE	□	WATER MARKER FLAG
□	LIGHT STANDARD	□	WATER MARKER SIGN
□	ELECTRIC METER	□	WATER TANK
□	ELECTRIC MANHOLE	□	WATER VAULT
□	ELECTRIC MARKER FLAG	□	WATER VALVE
□	ELECTRIC MARKER SIGN	□	AIR RELEASE VALVE
□	UTILITY POLE	□	WATER WELL
□	ELECTRIC SWITCH	□	6" IRON ROD W/ "N" CAP SET
□	ELECTRIC TRANSFORMER	□	8" IRON ROD W/ "N" CAP SET
□	ELECTRIC VAULT	□	PKS PK NAIL SET
□	HANDICAPPED PARKING	□	PKF PK NAIL FOUND
□	PARKING METER	□	RFK RAILROAD FOUND
□	RAILROAD BOX	□	XS "X" CUT IN CONCRETE SET
□	RAILROAD HANDHOLE	□	XF "X" CUT IN CONCRETE FOUND
□	RAILROAD SIGNAL	□	P.O.B. POINT OF BEGINNING
□	RAILROAD SIGN	□	P.O.C. POINT OF COMMENCING
□	RAILROAD VAULT		
□	SEW		
□	MARQUEE/BILLBOARD		
□	AC UNIT		
□	BASKET BALL GOAL		
□	BORE LOCATION		
□	FLAG POLE		
□	GOAL POST		
□	GREASE TRAP		
□	IRRIGATION VALVE		



BENCH MARK LIST

BM#1	TXDOT CONTROL POINT NO. E0430313 BEING A 2-INCH ALUMINUM DISK STAMPED "TXDOT DALLAS GPS E0430313" FOUND IN CONCRETE, ±51 FEET WEST OF STATE HIGHWAY 5 AT FANNIN ROAD. ELEV=661.43
BM#2	TXDOT CONTROL POINT NO. E0430261 BEING A 4-INCH ALUMINUM DISK FOUND IN THE GRASS ±54 FEET NORTH FROM NORTHEAST CORNER OF BIBLE CHURCH SIGN, ±73 FEET SOUTHWEST FROM TELEPHONE PEDESTAL, ±90.5 FEET SOUTH FROM CR 377/1375 SIGN AND ±241 FEET NORTH FROM THE CENTER OF COUNTY ROAD 375. ELEV=762.64
BM#3	SQUARE CUT WITH "X" CUT SET ON NORTHEAST CORNER OF CONCRETE HEADWALL LOCATED ±13 FEET WEST OF GREENVILLE DRIVE AND ±1290 FEET NORTH OF STACY ROAD. ELEV=644.21
BM#4	BENCH TIE NAIL SET IN NORTH SIDE OF POWER POLE LOCATED ±16 FEET WEST OF GREENVILLE DRIVE AND ±54 FEET NORTH OF STACY ROAD. ELEV=673.51
BM#5	SQUARE CUT ON NORTHEAST CORNER OF CURB INLET ON THE NORTH SIDE OF FRISCO ROAD, ±430 FEET WEST OF THE INTERSECTION OF FRISCO ROAD AND GREENVILLE DRIVE, ±755 FEET EAST OF INTERSECTION OF FRISCO ROAD AND MEDICAL CENTER DRIVE. ELEV=632.28
BM#6	SQUARE CUT ON BACK OF CURB INLET ON THE SOUTHEAST SIDE OF CENTRAL EXPRESSWAY, ±75 FEET NORTHEAST OF THE INTERSECTION OF CENTRAL EXPRESSWAY AND FRISCO ROAD. ELEV=660.64
BM#7	SQUARE CUT ON SOUTH CORNER OF CURB INLET ON THE SOUTHEAST SIDE OF FAIRVIEW PARKWAY, ±320 FEET SOUTH-WEST FROM THE INTERSECTION OF FAIRVIEW PARKWAY AND RIDGEVIEW DRIVE. ELEV=642.22

NOTES:

All bearings shown are based on grid north of the Texas Coordinate System of 1983, North Central Zone (4202), North American Datum of 1983. All dimensions shown are ground distances.

The property is shown on Map No. 48085C0270J, Community Panel No. 481069 0270 J, dated June 2, 2009 of the National Flood Insurance Program Map, Flood Insurance Rate Map of Collin County, Texas, Federal Emergency Management Agency, Federal Insurance Administration.

The surveyor did not abstract the surveyed property. This survey was performed without the benefit of a current title abstract.

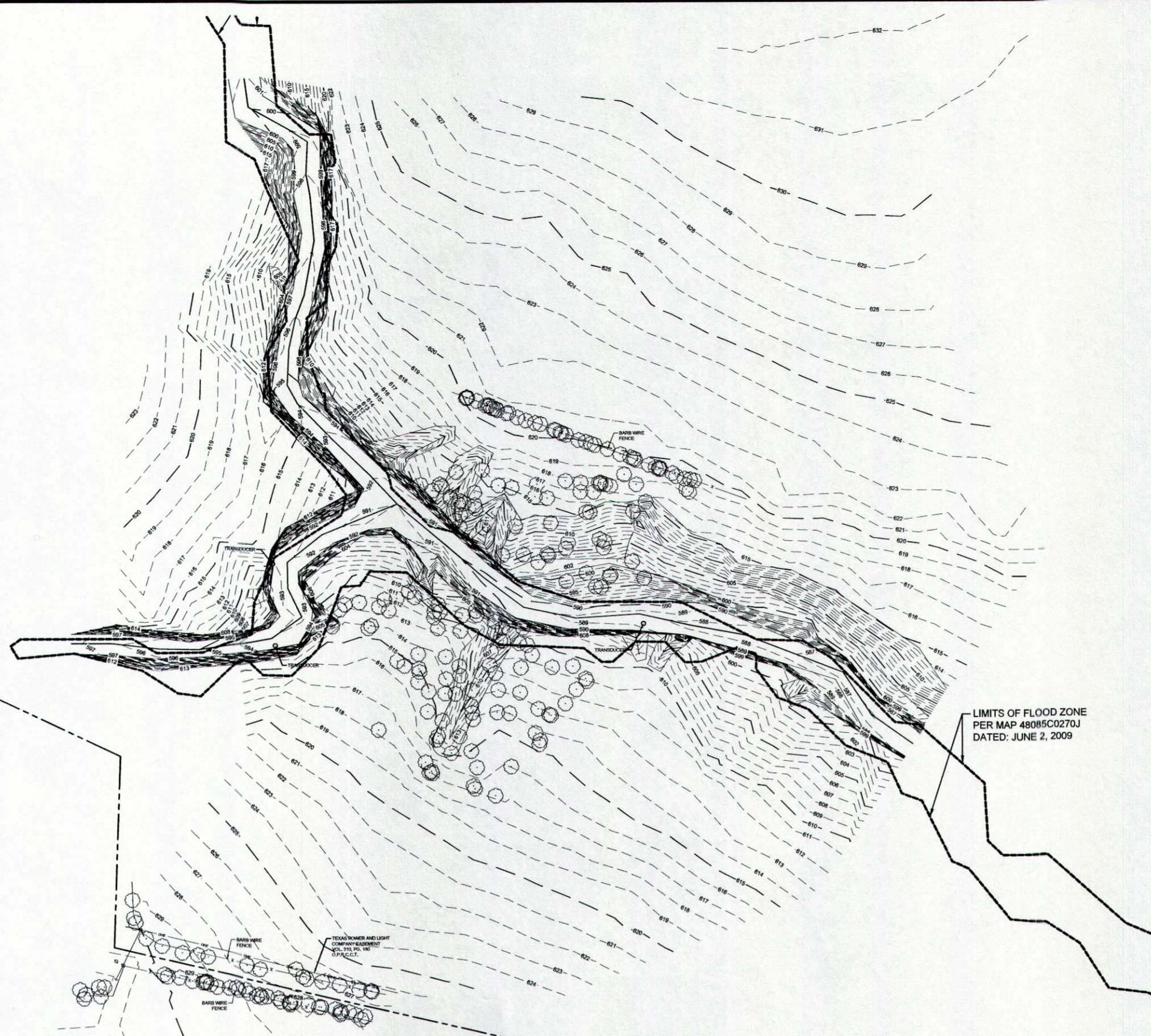
TOPOGRAPHIC SURVEY
PROPOSED FAIRVIEW PARKWAY NORTH
CITY OF FAIRVIEW, COLLIN COUNTY, TEXAS

Kimley»Horn

12750 Merit Drive, Suite 1000 Dallas, Texas 75251 FIRM # 10115500 Tel. No. (972) 770-1300 Fax No. (972) 239-3820

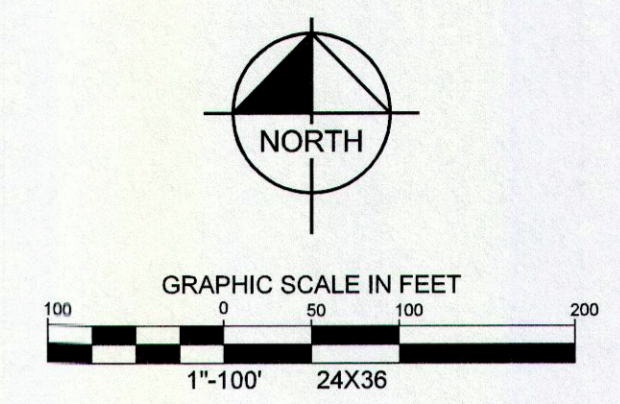
Scale	Drawn by	Checked by	Date	Project No.	Sheet No.
1" = 100'	JAD	DAB	OCT. 2015	061182003	1 OF 4

NATHAN PHILLIPS SURVEY
 ABSTRACT No. 719



LEGEND

RD	ROOF DRAIN	CS	MAIL BOX
TV	CABLE TV BOX	NS	NEWS STAND
CH	CABLE TV HANDHOLE	PS	PHONE BOOTH
TM	CABLE TV MANHOLE	SC	SECURITY CAMERA
CF	CABLE TV MARKER FLAG	TR	TRASH BIN
CM	CABLE TV MARKER SIGN	SB	SANITARY SEWER BOX
CV	CABLE TV VAULT	OC	SANITARY SEWER CLEAN OUT
CB	COMMUNICATIONS BOX	SH	SANITARY SEWER HANDHOLE
CC	COMMUNICATIONS HANDHOLE	SL	SANITARY SEWER LIFT STATION
CM	COMMUNICATIONS MANHOLE	SM	SANITARY SEWER METER
CF	COMMUNICATIONS MARKER FLAG	SH	SANITARY SEWER MANHOLE
CM	COMMUNICATIONS MARKER SIGN	SM	SANITARY SEWER MARKER SIGN
CV	COMMUNICATIONS VAULT	ST	SANITARY SEWER MARKER SIGN
EB	ELEVATION BENCHMARK	ST	SANITARY SEWER SEPTIC TANK
FD	FLOW DIRECTION	SV	SANITARY SEWER VAULT
FO	FIBER OPTIC BOX	SD	STORM SEWER BOX
FOH	FIBER OPTIC HANDHOLE	SD	STORM SEWER DRAIN
FOM	FIBER OPTIC MANHOLE	SH	STORM SEWER HANDHOLE
FOMF	FIBER OPTIC MARKER FLAG	SM	STORM SEWER METER
FOMS </td <td>FIBER OPTIC MARKER SIGN</td> <td>SH</td> <td>STORM SEWER MANHOLE</td>	FIBER OPTIC MARKER SIGN	SH	STORM SEWER MANHOLE
FOMV	FIBER OPTIC VAULT	SM	STORM SEWER MARKER SIGN
FW	MONITORING WELL	SM	STORM SEWER MARKER SIGN
FT	FUEL TANK	SV	STORM SEWER VAULT
GB	GAS BOX	TR	TRAFFIC BARRIER
GH	GAS HANDHOLE	TR	TRAFFIC BOLLARD
GM	GAS METER	TR	TRAFFIC BOX
GMF	GAS MANHOLE	TR	CROSS WALK SIGNAL
GMF	GAS MARKER FLAG	TR	TRAFFIC HANDHOLE
GS	GAS SIGN	TR	TRAFFIC MANHOLE
GT	GAS TANK	TR	TRAFFIC MARKER SIGN
GV	GAS VAULT	TR	TRAFFIC CAMERA
GV	GAS VALVE	TR	TRAFFIC SENSOR
GW	GAS WELL	TR	TRAFFIC SIGNAL
HT	TELEPHONE BOX	TR	TRAFFIC VAULT
TH	TELEPHONE HANDHOLE	UB	UNIDENTIFIED BOX
TM	TELEPHONE MANHOLE	UM	UNIDENTIFIED MANHOLE
TMF	TELEPHONE MARKER FLAG	UM	UNIDENTIFIED MARKER FLAG
TMV	TELEPHONE VAULT	UM	UNIDENTIFIED MARKER SIGN
PR	PIPELINE BOX	UP	UNIDENTIFIED POLE
PH	PIPELINE HANDHOLE	UT	UNIDENTIFIED VAULT
PM	PIPELINE METER	UV	UNIDENTIFIED VALVE
PMF	PIPELINE MARKER FLAG	Y	TREE
PMV	PIPELINE MARKER SIGN	WB	WATER BOX
PV	PIPELINE VAULT	WC	WATER CONNECTION
PV	PIPELINE VALVE	WH	WATER HAND HOLE
EB	ELECTRIC BOX	WH	WATER METER
FL	FLOOD LIGHT	WH	WATER MARKER SIGN
GA	GUY ANCHOR	WH	WATER VAULT
GA	GUY ANCHOR POLE	WH	WATER VALVE
EM	ELECTRIC MANHOLE	WH	AIR RELEASE VALVE
EM	ELECTRIC METER	WW	WATER WELL
EM	ELECTRIC MANHOLE	WW	WATER VAULT
EMF	ELECTRIC MARKER FLAG	WW	WATER VALVE
EMS </td <td>ELECTRIC MARKER SIGN</td> <td>WS</td> <td>WATER RELEASE VALVE</td>	ELECTRIC MARKER SIGN	WS	WATER RELEASE VALVE
U	UTILITY POLE	W	WATER WELL
ES	ELECTRIC SWITCH	IRSC	8 1/2" IRON ROD W/ WAX CAP SET
ET	ELECTRIC TRANSFORMER	IRFC	IRON ROD WITH CAP FOUND
EV	ELECTRIC VAULT	PKS	PK NAIL SET
HP	HANDICAPPED PARKING	PNF	PK NAIL FOUND
PM	PARKING METER	RF	IRON ROD FOUND
RR	RAILROAD BOX	XS	"X" CUT IN CONCRETE SET
RH	RAILROAD HANDHOLE	XF	"X" CUT IN CONCRETE FOUND
RS	RAILROAD SIGNAL	P.O.B.	POINT OF BEGINNING
RS	RAILROAD SIGN	P.O.C.	POINT OF COMMENCING
RV	RAILROAD VAULT		
SB	SIGN		
MB	MARQUEE/BILLBOARD		
AC	AC UNIT		
BS	BASKET BALL GOAL		
BL	BORE LOCATION		
FP	FLAG POLE		
DR	DEAL POST		
GT	GREASE TRAP		
IV	IRRIGATION VALVE		



BENCH MARK LIST

BM#1	TXDOT CONTROL POINT NO. E0430313 BEING A 2-INCH ALUMINUM DISK STAMPED "TXDOT DALLAS GPS E0430313" FOUND IN CONCRETE, ±51 FEET WEST OF STATE HIGHWAY 5 AT FANNIN ROAD. ELEV=661.43
BM#2	TXDOT CONTROL POINT NO. E0430261 BEING A 4-INCH ALUMINUM DISK FOUND IN THE GRASS ±54 FEET NORTH FROM NORTHEAST CORNER OF BIBLE CHURCH SIGN, ±73 FEET SOUTHEAST FROM TELEPHONE PEDESTAL, ±90.5 FEET SOUTH FROM CR 377/1375 SIGN AND ±241 FEET NORTH FROM THE CENTER OF COUNTY ROAD 375. ELEV=762.64
BM#3	SQUARE CUT WITH "X" CUT SET ON NORTHEAST CORNER OF CONCRETE HEADWALL LOCATED ±13 FEET WEST OF GREENVILLE DRIVE AND ±1290 FEET NORTH OF STACY ROAD. ELEV=644.21
BM#4	BENCH TIE NAIL SET IN NORTH SIDE OF POWER POLE LOCATED ±16 FEET WEST OF GREENVILLE DRIVE AND ±54 FEET NORTH OF STACY ROAD. ELEV=673.51
BM#5	SQUARE CUT ON NORTHEAST CORNER OF CURB INLET ON THE NORTH SIDE OF FRISCO ROAD, ±430 FEET WEST OF THE INTERSECTION OF FRISCO ROAD AND GREENVILLE DRIVE, ±755 FEET EAST OF INTERSECTION OF FRISCO ROAD AND MEDICAL CENTER DRIVE. ELEV=632.28
BM#6	SQUARE CUT ON BACK OF CURB INLET ON THE SOUTHWEST SIDE OF CENTRAL EXPRESSWAY, ±75 FEET NORTHEAST OF THE INTERSECTION OF CENTRAL EXPRESSWAY AND FRISCO ROAD. ELEV=660.64
BM#7	SQUARE CUT ON SOUTH CORNER OF CURB INLET ON THE SOUTHWEST SIDE OF FAIRVIEW PARKWAY, ±320 FEET SOUTHWEST FROM THE INTERSECTION OF FAIRVIEW PARKWAY AND RIDGEVIEW DRIVE. ELEV=642.22

NOTES:

All bearings shown are based on grid north of the Texas Coordinate System of 1983, North Central Zone (4202), North American Datum of 1983. All dimensions shown are ground distances.

The property is shown on Map No. 48085C0270J, Community Panel No. 481069 0270 J, dated June 2, 2009 of the National Flood Insurance Program Map, Flood Insurance Rate Map of Collin County, Texas, Federal Emergency Management Agency, Federal Insurance Administration.

The surveyor did not abstract the surveyed property. This survey was performed without the benefit of a current title abstract.

TOPOGRAPHIC SURVEY
 PROPOSED FAIRVIEW PARKWAY NORTH
 CITY OF FAIRVIEW, COLLIN COUNTY, TEXAS

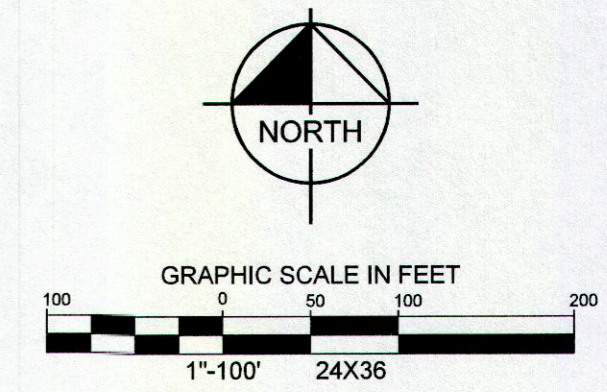
Kimley»Horn

12750 Merit Drive, Suite 1000 Dallas, Texas 75251	FIRM # 10115500	Tel. No. (972) 770-1300 Fax No. (972) 239-3820
Scale 1" = 100'	Drawn by JAD	Checked by DAB
Date OCT. 2015	Project No. 061182003	Sheet No. 2 OF 4

PH DIXON SURVEY
TRACT No. 275

LEGEND

RD	ROOF DRAIN	MB	MAIL BOX
TV	CABLE TV BOX	NS	NEWS STAND
CH	CABLE TV HANDHOLE	PH	PHONE BOOTH
TM	CABLE TV MANHOLE	SC	SECURITY CAMERA
CF	CABLE TV MARKER FLAG	TR	TRASH BIN
CS	CABLE TV MARKER SIGN	SB	SANITARY SEWER BOX
TV	CABLE TV VAULT	OC	SANITARY SEWER CLEAN OUT
CB	COMMUNICATIONS BOX	SH	SANITARY SEWER HANDHOLE
CC	COMMUNICATIONS HANDHOLE	LS	SANITARY SEWER LIFT STATION
CM	COMMUNICATIONS MARKER FLAG	SM	SANITARY SEWER METER
CS	COMMUNICATIONS MARKER SIGN	SH	SANITARY SEWER HANDHOLE
CV	COMMUNICATIONS VAULT	SM	SANITARY SEWER MARKER SIGN
EB	ELEVATION BENCHMARK	ST	SANITARY SEWER SEPTIC TANK
FD	FLOW DIRECTION	SV	SANITARY SEWER VAULT
FB	FIBER OPTIC BOX	SD	STORM SEWER BOX
FO	FIBER OPTIC HANDHOLE	SD	STORM SEWER DRAIN
FM	FIBER OPTIC MARKER FLAG	SH	STORM SEWER HANDHOLE
FS	FIBER OPTIC MARKER SIGN	SM	STORM SEWER METER
FT	FIBER OPTIC VAULT	SH	STORM SEWER HANDHOLE
MW	MONITORING WELL	SM	STORM SEWER MARKER SIGN
FT	FUEL TANK	SV	STORM SEWER VAULT
GB	GAS BOX	TR	TRAFFIC BARRIER
GH	GAS HANDHOLE	TR	TRAFFIC COLLARD
GM	GAS METER	TR	TRAFFIC BOX
GC	GAS MANHOLE	CS	CROSS WALK SIGNAL
GF	GAS MARKER FLAG	TH	TRAFFIC HANDHOLE
GS	GAS SIGN	TM	TRAFFIC MANHOLE
GT	GAS TANK	TR	TRAFFIC MARKER SIGN
GV	GAS VAULT	TC	TRAFFIC CAMERA
GV	GAS VALVE	TS	TRAFFIC SENSOR
GW	GAS WELL	TR	TRAFFIC SIGNAL
TB	TELEPHONE BOX	TV	TRAFFIC VAULT
TD	TELEPHONE HANDHOLE	UB	UNIDENTIFIED BOX
TE	TELEPHONE MANHOLE	UH	UNIDENTIFIED HANDHOLE
TF	TELEPHONE MARKER FLAG	UM	UNIDENTIFIED METER
TS	TELEPHONE MARKER SIGN	UO	UNIDENTIFIED MANHOLE
TV	TELEPHONE VAULT	UM	UNIDENTIFIED MARKER SIGN
PB	PIPELINE BOX	UP	UNIDENTIFIED POLE
PH	PIPELINE HANDHOLE	UT	UNIDENTIFIED TANK
PM	PIPELINE METER	UV	UNIDENTIFIED VAULT
PD	PIPELINE MANHOLE	UV	UNIDENTIFIED VALVE
PE	PIPELINE MARKER FLAG	TR	TREE
PF	PIPELINE MARKER SIGN	WB	WATER BOX
PT	PIPELINE VAULT	WD	WATER DEPT. CONNECTION
PV	PIPELINE VALVE	WH	WATER HAND HOLE
EB	ELECTRIC BOX	WH	WATER HYDRANT
EL	FLOOD LIGHT	WM	WATER METER
EA	GUY ANCHOR	WW	WATER MANHOLE
EP	GUY ANCHOR POLE	WM	WATER MARKER FLAG
EM	ELECTRIC MANHOLE	WM	WATER MARKER SIGN
EL	LIGHT STANDARD	WT	WATER TANK
EM	ELECTRIC METER	WV	WATER VALVE
EV	ELECTRIC MANHOLE	WV	WATER VAULT
EM	ELECTRIC MARKER FLAG	WR	WATER WELL
ES	ELECTRIC MARKER SIGN	WR	WATER WELL
UP	UTILITY POLE	WR	WATER WELL
ES	ELECTRIC SWITCH	WR	WATER WELL
ET	ELECTRIC TRANSFORMER	WR	WATER WELL
EV	ELECTRIC VAULT	WR	WATER WELL
HP	HANDICAPPED PARKING	WR	WATER WELL
RM	RANKING METER	WR	WATER WELL
RR	RAILROAD BOX	WR	WATER WELL
RH	RAILROAD HANDHOLE	WR	WATER WELL
RS	RAILROAD SIGNAL	WR	WATER WELL
RT	RAILROAD SIGN	WR	WATER WELL
RV	RAILROAD VAULT	WR	WATER WELL
SB	SIGN	WR	WATER WELL
MB	MARQUEE/BILLBOARD	WR	WATER WELL
AC	A/C UNIT	WR	WATER WELL
BS	BASKET BALL GOAL	WR	WATER WELL
BL	BORE LOCATION	WR	WATER WELL
FL	FLAG POLE	WR	WATER WELL
CP	CORN POLE	WR	WATER WELL
GT	GREASE TRAP	WR	WATER WELL
IV	IRRIGATION VALVE	WR	WATER WELL



BENCH MARK LIST

- BM#1 TXDOT CONTROL POINT NO. E0430313 BEING A 2-INCH ALUMINUM DISK STAMPED "TXDOT DALLAS GPS E0430313" FOUND IN CONCRETE, ±51 FEET WEST OF STATE HIGHWAY 5 AT FANNIN ROAD.
ELEV=661.43
- BM#2 TXDOT CONTROL POINT NO. E0430261 BEING A 4-INCH ALUMINUM DISK FOUND IN THE GRASS ±54 FEET NORTH FROM NORTHEAST CORNER OF BIBLE CHURCH SIGN, ±73 FEET SOUTHEAST FROM TELEPHONE PEDESTAL, ±90.5 FEET SOUTH FROM CR 377/1375 SIGN AND ±241 FEET NORTH FROM THE CENTER OF COUNTY ROAD 375.
ELEV=762.64
- BM#3 SQUARE CUT WITH "X" CUT SET ON NORTHEAST CORNER OF CONCRETE HEADWALL LOCATED ±13 FEET WEST OF GREENVILLE DRIVE AND ±1290 FEET NORTH OF STACY ROAD.
ELEV=644.21
- BM#4 BENCH TIE NAIL SET IN NORTH SIDE OF POWER POLE LOCATED ±16 FEET WEST OF GREENVILLE DRIVE AND ±54 FEET NORTH OF STACY ROAD.
ELEV=673.51
- BM#5 SQUARE CUT ON NORTHEAST CORNER OF CURB INLET ON THE NORTH SIDE OF FRISCO ROAD, ±430 FEET WEST OF THE INTERSECTION OF FRISCO ROAD AND GREENVILLE DRIVE, ±755 FEET EAST OF INTERSECTION OF FRISCO ROAD AND MEDICAL CENTER DRIVE.
ELEV=632.28
- BM#6 SQUARE CUT ON BACK OF CURB INLET ON THE SOUTHEAST SIDE OF CENTRAL EXPRESSWAY, ±75 FEET NORTHEAST OF THE INTERSECTION OF CENTRAL EXPRESSWAY AND FRISCO ROAD.
ELEV=660.64
- BM#7 SQUARE CUT ON SOUTH CORNER OF CURB INLET ON THE SOUTHEAST SIDE OF FAIRVIEW PARKWAY, ±320 FEET SOUTHWEST FROM THE INTERSECTION OF FAIRVIEW PARKWAY AND RIDGEVIEW DRIVE.
ELEV=642.22

NOTES:

All bearings shown are based on grid north of the Texas Coordinate System of 1983, North Central Zone (4202), North American Datum of 1983. All dimensions shown are ground distances.

The property is shown on Map No. 48085C0270J, Community Panel No. 481069 0270 J, dated June 2, 2009 of the National Flood Insurance Program Map, Flood Insurance Rate Map of Collin County, Texas, Federal Emergency Management Agency, Federal Insurance Administration.

The surveyor did not abstract the surveyed property. This survey was performed without the benefit of a current title abstract.

TOPOGRAPHIC SURVEY
PROPOSED FAIRVIEW PARKWAY NORTH
CITY OF FAIRVIEW, COLLIN COUNTY, TEXAS

Kimley»Horn

12750 Merit Drive, Suite 1000 Dallas, Texas 75251 FIRM # 10115500 Tel. No. (972) 770-1300 Fax No. (972) 239-3820

Scale	Drawn by	Checked by	Date	Project No.	Sheet No.
1" = 100'	JAD	DAB	OCT. 2015	061182003	3 OF 4