

## CONSULTANTS

**Civil / Landscape**  
**KIMLEY-HORN**  
Tom Coppin  
13455 Noel Rd - Suite 700  
Dallas, TX 75240  
PH: 916.792.1759

**Structural Engineer**  
**BLISS & NYITRAY**  
Adam Phelps  
10440 N. Central Expressway  
Suite 1530  
Dallas, TX 75231  
PH: 214.326.7206

**Mechanical - Electrical - Plumbing Engineering**  
**WSP**  
Anthony Pirano  
3102 Oak Lawn Ave - Suite 450  
Dallas, TX 75219  
PH: 469.859.4768

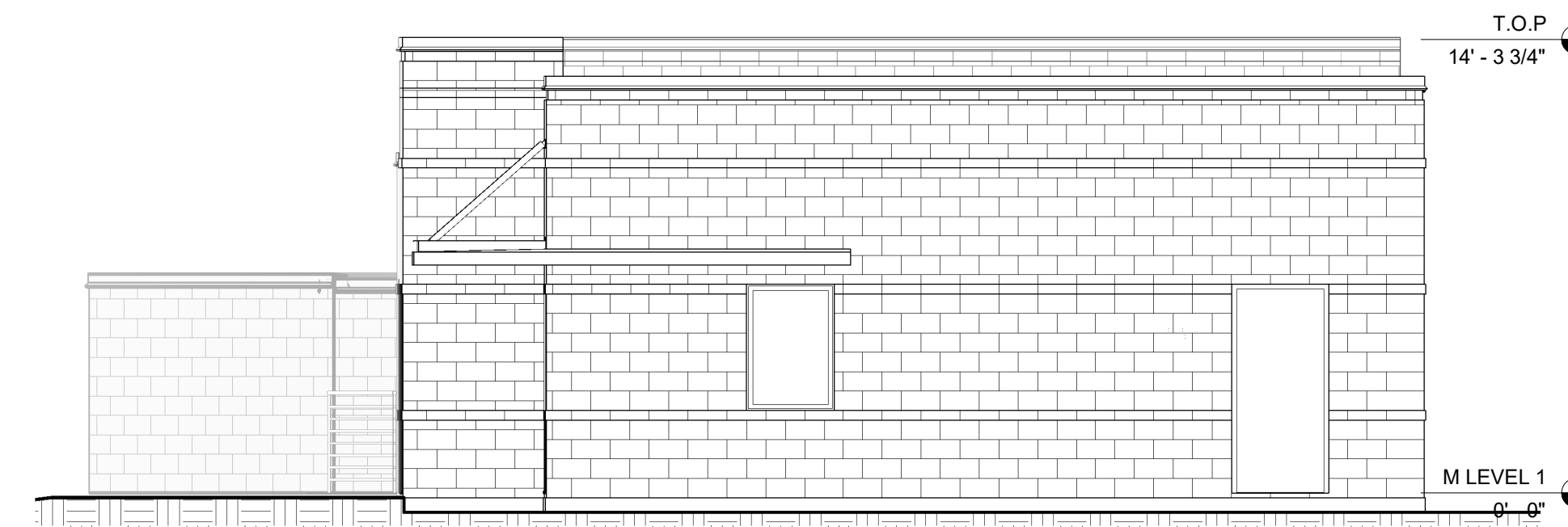
**Lighting Design**  
**OLDER LIGHTING, LLC**  
Scott Oldner  
4645 Greenville Ave - Studio B  
Dallas, TX 75206  
PH: 214.280.7653

**Acoustical & Low Voltage Design**  
**WJHW**  
Greg Hughes  
3424 Midcourt Rd - Suite 124  
Carrollton, TX 75006  
PH: 469.321.5330

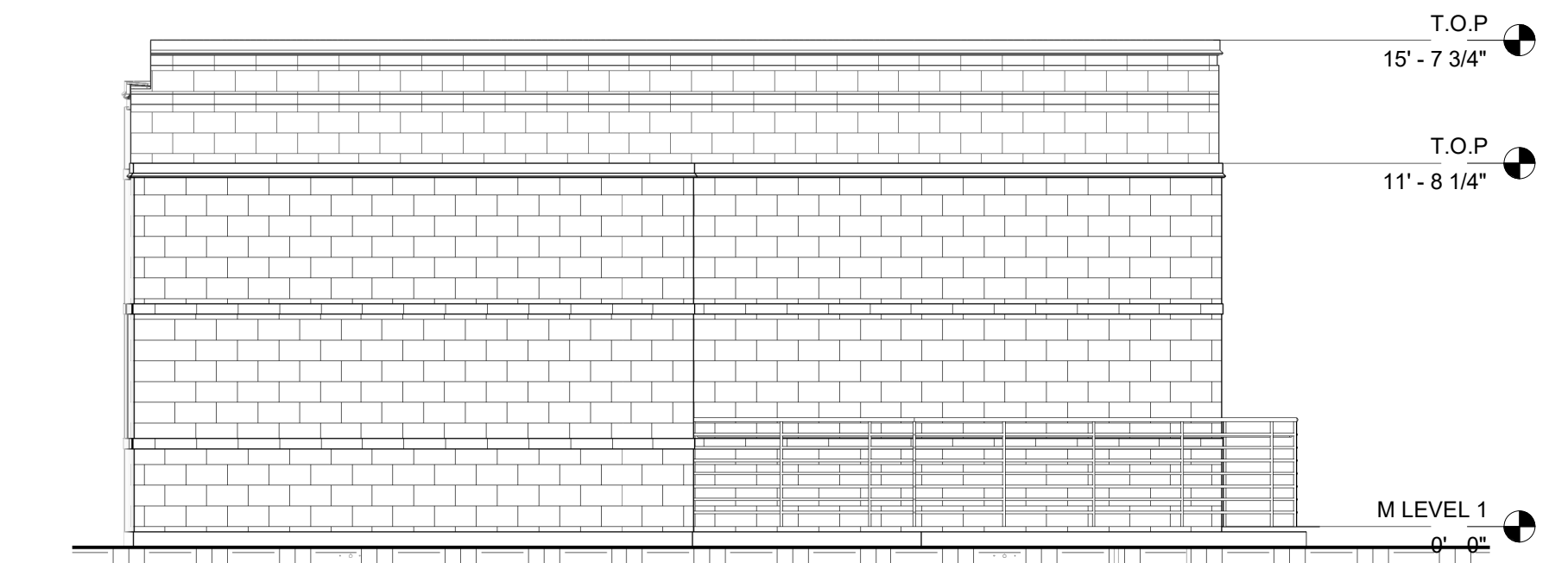
**Fire Suppression Engineer**  
**REED FIRE PROTECTION**  
Albert Reed  
14651 Dallas Pkwy - Suite 816  
Dallas, TX 75254  
PH: 214.543.7368

## MCKINNEY TEXAS TEMPLE

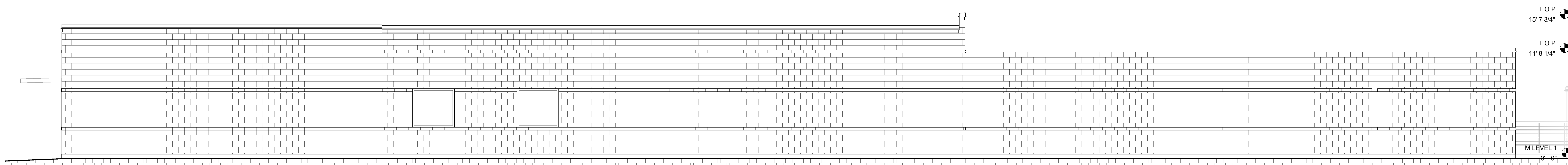
STACY ROAD, FAIRVIEW TEXAS



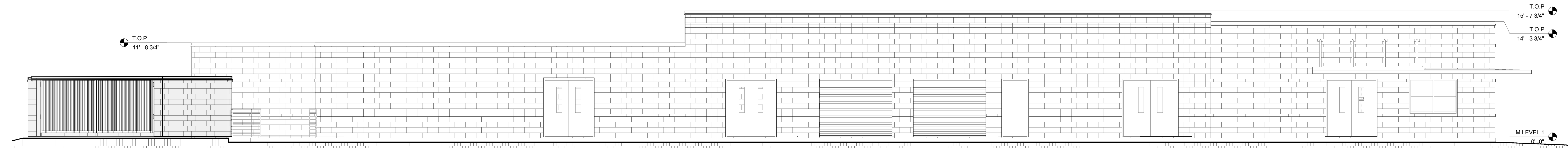
**4 GROUNDS & DIST. SOUTH ELEVATION**  
3/16" = 1'-0"



**3 GROUNDS & DIST. NORTH ELEVATION**  
3/16" = 1'-0"



**2 GROUNDS & DIST. EAST ELEVATION**  
3/16" = 1'-0"



**1 GROUNDS & DIST. WEST ELEVATION**  
3/16" = 1'-0"

No. | Date

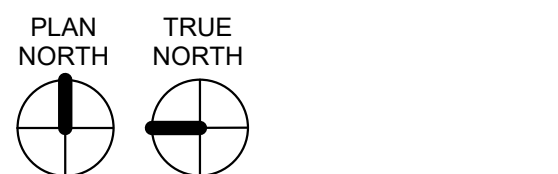
### Revisions

|             |          |   |
|-------------|----------|---|
| Project No. | 22336.00 | <b>DISCLAIMER</b><br>These documents have been prepared under the direct supervision of Robert Genter, TX Registration No. 22105 and are NOT intended for regulatory approval, bidding, permitting, or construction purposes. |
| Drawn       | km       |   |
| Plotted     | jt       |   |
| Checked     | kt       |   |

|         |          |
|---------|----------|
| Checked | Approved |
|---------|----------|

Key:

**M1 M2**



### DESIGN DEVELOPMENT

Title:  
**GROUNDS & MAINTENANCE BUILDING - EXTERIOR ELEVATIONS**  
Scale: 3/16" = 1'-0"

Drawing No.  
**300**

Issue Date  
APRIL 26, 2024

Autodesk Docs://22336.00 - McKinney Temple/22336\_TEMPLE INTERIOR\_V24.rvt  
5/1/2024 6:00:38 PM  
MCKINNEY TEXAS TEMPLE